

**STANDARD DEPARTURE CHART -  
INSTRUMENT (SID) - ICAO**

TRANSITION ALTITUDE  
11000 FT

APP : 125.4  
TWR : 119.75 , 236.6  
ATIS : 128.275

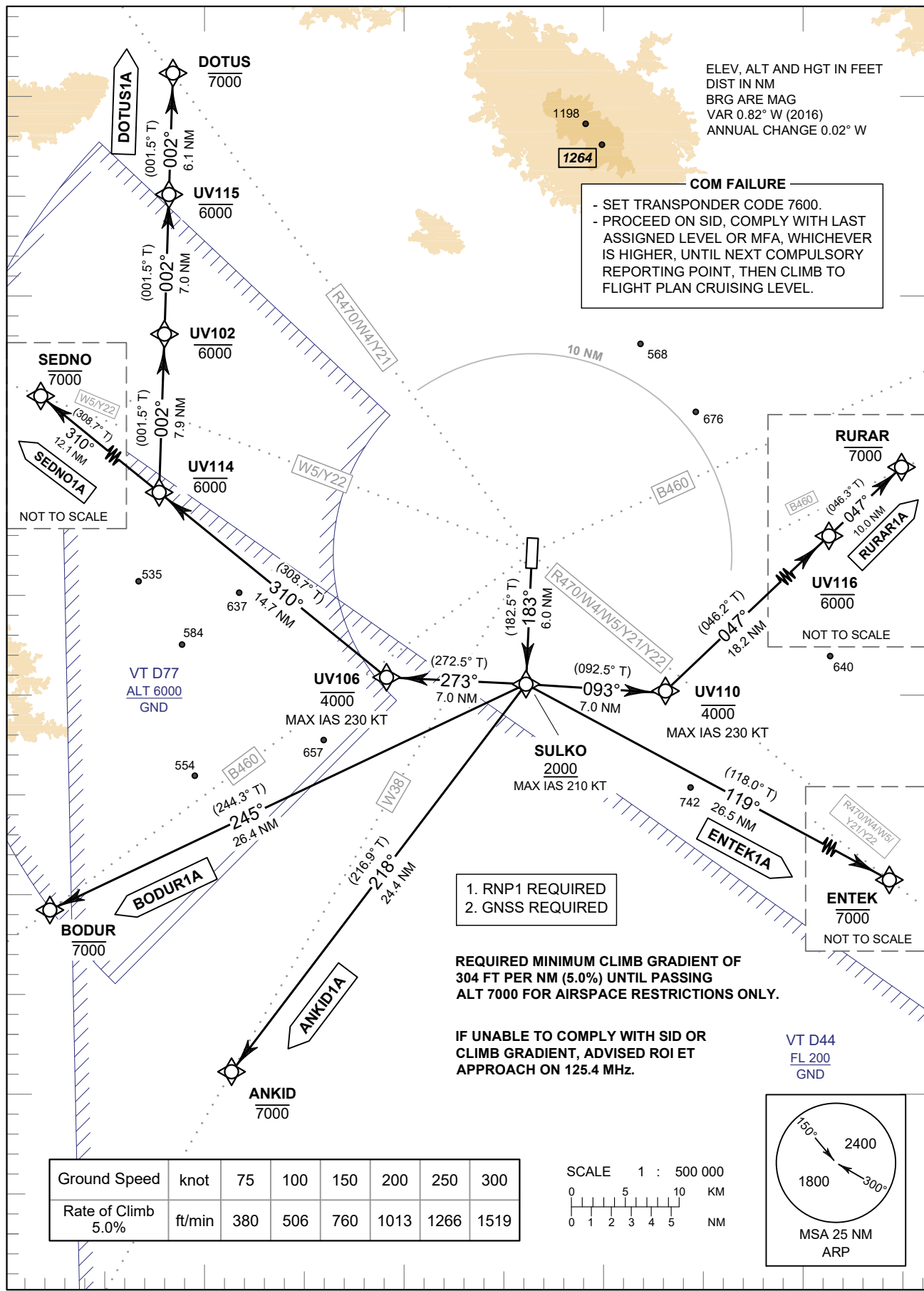
**ROI ET / Roi Et (VTUV)  
RNAV RWY18**

ANKID1A BODUR1A DOTUS1A  
ENTEK1A RURAR1A SEDNO1A

ELEV, ALT AND HGT IN FEET  
DIST IN NM  
BRG ARE MAG  
VAR 0.82° W (2016)  
ANNUAL CHANGE 0.02° W

**COM FAILURE**

- SET TRANSPONDER CODE 7600.
- PROCEED ON SID, COMPLY WITH LAST ASSIGNED LEVEL OR MFA, WHICHEVER IS HIGHER, UNTIL NEXT COMPULSORY REPORTING POINT, THEN CLIMB TO FLIGHT PLAN CRUISING LEVEL.



NOT TO SCALE

NOT TO SCALE

NOT TO SCALE

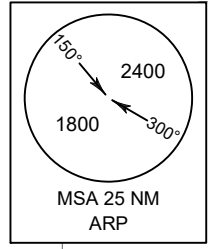
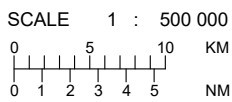
NOT TO SCALE

1. RNP1 REQUIRED
2. GNSS REQUIRED

**REQUIRED MINIMUM CLIMB GRADIENT OF  
304 FT PER NM (5.0%) UNTIL PASSING  
ALT 7000 FOR AIRSPACE RESTRICTIONS ONLY.**

**IF UNABLE TO COMPLY WITH SID OR  
CLIMB GRADIENT, ADVISED ROI ET  
APPROACH ON 125.4 MHz.**

Ground Speed	knot	75	100	150	200	250	300
Rate of Climb 5.0%	ft/min	380	506	760	1013	1266	1519



CHANGE: ROUTE Y21, Y22 ADDED.