

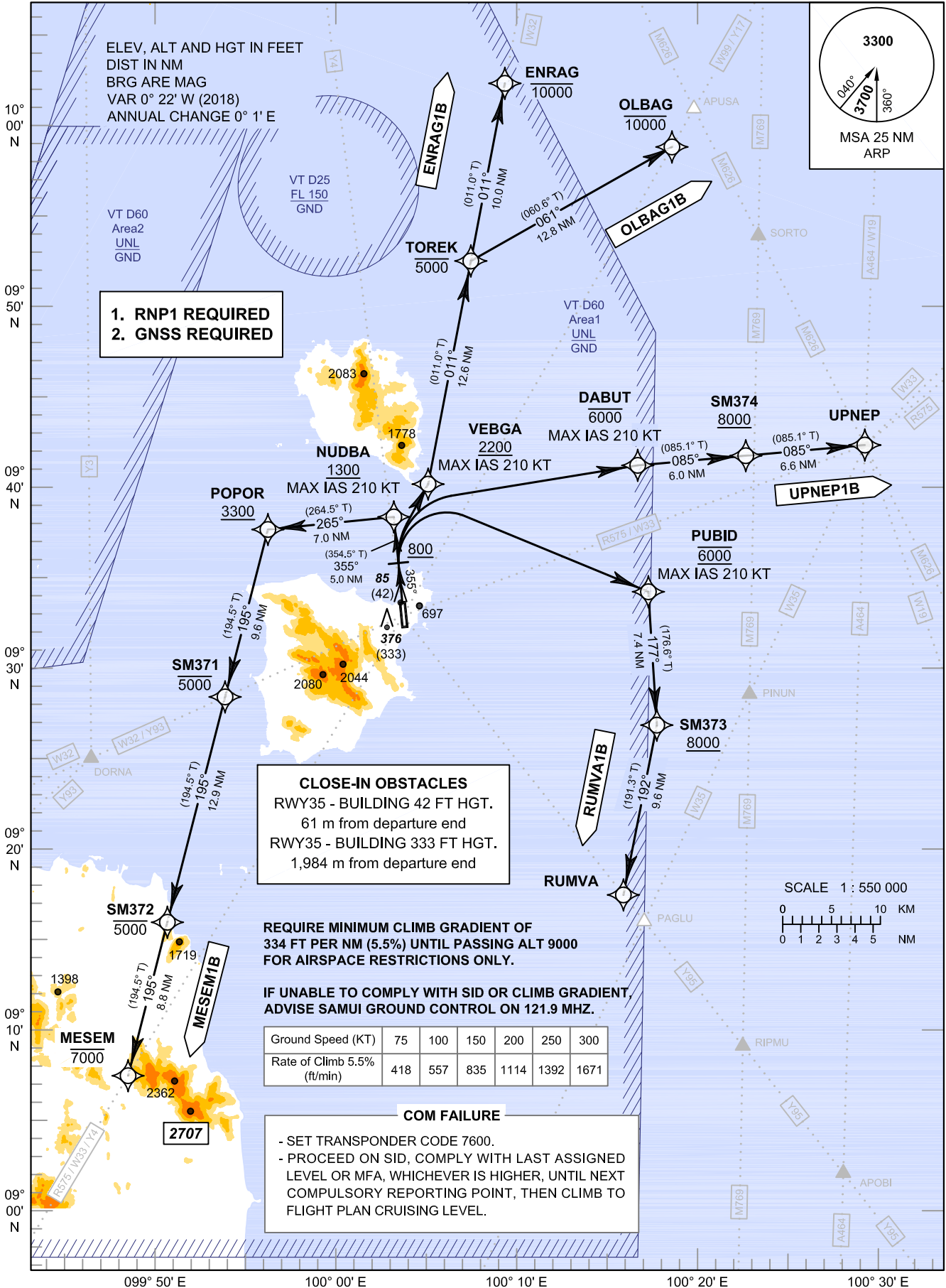
**STANDARD DEPARTURE CHART -
INSTRUMENT (SID) - ICAO**

TRANSITION ALTITUDE
11000 FT

APP : 129.6
TWR : 118.9
GND : 121.9
ATIS : 128.6

**SURAT THANI / Samui (VTSM)
RNAV RWY35**

ENRAG1B MESEM1B
OLBAG1B RUMVA1B UPNEP1B



CHANGE: NEW CHART.