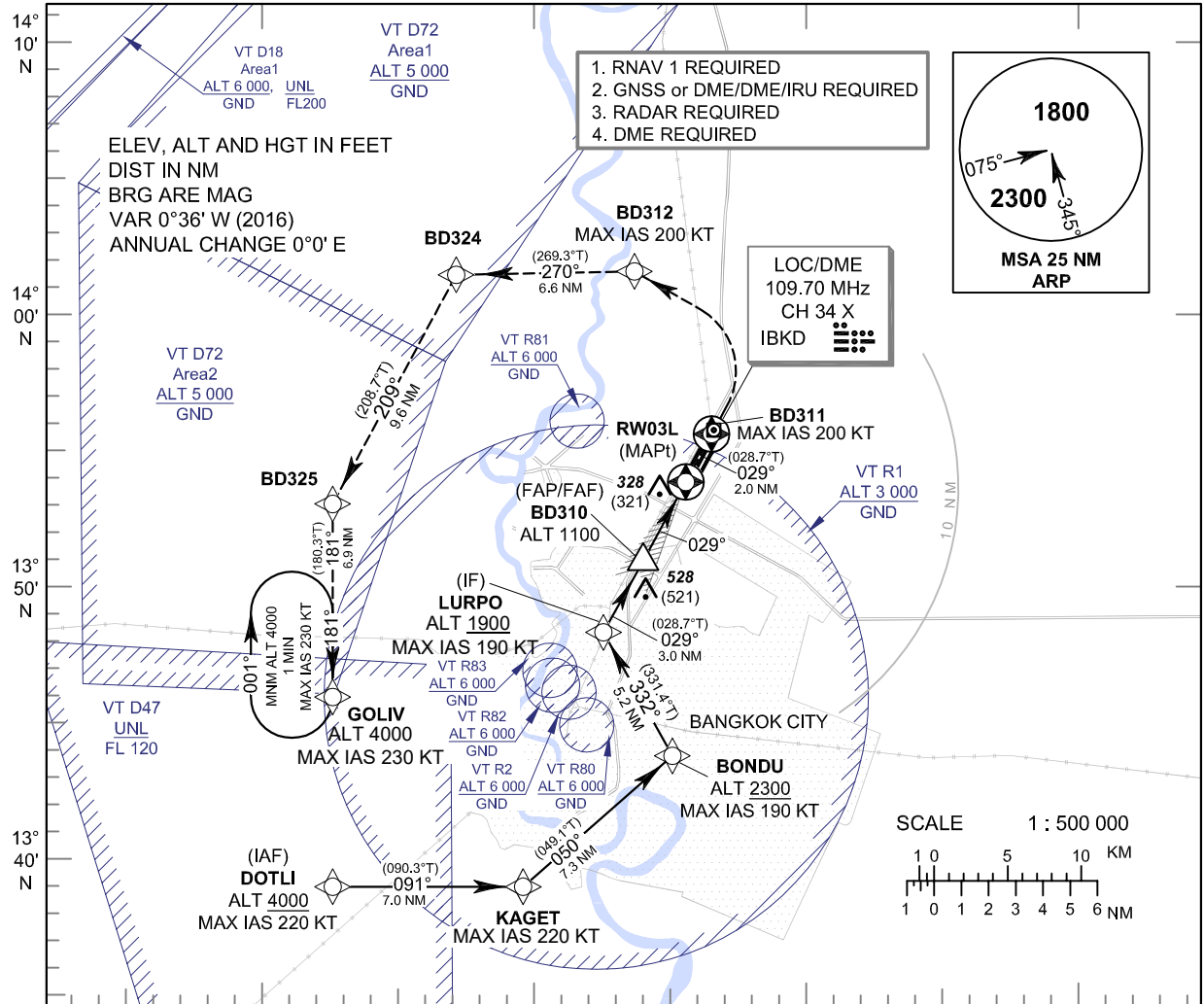


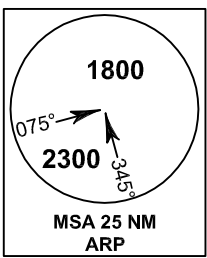
INSTRUMENT APPROACH CHART - ICAO **AERODROME ELEV 9 FT**
HEIGHTS RELATED TO THR RWY03L - ELEV 7 FT

APP	: 119.1, 262.5
	: 119.4, 262.5
	: 120.3, 262.5
	: 128.95, 262.5
	: 122.35, 262.5
	: 124.35, 262.5
	: 125.2, 262.5
DAR	: 133.0, 262.5
TWR	: 118.1, 236.6
ATIS	: 126.4, 344.6

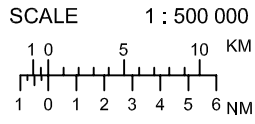
BANGKOK / Don Mueang Intl (VTBD)
ILS or LOC z RWY03L



1. RNAV 1 REQUIRED
2. GNSS or DME/DME/IRU REQUIRED
3. RADAR REQUIRED
4. DME REQUIRED



LOC/DME
 109.70 MHz
 CH 34 X
 IBKD



		(IF) LURPO 1900 (1893)				(FAP/FAF) BD310 1100 (1093)				(MAPt) LOC only RW03L				MISSED APPROACH : No turn before MAPt. Speed restricted to MAX IAS 200 KT until BD312 Climb and maintain 3000 ft. Track 029° to BD311, then turn left direct to BD324, then to BD325. At BD324 proceed to BD325 climbing up to 4000ft, then to GOLIV and hold or as directed by ATC.			
		RDH 55 FT				1100				LOC/DME							
		TA 11000				GP 3.0° (5.2%)											
		ELEV 7 FT (THR RWY03L)				410											
		8.5		5.5		3.3		2.2		0		0		DME FM LOC/DME			
		6.3		3.3		1.1		0		0		0		NM FM THR			
CHANGE: INTERMEDIATE ALT.	OCA/H		A	B	C	D	GS OUT	Distance (IBKD)		FAF		4 D		3.2 D			
	Straight - in Approach		CAT I					220 (213)		Altitude (Height)		1100 (1093)		660 (653)		410 (403)	
	LOC only		410 (403)					Ground speed		knot		70		90		100 120 140 160	
	Circling (OCH AAL)		800 (791)		1100 (1091)			Rate of descent (5.2%)		ft/min		369		474		527 632 737 843	