

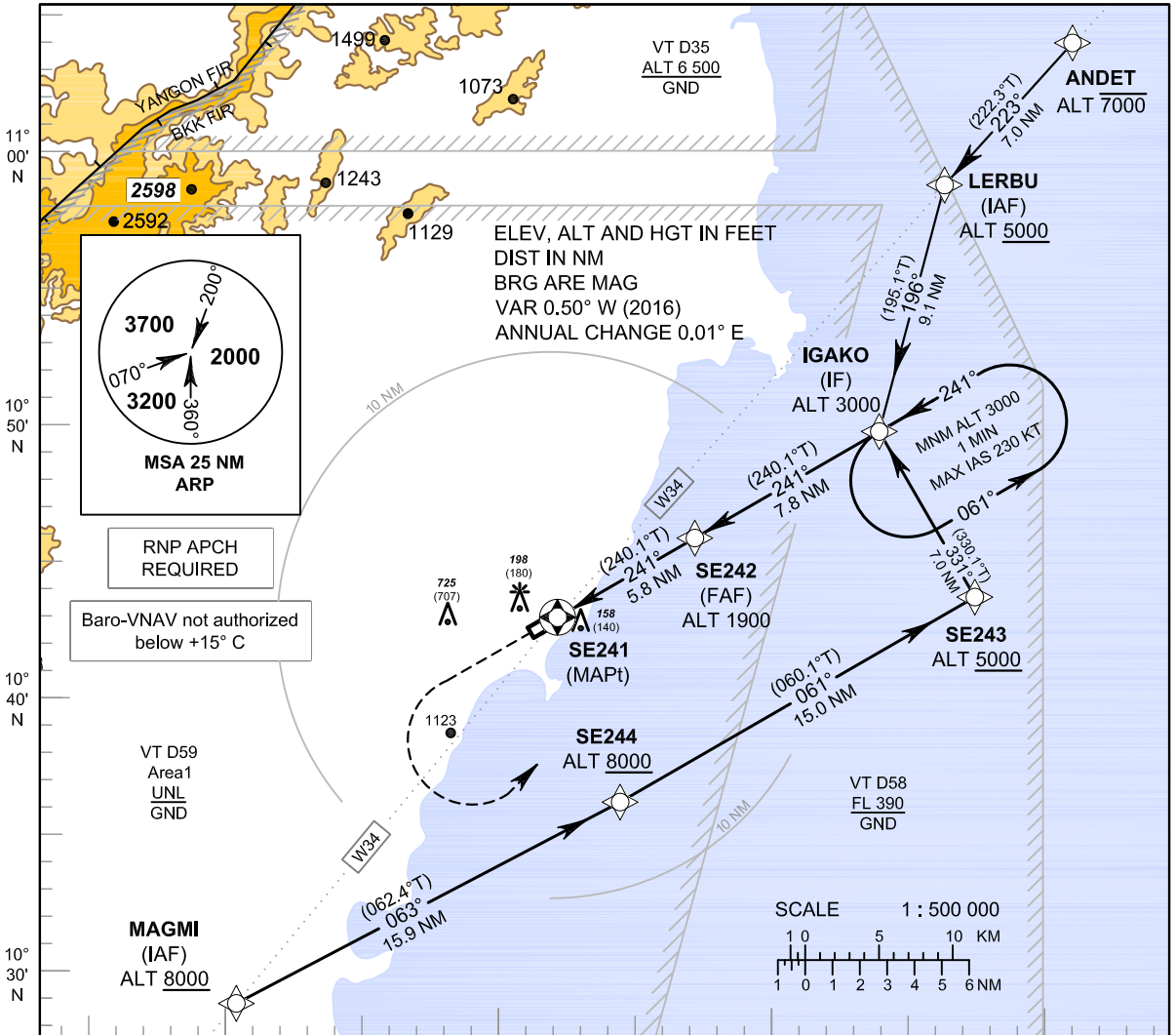
**INSTRUMENT
APPROACH
CHART - ICAO**

AERODROME ELEV 18 FT
HEIGHTS RELATED TO
AERODROME ELEV

APP : 122.6
TWR : 122.15 , 236.6
ATIS : 128.45

CHUMPHON / Chumphon (VTSE)

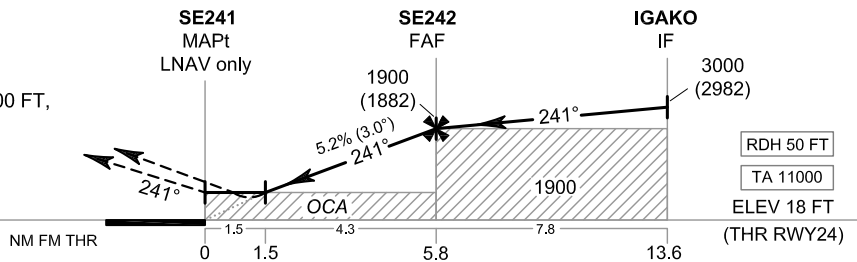
RNP RWY24



MISSED APPROACH :

No turn before MAPt.

Climb on track 241° to 1500 FT,
then turn left direct to IF
at 3000 FT and hold or
as directed by ATC.



CHANGE : ATIS FREQUENCY ADDED.

| OCA/H | A | B | C | D | NM to NEXT WPT | 1.5 NM | 2 NM | 3 NM | 4 NM | 5 NM | FAF | | |
|--------------------|-------------|---|---|---|------------------------|-----------|-----------|------------|-------------|-------------|-------------|-----|-----|
| LNAV/VNAV | 400 (382) | | | | Altitude (Height) | 540 (522) | 700 (682) | 1015 (997) | 1330 (1312) | 1650 (1632) | 1900 (1882) | | |
| LNAV | 540 (522) | | | | Ground speed | knot | | 70 | 90 | 100 | 120 | 140 | 160 |
| Circling (OCH AAL) | 1500 (1482) | | | | Rate of descent (5.2%) | ft/min | | 369 | 474 | 527 | 632 | 737 | 843 |