

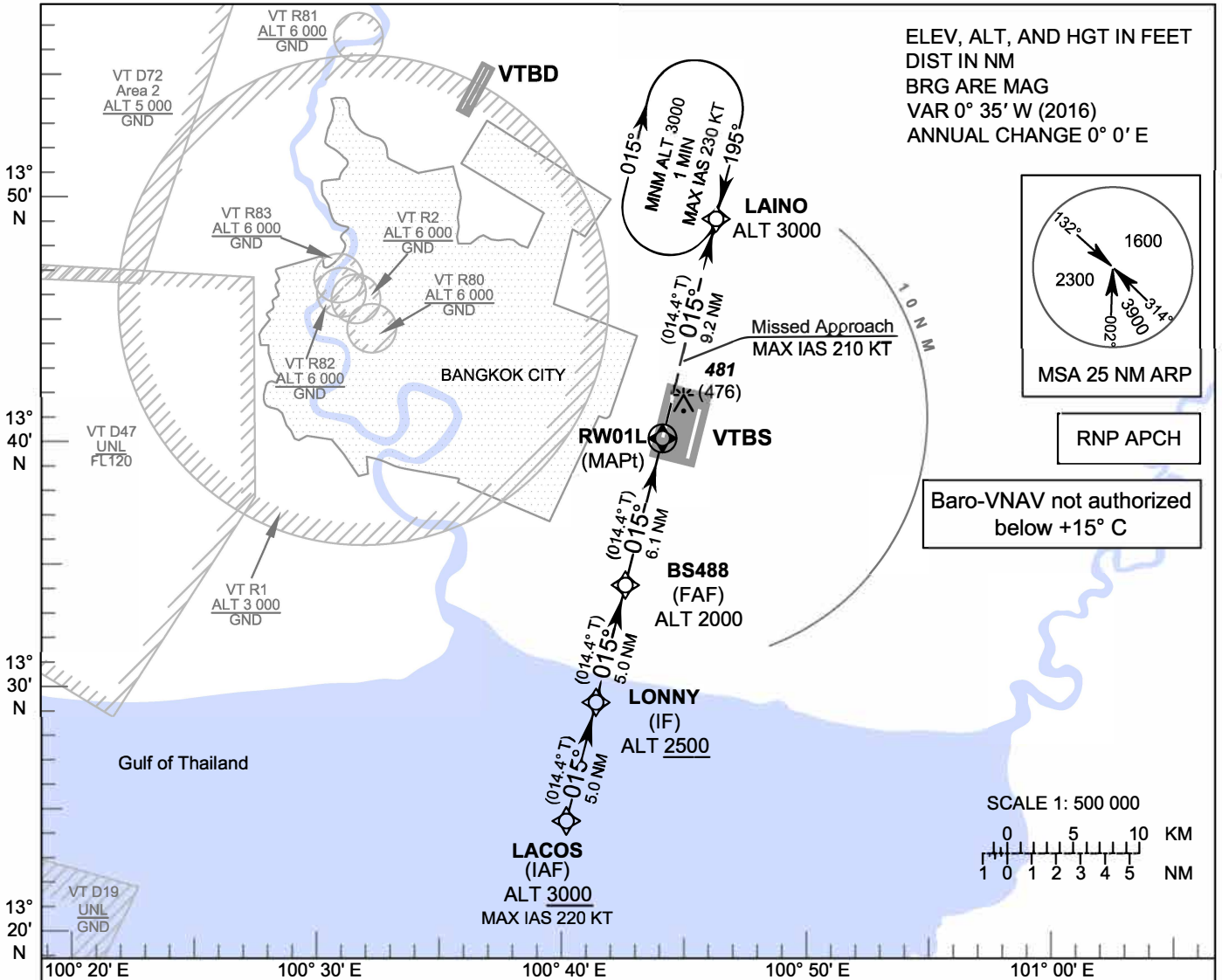
**INSTRUMENT
APPROACH
CHART - ICAO**

**AERODROME ELEV 5 FT
HEIGHTS RELATED TO
THR RWY01L - ELEV 5 FT**

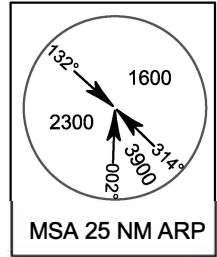
APP	: 119.1, 262.5
	: 120.3, 262.5
	: 128.95, 262.5
	: 122.35, 262.5
	: 124.35, 262.5
	: 125.2, 262.5
ARR	: 121.1
	: 126.3
TWR	: 118.2, 274.5
	: 119.0
ARR ATIS	: 133.6, 278.6

BANGKOK / Suvarnabhumi Intl (VTBS)

RNP RWY01L

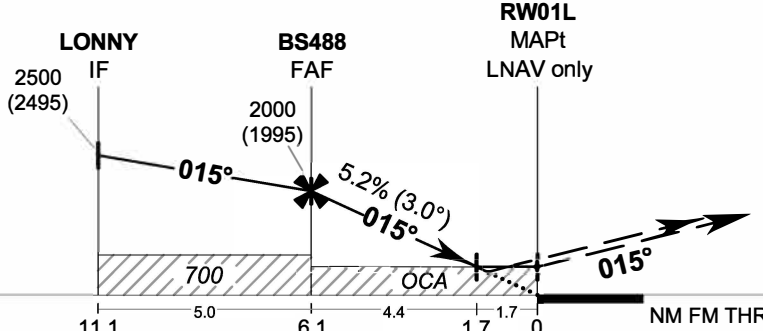
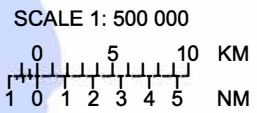


ELEV, ALT, AND HGT IN FEET
DIST IN NM
BRG ARE MAG
VAR 0° 35' W (2016)
ANNUAL CHANGE 0° 0' E



RNP APCH

Baro-VNAV not authorized
below +15° C



MISSED APPROACH:
No turn before MAPt.
Speed restricted to
MAX IAS 210 KT.
Climb to 3000 FT on course 015°
to LAINO and hold or as
directed by ATC.
(If unable to reach 3000 FT
at LAINO, continue climb
in the holding pattern.)

RDH 50 FT
TA 11000
ELEV 5 FT
(THR RWY01L)

OCA/H	A	B	C	D	NM to NEXT WPT	FAF	6 NM	5 NM	4 NM	3 NM	2 NM	1.7 NM
LNAV / VNAV	400 (395)				Altitude (Height)	2000 (1995)	1950 (1945)	1635 (1630)	1320 (1315)	1005 (1000)	690 (685)	600 (595)
LNAV	600 (595)				Ground speed	knot	70	90	100	120	140	160
Circling (OCH AAL)	800 (795)		900 (895)		Rate of descent FAF-MAPt 5.2%	ft/min	369	474	527	632	737	843

CHANGE: CHART TITLE.