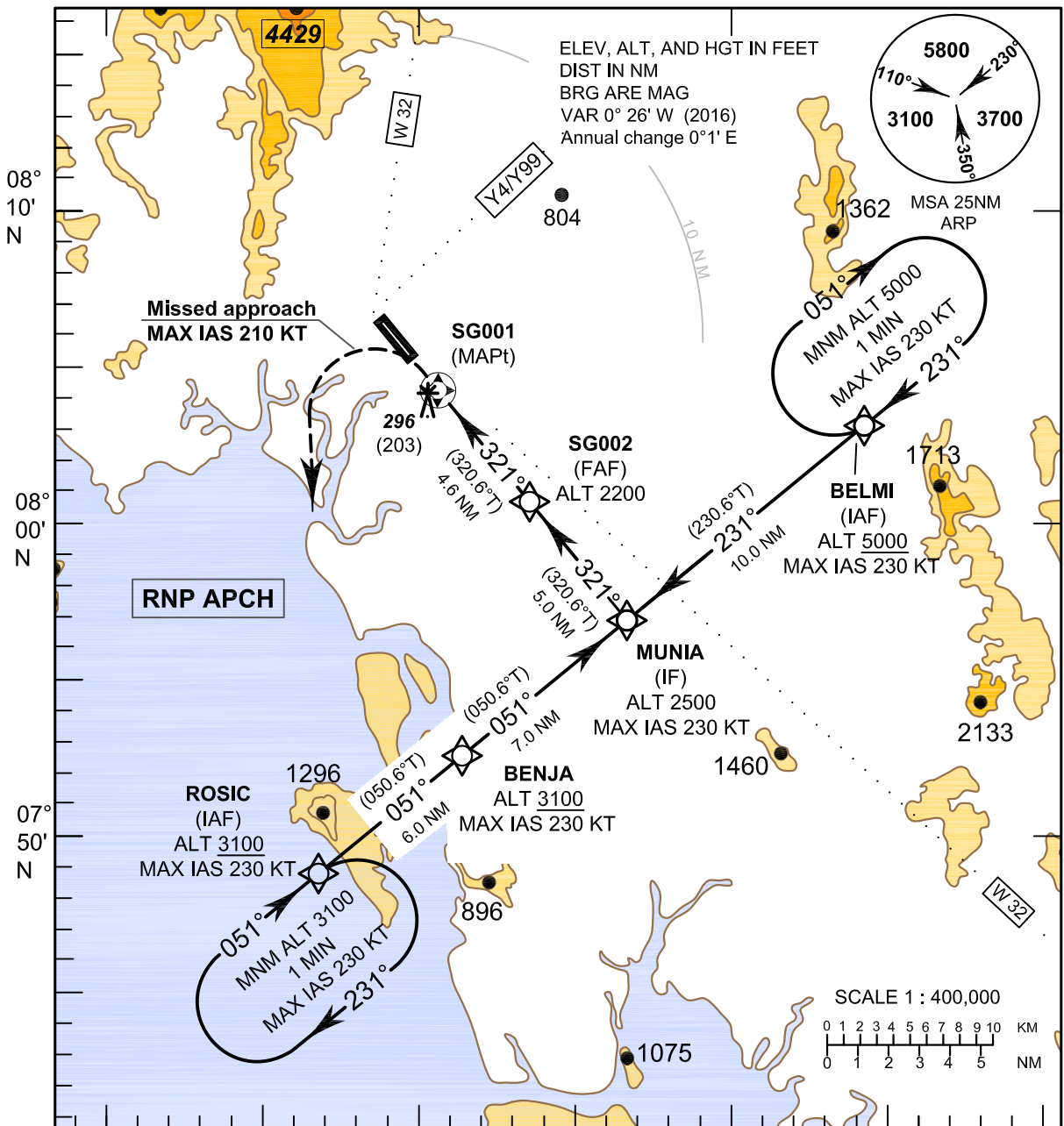


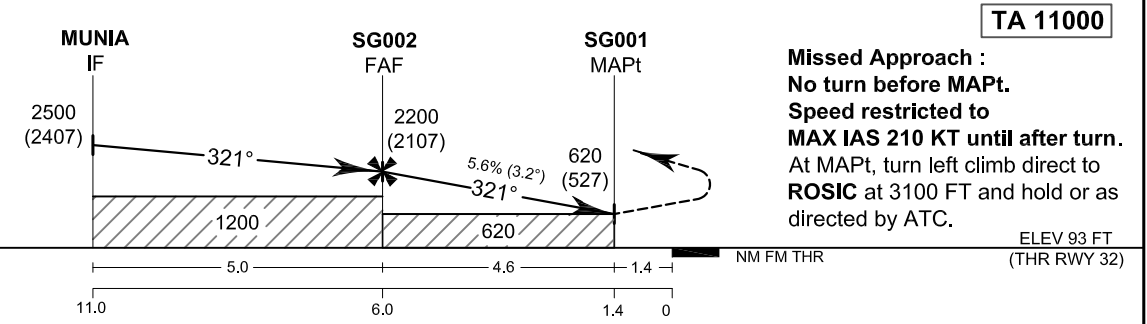
INSTRUMENT AERODROME ELEV 93 FT
APPROACH HEIGHTS RELATED TO
CHART-ICAO AERODROME ELEV

APP : 120.05
 TWR : 122.5, 236.6
 GND : 121.9
 ATIS : 132.4

KRABI/Krabi (VTSG)
RNP RWY32



08° 10' N
 08° 00' N
 07° 50' N
 098° 50' E 099° 00' E 099° 10' E 099° 20' E



Missed Approach :
No turn before MAPt.
Speed restricted to
MAX IAS 210 KT until after turn.
 At MAPt, turn left climb direct to **ROSIC** at 3100 FT and hold or as directed by ATC.

ELEV 93 FT
 (THR RWY 32)

OCA/H	A	B	C	D	NM to NEXT WPT	FAF	5 NM	4 NM	3 NM	2 NM	1.4 NM
	620 (527)				Altitude (Height)	2200 (2107)	1845 (1752)	1505 (1412)	1165 (1072)	825 (732)	620 (527)
LNAV	620 (527)				Ground Speed	knot	70	90	100	120	140
Circling (OCH AAL)	Not Authorized				Rate of descent FAF-MAPt 5.6%	ft/min	397	510	567	681	794

CHANGE: TWR FREQUENCY, GND FREQUENCY, ATIS FREQUENCY, CHART TITLE.