

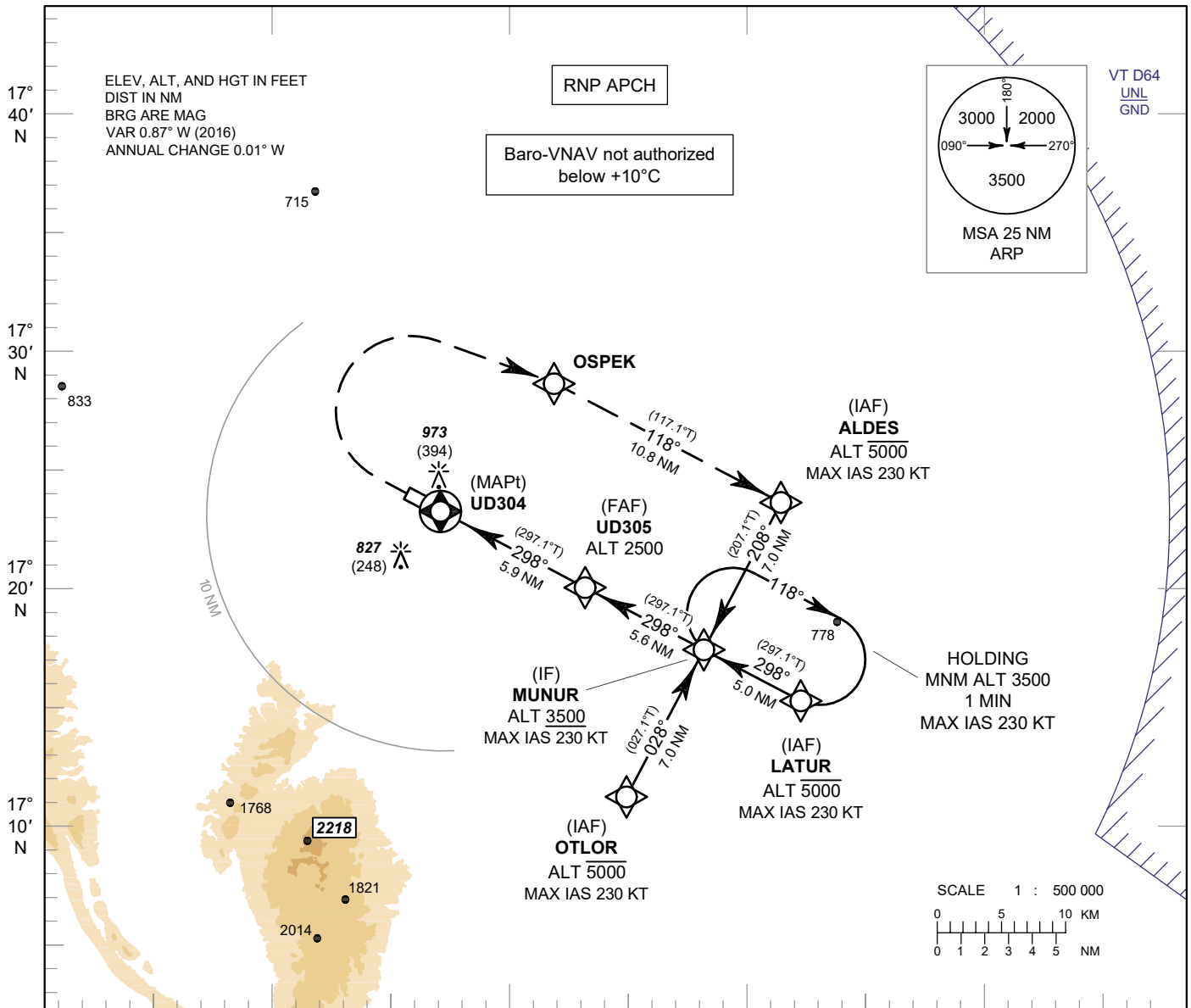
**INSTRUMENT
APPROACH
CHART - ICAO**

AERODROME ELEV 579 FT
HEIGHTS RELATED TO
THR RWY30 - ELEV 579 FT

APP : 126.2, 265.9
TWR : 122.5, 355.4
GND : 121.9, 275.8
ATIS : 127.6

UDON THANI / Udon Thani (VTUD)

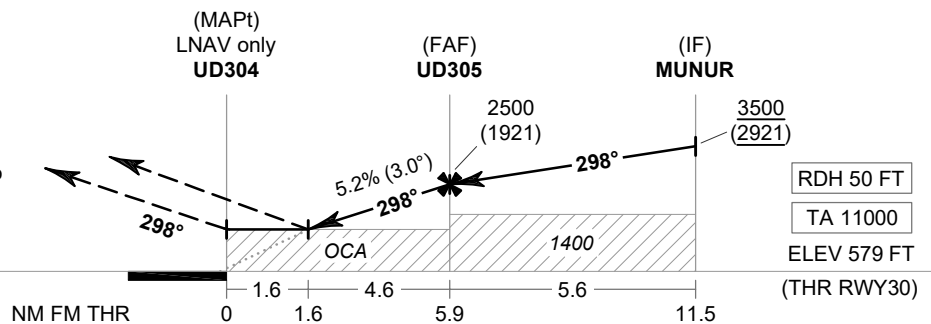
RNP RWY30



MISSED APPROACH :

No turn before MAPt.

Climb on track 298° to 1500 FT,
then turn right direct to OSPEK.
continue to ALDES then proceed to
MUNUR at minimum 3500 FT and
hold or as directed by ATC.



OCA/H	A	B	C	D	NM to NEXT WPT	1.6 NM	2 NM	3 NM	4 NM	5 NM	FAF	
LNAV/VNAV	1140 (561)				Altitude (Height)	1140 (561)	1260 (681)	1575 (996)	1895 (1316)	2210 (1631)	2500 (1921)	
LNAV	1300 (721)				Ground Speed	knot	70	90	100	120	140	160
Circling* (OCH AAL)	1300 (721)				Rate of Descent FAF-MAPt 5.2%	ft/min	369	474	527	632	737	843
*FOR CIRCLING RESTRICTIONS SEE VERSO												

CHANGE : REVISED CHART.