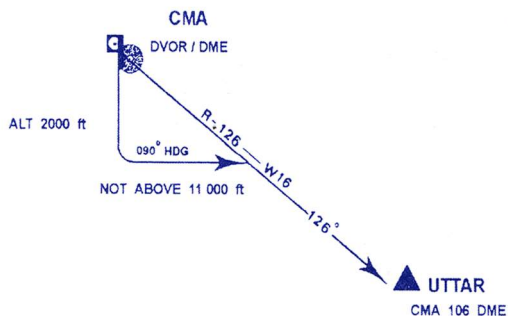


STANDARD INSTRUMENT DEPARTURE RUNWAY 18

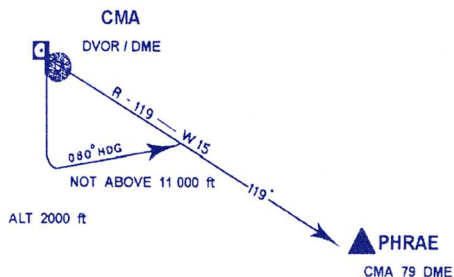
UTTAR ONE ALFA (UTTAR 1 A)

Take off, climb runway heading until 2 000 FT, or above, then turn left heading 090° to intercept and proceed on CMA R-126 not above 11 000 FT.
 Expect radar control.
 Contact Chiang Mai Radar on 129.6, 305.4 MHZ after take-off.



PHRAE ONE ALFA (PR 1 A)

Take off, climb runway heading until 2 000 FT, or above, then turn left heading 080° to intercept and proceed on CMA R-119 not above 11 000 FT.
 Expect radar control.
 Contact Chiang Mai Radar on 129.6, 305.4 MHZ after take-off.



CHIANG RAI ONE ALFA (CTR 1 A)

Take off, climb runway heading until 2 000 FT, or above, then turn left heading 010° to intercept and proceed on CMA R-036 not above 11 000 FT.
 Expect radar control.
 Contact Chiang Mai Radar on 129.6, 305.4 MHZ after take-off.

