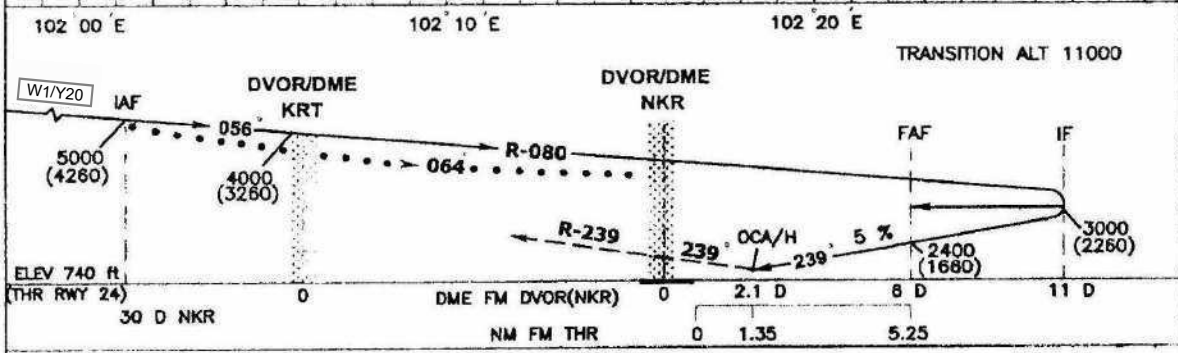
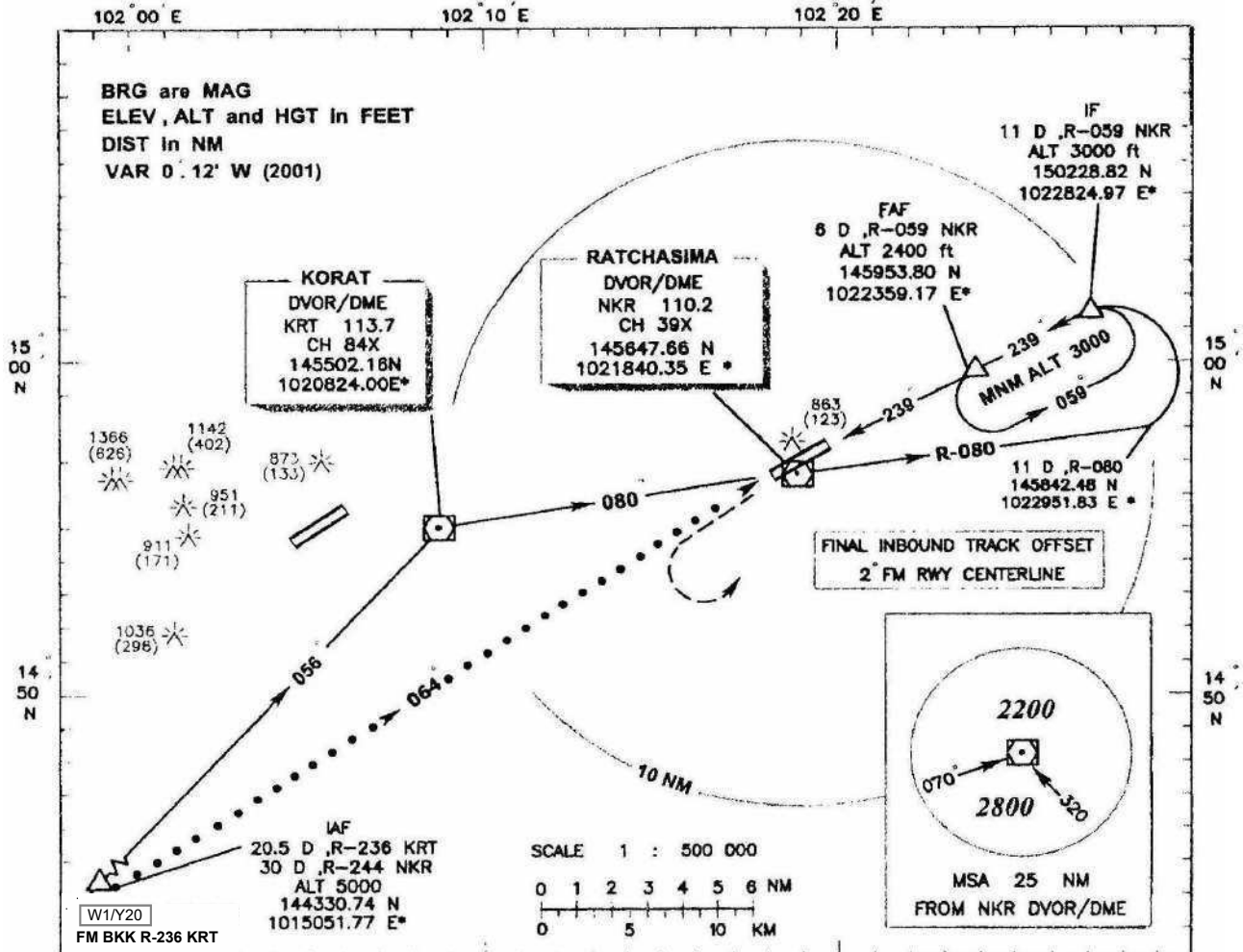


INSTRUMENT AERODROME ELEV 765 ft APP : 123.6 NAKHON RATCHASIMA / Ratchasima
 APPROACH HEIGHTS RELATED TO TWR : 119.8, 236.6 VOR/DME
 CHART - ICAO THR RWY 24 ELEV 740 ft ATIS : 126.6 RWY 24



MISSED APPROACH: Climb on track 239 to the DVOR/DME then climb on R-239 to 2000(1260) ft, then turn left continuing climb back to FAF 3000(2260) ft and hold.

Remark : Circling to the left only

		Distance				2 D	3 D	4 D	5 D
OCA/H	A B C D	Altitude(Height)				1175 (435)	1480 (740)	1780 (1040)	2080 (1340)
Straight-in approach	1200(460)				Gs	knot	100 120 140	160 180	200
Circling	1400(680)	1500(780)		Rate of descent (ft/min)		505	610 710	810 910	1015

CHANGE : ROUTE Y20 ADDED.