

STANDARD DEPARTURE CHART - INSTRUMENT (SID) - ICAO

TRANSITION ALTITUDE
11000 FT

APP : 129.6 , 305.4
TWR : 118.1 , 236.6
GND : 121.9 , 275.8
ATIS : 127.2 , 301.5

CHIANG MAI / Chiang Mai Intl (VTCC)

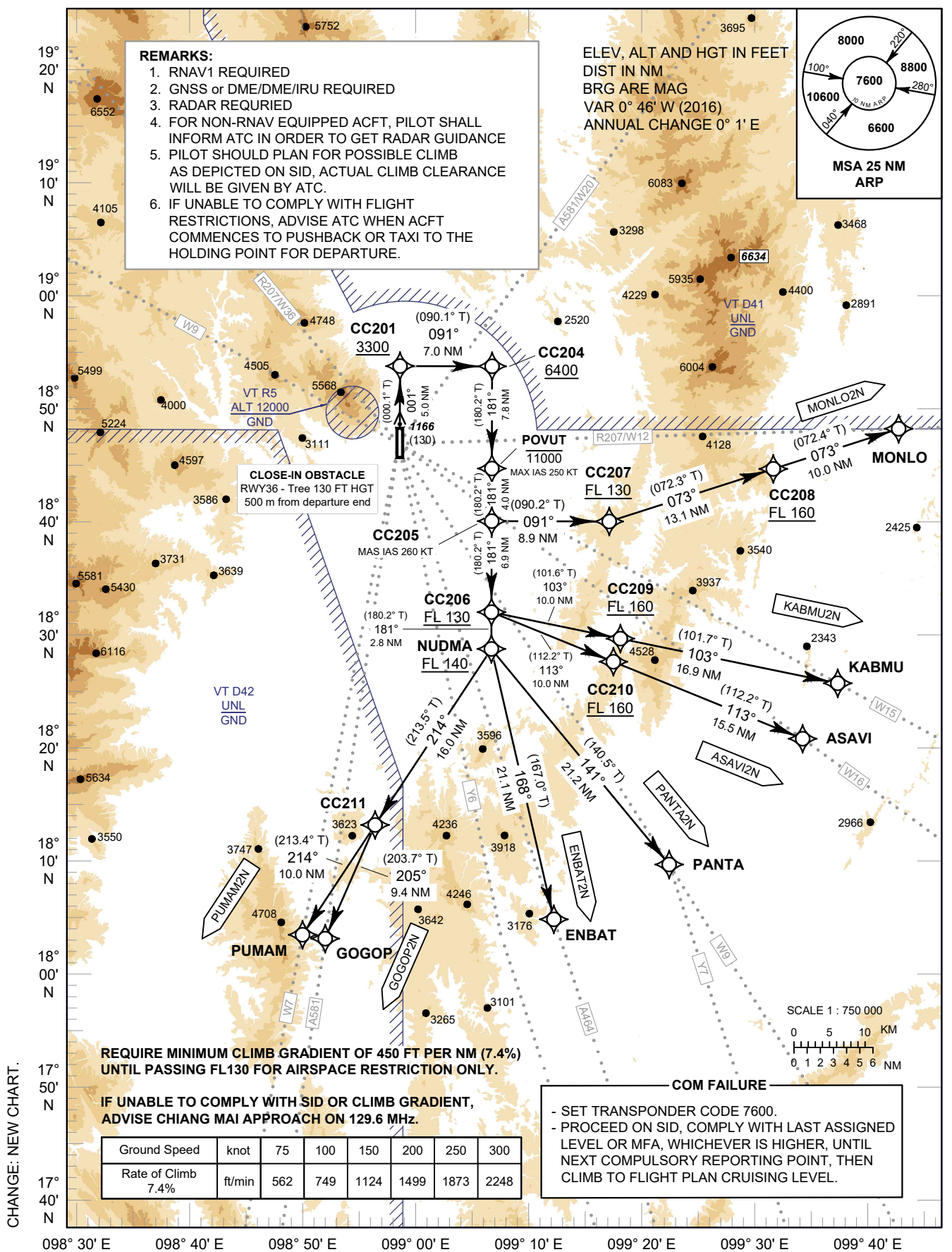
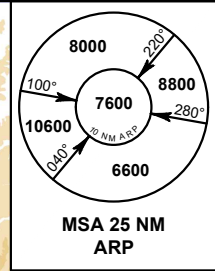
RNAV RWY36

ASAVI2N ENBAT2N GOGOP2N
KABMU2N MONLO2N PANTA2N PUMAM2N

REMARKS:

1. RNAV1 REQUIRED
2. GNSS or DME/DME/IRU REQUIRED
3. RADAR REQUIRED
4. FOR NON-RNAV EQUIPPED ACFT, PILOT SHALL INFORM ATC IN ORDER TO GET RADAR GUIDANCE
5. PILOT SHOULD PLAN FOR POSSIBLE CLIMB AS DEPICTED ON SID, ACTUAL CLIMB CLEARANCE WILL BE GIVEN BY ATC.
6. IF UNABLE TO COMPLY WITH FLIGHT RESTRICTIONS, ADVISE ATC WHEN ACFT COMMENCES TO PUSHBACK OR TAXI TO THE HOLDING POINT FOR DEPARTURE.

ELEV, ALT AND HGT IN FEET
DIST IN NM
BRG ARE MAG
VAR 0° 46' W (2016)
ANNUAL CHANGE 0° 1' E



CLOSE-IN OBSTACLE
RWY36 - Tree 130 FT HGT
500 m from departure end

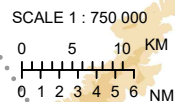
REQUIRE MINIMUM CLIMB GRADIENT OF 450 FT PER NM (7.4%) UNTIL PASSING FL130 FOR AIRSPACE RESTRICTION ONLY.

IF UNABLE TO COMPLY WITH SID OR CLIMB GRADIENT, ADVISE CHIANG MAI APPROACH ON 129.6 MHz.

Ground Speed	knot	75	100	150	200	250	300
Rate of Climb 7.4%	ft/min	562	749	1124	1499	1873	2248

COM FAILURE

- SET TRANSPONDER CODE 7600.
- PROCEED ON SID, COMPLY WITH LAST ASSIGNED LEVEL OR MFA, WHICHEVER IS HIGHER, UNTIL NEXT COMPULSORY REPORTING POINT, THEN CLIMB TO FLIGHT PLAN CRUISING LEVEL.



CHANGE: NEW CHART.