

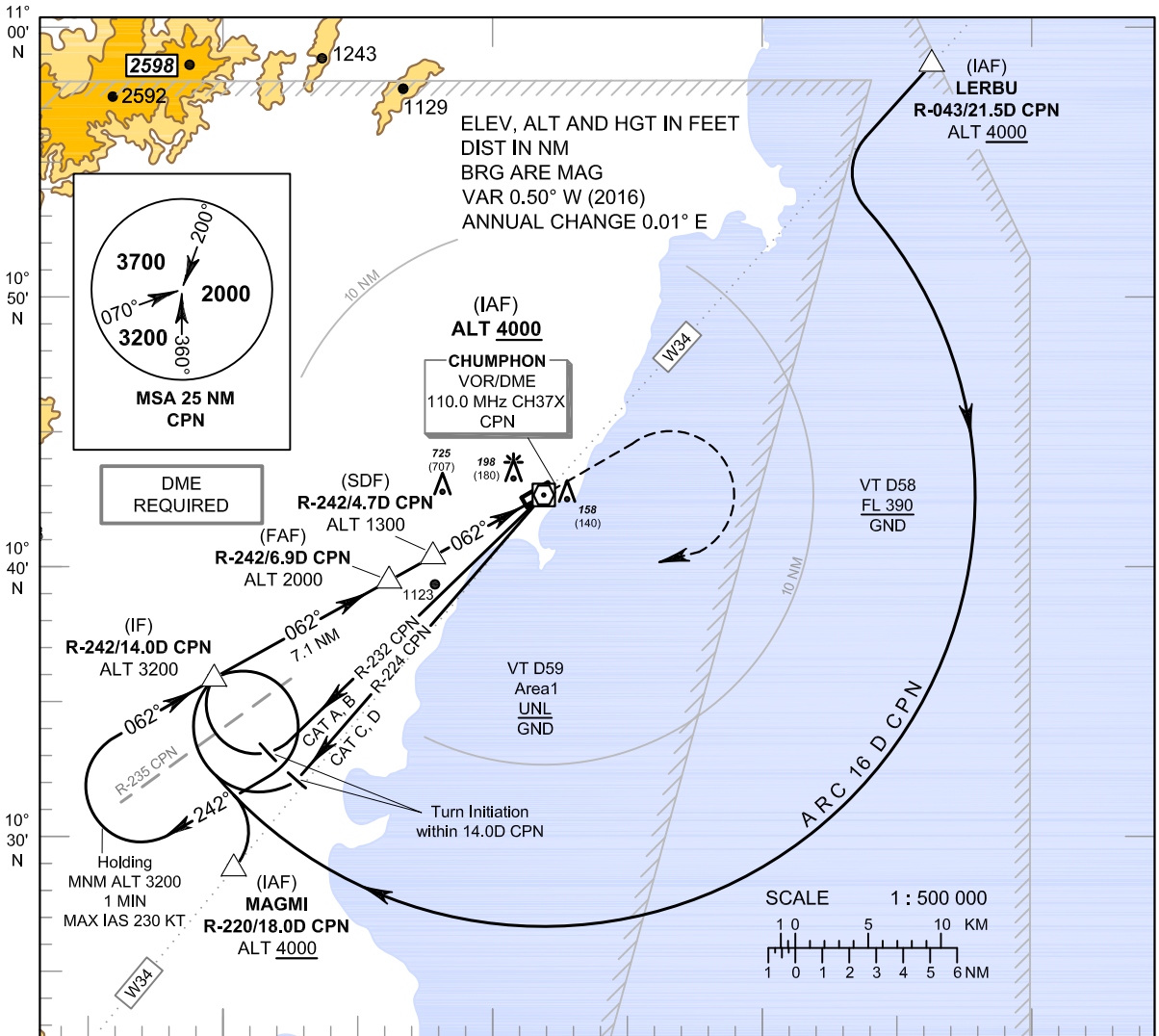
**INSTRUMENT
APPROACH
CHART - ICAO**

AERODROME ELEV 18 FT
HEIGHTS RELATED TO
AERODROME ELEV

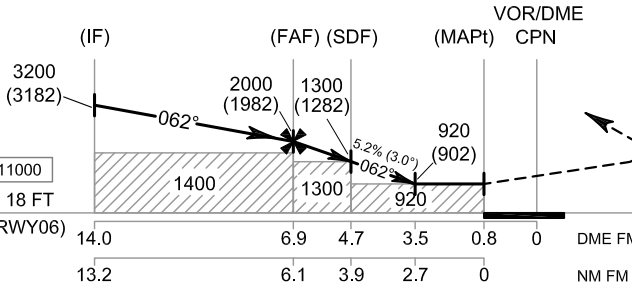
APP : 122.6
TWR : 122.15 , 236.6
ATIS : 128.45

CHUMPHON / Chumphon (VTSE)

VOR RWY06



099° 10' E 099° 20' E 099° 30' E 099° 40' E



MISSED APPROACH :
No turn before MAPt.
Climb on R-242 to CPN VOR, then climb straight ahead to 1500 FT, and turn right to intercept outbound R-242 CPN VOR, then proceed to IF at 3200 FT and hold or as directed by ATC.

CHANGE : ATIS FREQUENCY ADDED.

OCA/H	A	B	C	D	Distance to CPN	FAF	6 D	SDF	4 D	3.5 D
Straight - in Approach	920 (902)				Altitude (Height)	2000 (1982)	1710 (1692)	1300 (1282)	1080 (1062)	920 (902)
					Ground speed	knot	70	90	100	120 140 160
Circling (OCH AAL)	1500 (1482)				Rate of descent (5.2%)	ft/min	369	474	527	632 737 843