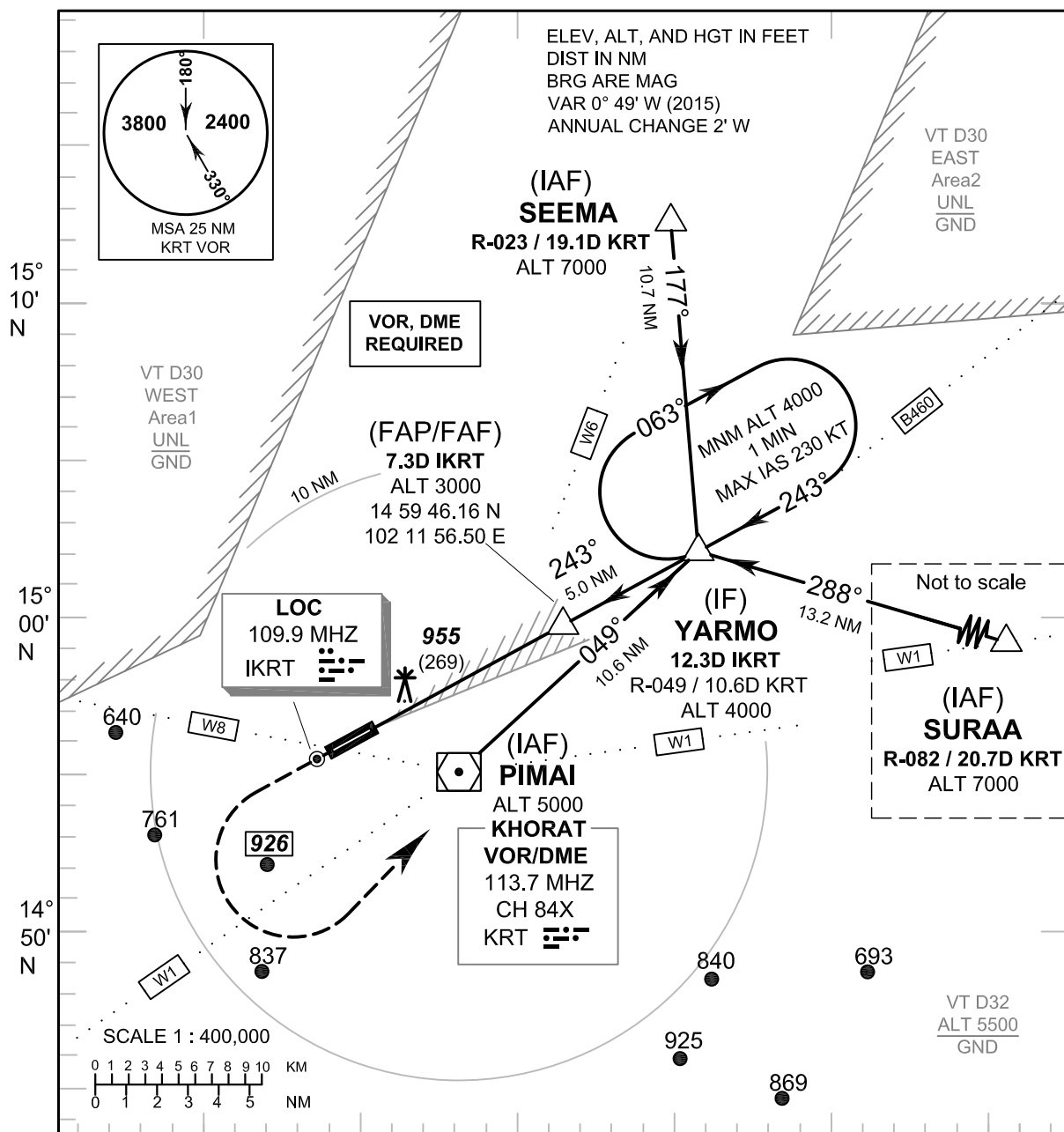


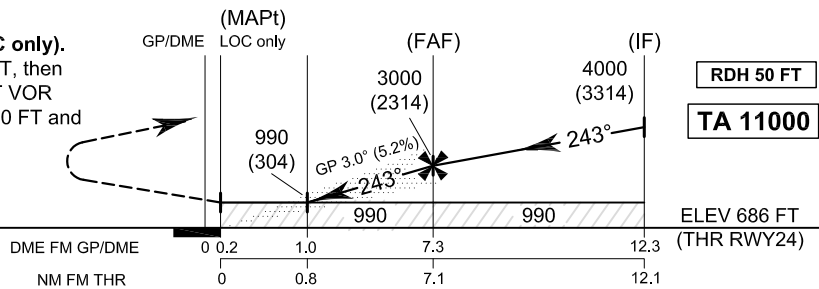
INSTRUMENT AERODROME ELEV 729 FT
APPROACH HEIGHTS RELATED TO
CHART - ICAO THR RWY24 - ELEV 686 FT

APP : 129.75, 349.0
 TWR : 122.2, 240.5
 GND : 121.75, 257.8
 ATIS : 390.6

NAKHON RATCHASIMA /
Khorat (VTUN)
ILS or LOC RWY24



Missed Approach :
No turn before MAPt (for LOC only).
 Climb straight ahead to 2600 FT, then turn left to intercept R-049 KRT VOR and proceed to **YARMO** at 4000 FT and hold or as directed by ATC.



CHANGE: DME REVISED.

OCA/H		A	B	C	D	GS OUT	Distance (IKRT)	1 D	2 D	3 D	4 D	5 D	6 D	FAF
Straight-in Approach	CAT I	900 (214)						Altitude (Height)	990 (304)	1305 (619)	1620 (934)	1935 (1249)	2255 (1569)	2570 (1884)
		900 (304)					Ground Speed	knot	70	90	100	120	140	160
LOC only		900 (304)					Rate of Descent 3.0°	ft/min	372	478	531	637	743	849
Circling (OCH AAL)		1400 (671)		1700 (971)										

MILITARY USE ONLY