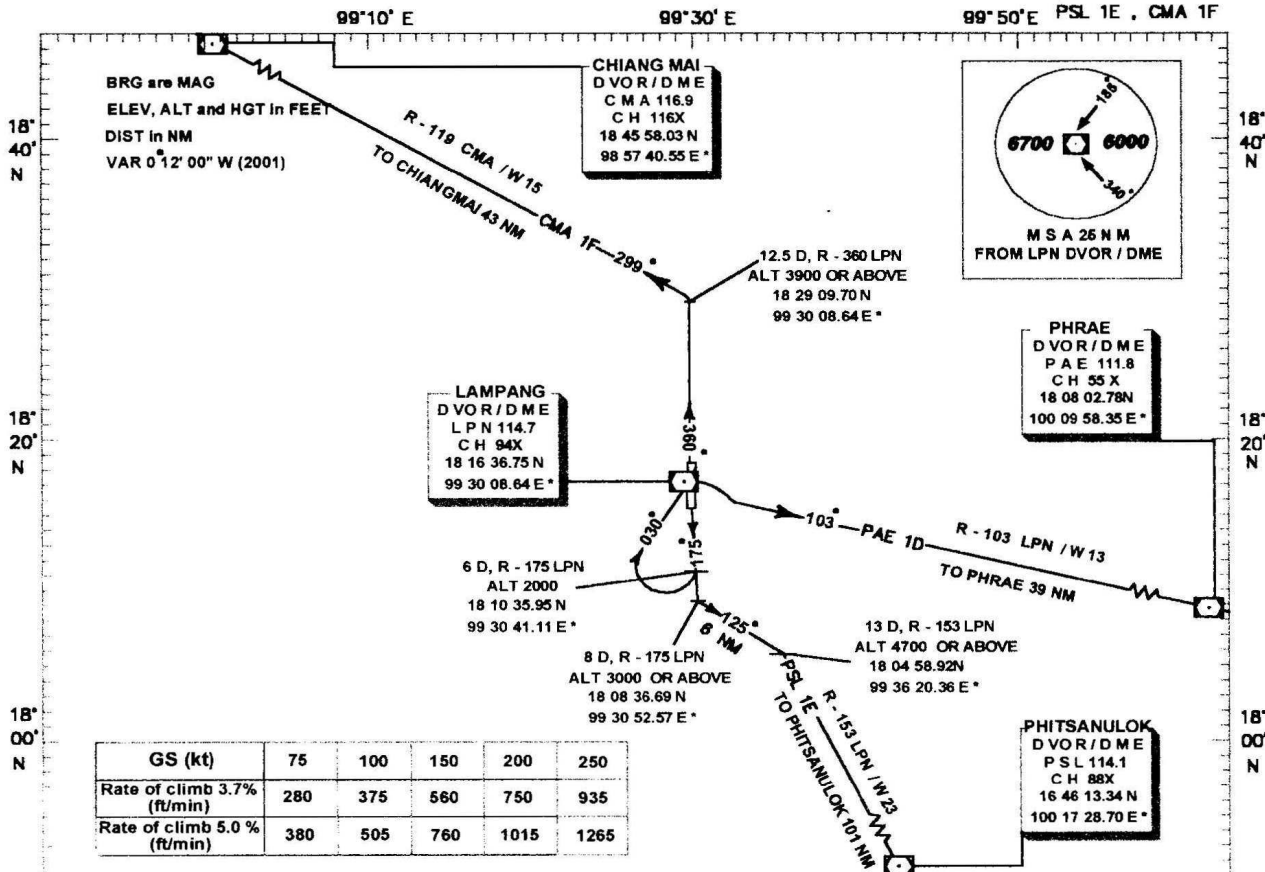


STANDARD DEPARTURE CHART
INSTRUMENT (SID) - ICAO

TRANSITION ALTITUDE
11 000 ft

APP 119.3
TWR 122.3, 236.6

LAMPANG/Lampang
RWY 18
PAE 1D



PHRAE ONE DELTA
(PAE 1D)

- **MINIMUM DESIGN CLIMB GRADIENT 3.7%**
- **AFTER DEPARTURE CLIMB ON TRACK-175° MAG**
UNTIL REACHING ALT 2000 FEET OR ABOVE W 6 DME
- **TURN RIGHT AND TRACK-030° MAG TO LPN DVOR/DME**
- **LEAVE LPN DVOR/DME TURN RIGHT CLIMB ON R-103 LPN**
FOR ALT 11000 FEET TO PAE DVOR/DME

PHITSANULOK ONE ECHO
(PSL 1E)

- **MINIMUM DESIGN CLIMB GRADIENT 5.0%**
- **AFTER DEPARTURE CLIMB ON TRACK-175° MAG**
UNTIL REACHING ALT 3000 FEET OR ABOVE W 8 DME
- **TURN LEFT CLIMB ON TRACK-125° MAG TO INTERCEPT R-153 LPN**
ALT 4700 FEET OR ABOVE W 13 DME AND PROCEED ON R-153 LPN
FOR ALT 11000 FT TO PSL DVOR/DME

CHIANG MAI ONE FOXTROT
(CMA 1F)

- **MINIMUM DESIGN CLIMB GRADIENT 3.7%**
- **AFTER DEPARTURE CLIMB ON TRACK-175° MAG**
UNTIL REACHING ALT 2000 FEET OR ABOVE W 6 DME
- **TURN RIGHT AND TRACK-030° MAG TO LPN DVOR/DME**
- **LEAVE LPN DVOR/DME TURN LEFT CLIMB ON TRACK-360° MAG**
TO INTERCEPT TRACK-299° MAG W 12.5 DME
AND PROCEED ON TRACK-299° MAG (R-119 CMA) FOR 11000 FT TO CMA DVOR/DME