

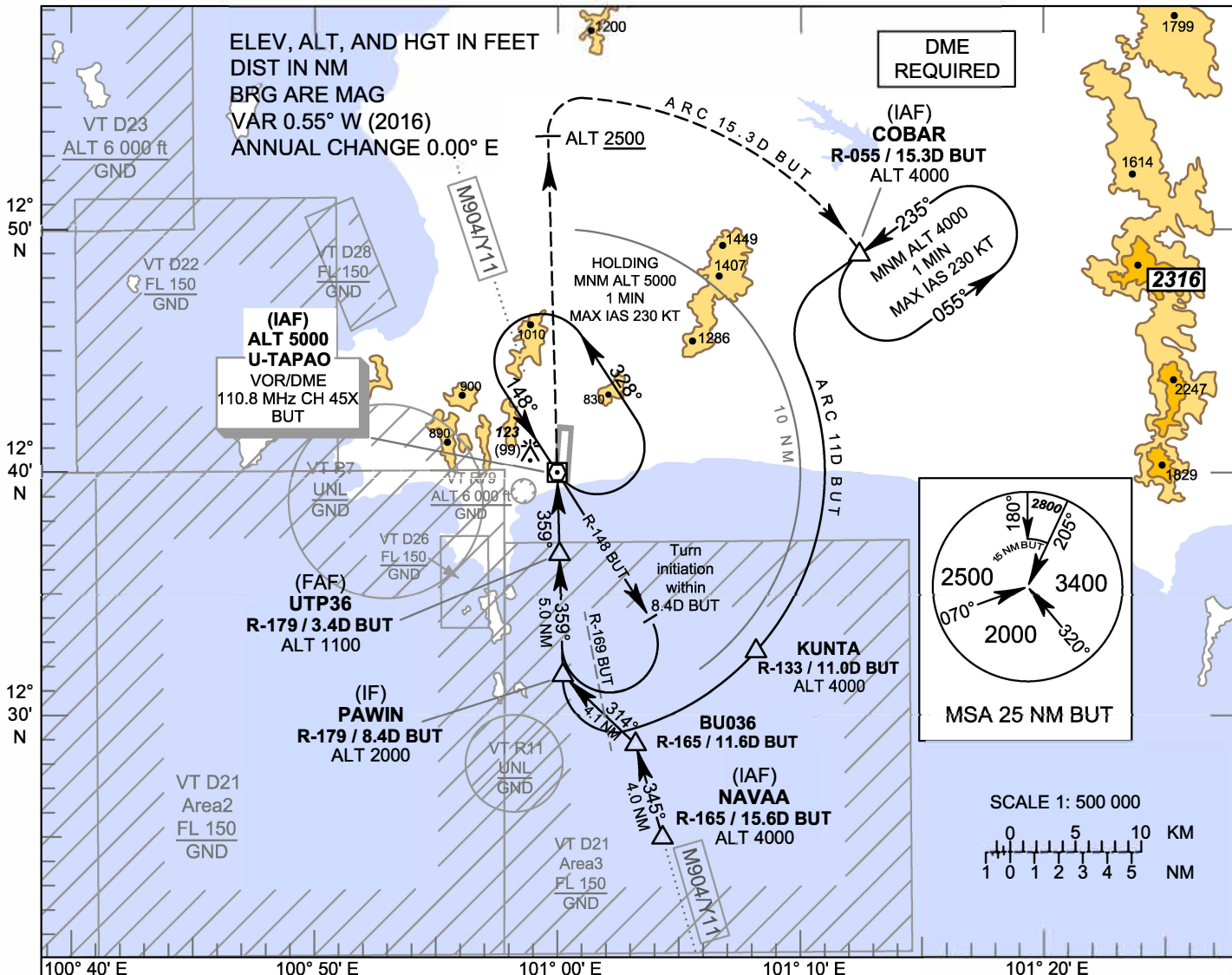
**INSTRUMENT
APPROACH
CHART - ICAO**

AERODROME ELEV 59 FT
HEIGHTS RELATED TO
THR RWY36 - ELEV 24 FT

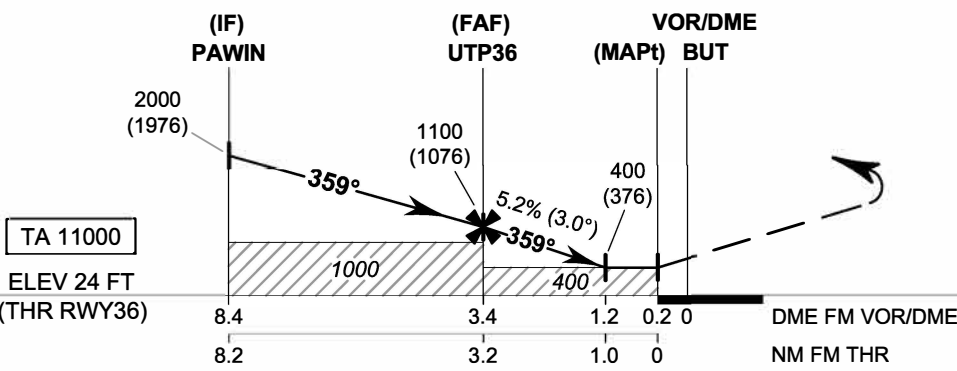
APP : 119.7 , 134.5
238.3 , 273.3
TWR : 118.3 , 227.0
GND : 121.9 , 275.8
ATIS : 127.2

**RAYONG / U-TAPAO RAYONG
PATTAYA INTL (VTBU)**

VOR RWY36



CAUTION: Aircraft shall avoid entering VT R11



MISSED APPROACH:
No turn before MAPt.
Climb to COBAR at 4000 FT via
ARC 15.3 D BUT VOR
and hold or as directed by ATC
(ALT at least 2500 FT before
follow ARC).

CHANGE: TOWER FREQUENCY.

OCA/H	A	B	C	D	Distance (BUT)	FAF	3 D	2 D	1.2 D		
Straight-in Approach	400 (376)				Altitude (Height)	1100 (1076)	960 (936)	645 (621)	400 (376)		
					Ground speed	knot 70	90	100	120	140	160
Circling (OCH AAL)	1200 (1141)		1450 (1391)		Rate of descent	(ft/min) 369	474	527	632	737	843