

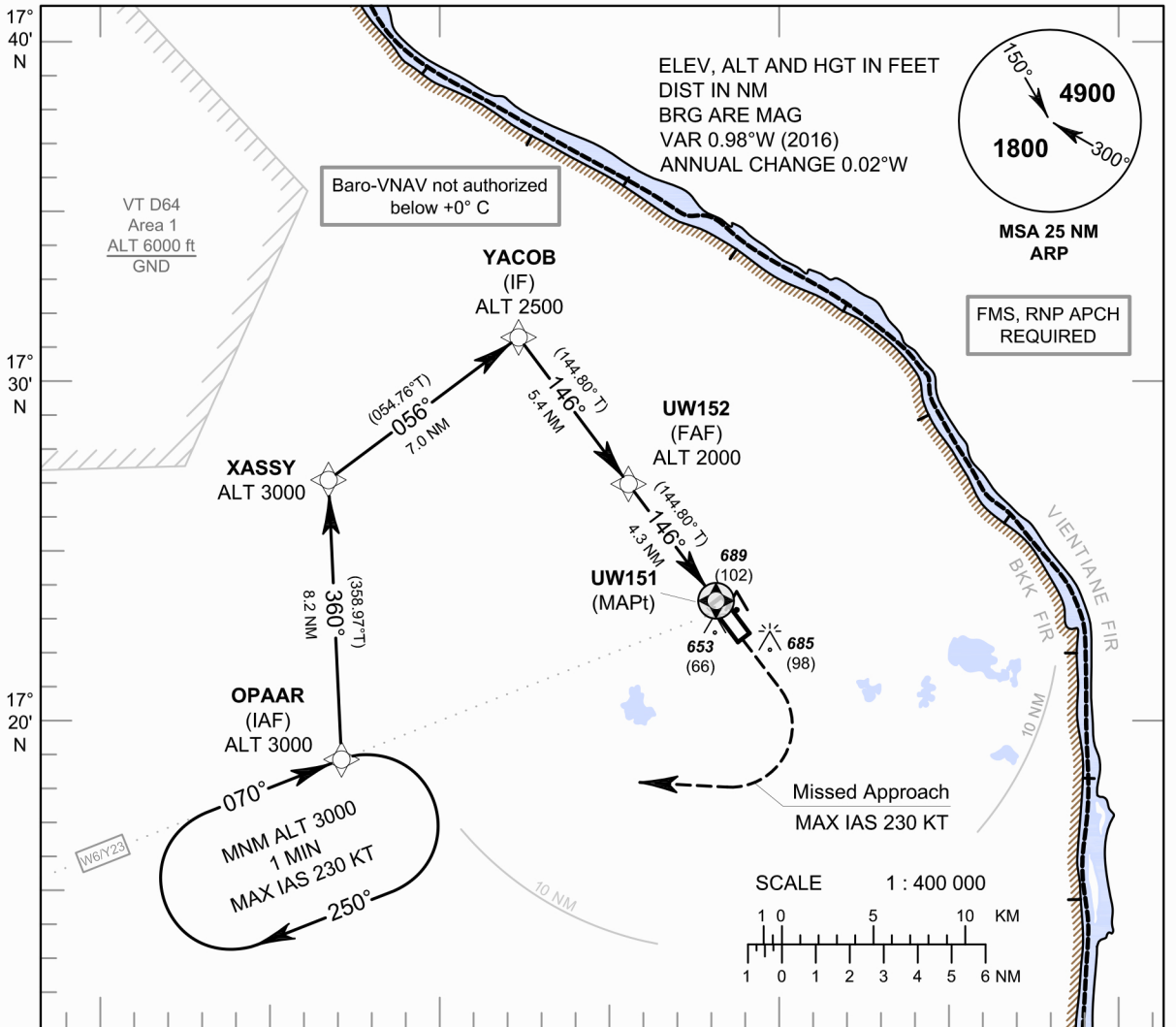
**INSTRUMENT
APPROACH
CHART - ICAO**

AERODROME ELEV 587 FT
HEIGHTS RELATED TO
AERODROME ELEV

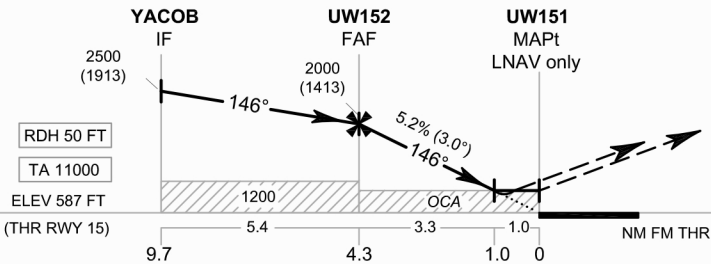
APP : 123.35 , 284.0
TWR : 122.5
GND : 121.9

**NAKHON PHANOM / Nakhon Phanom
(VTUW)**

RNP RWY15



104° 20' E 104° 30' E 104° 40' E 104° 50' E



MISSED APPROACH :
No turn before MAPt.
Speed restricted to
MAX IAS 230 KT until after turn.
Climb on track 146° to 2400 FT
then turn right direct to OPAAR at 3000 FT
and hold or as directed by ATC.

CHANGE: ROUTE Y23 ADDED.

OCA/H	A	B	C	D	NM to NEXT WPT	FAF	4 NM	3 NM	2 NM	1 NM		
LNAV/VNAV	850 (263)				Altitude (Height)	2000 (1413)	1900 (1313)	1585 (998)	1270 (683)	950 (363)		
LNAV	950 (363)				Ground speed	knot	70	90	100	120	140	160
Circling (OCH AAL)	1100 (513)		1300 (713)		Rate of descent (5.2%)	(ft/min)	369	474	527	632	737	843