

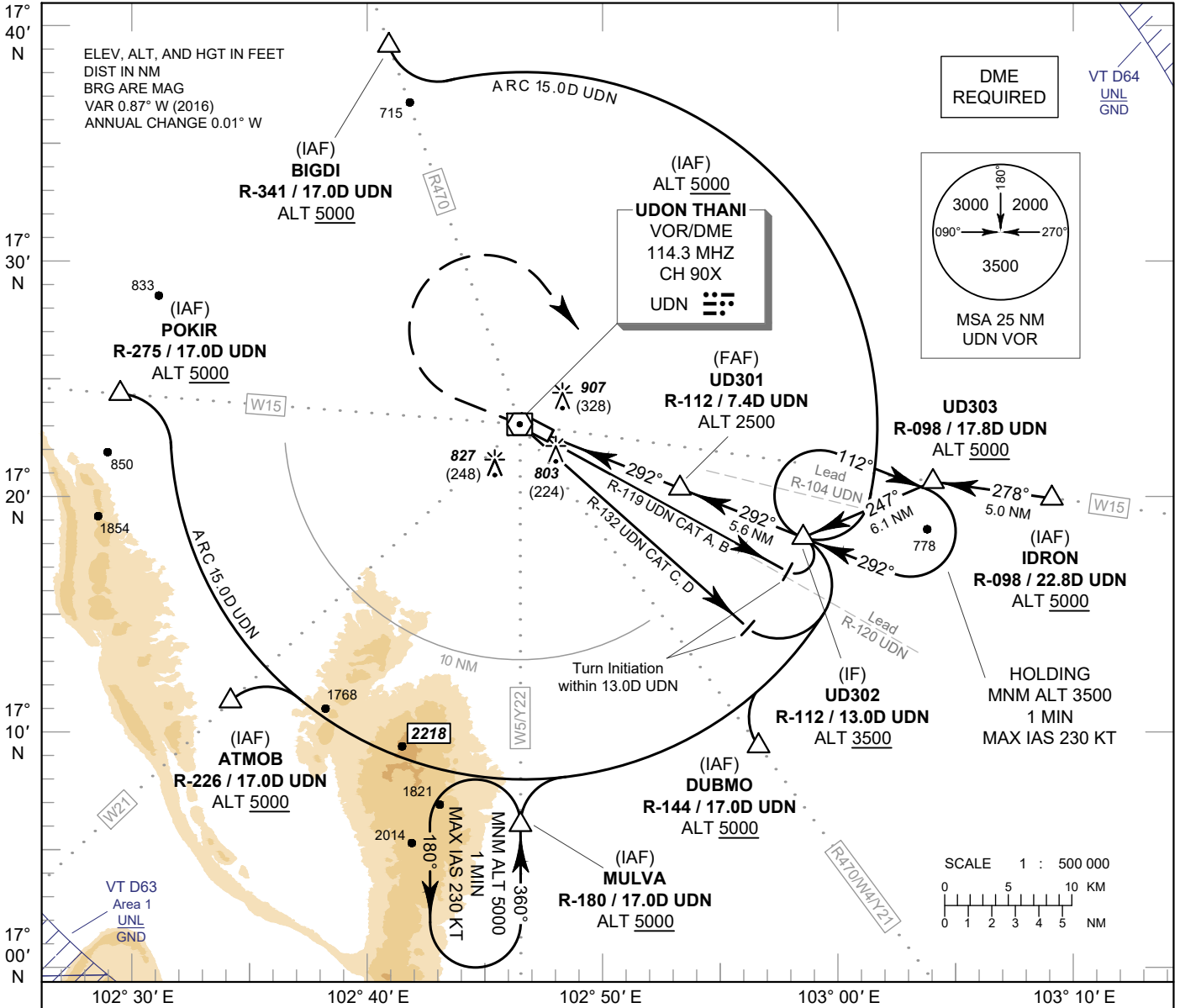
INSTRUMENT APPROACH CHART - ICAO

AERODROME ELEV 579 FT
 HEIGHTS RELATED TO AERODROME ELEV

APP : 126.2, 265.9
 TWR : 122.5, 355.4
 GND : 121.9, 275.8
 ATIS : 127.6

UDON THANI / Udon Thani (VTUD)

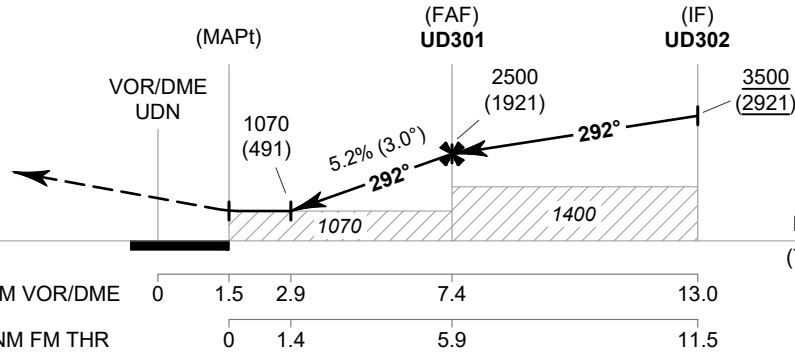
VOR RWY30



MISSED APPROACH :

No turn before MAPt.

Climb straight ahead to 1500 FT, then turn right to intercept outbound R-112 UDN VOR, then proceed to UD302 at minimum 3500 FT and hold or as directed by ATC.



TA 11000
 ELEV 579 FT
 (THR RWY30)

DME FM VOR/DME	0	1.5	2.9	7.4	13.0
NM FM THR	0	1.4	5.9	11.5	

OCA/H	A	B	C	D	Distance (UDN)	2.9D	3D	4D	5D	6D	7D	FAF
Straight - in Approach		1070 (491)			Altitude (Height)	1070 (491)	1100 (521)	1420 (841)	1735 (1156)	2050 (1471)	2365 (1786)	2500 (1921)
Circling* (OCH AAL)		1300 (721)			Ground Speed	knot	70	90	100	120	140	160
*FOR CIRCLING RESTRICTIONS SEE VERSO					Rate of Descent 5.2%	ft/min	369	474	527	632	737	843

CHANGE: ROUTE Y21, Y22 ADDED.