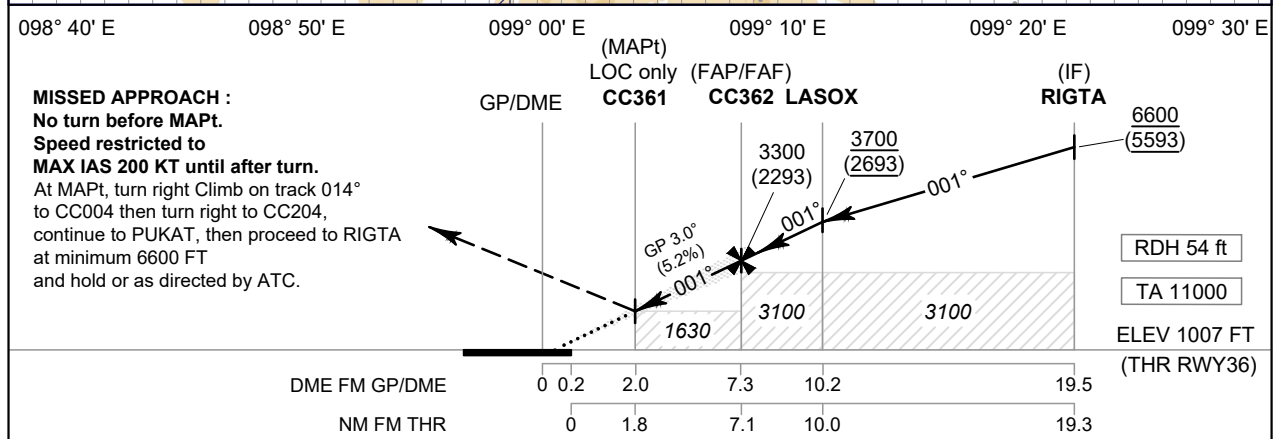
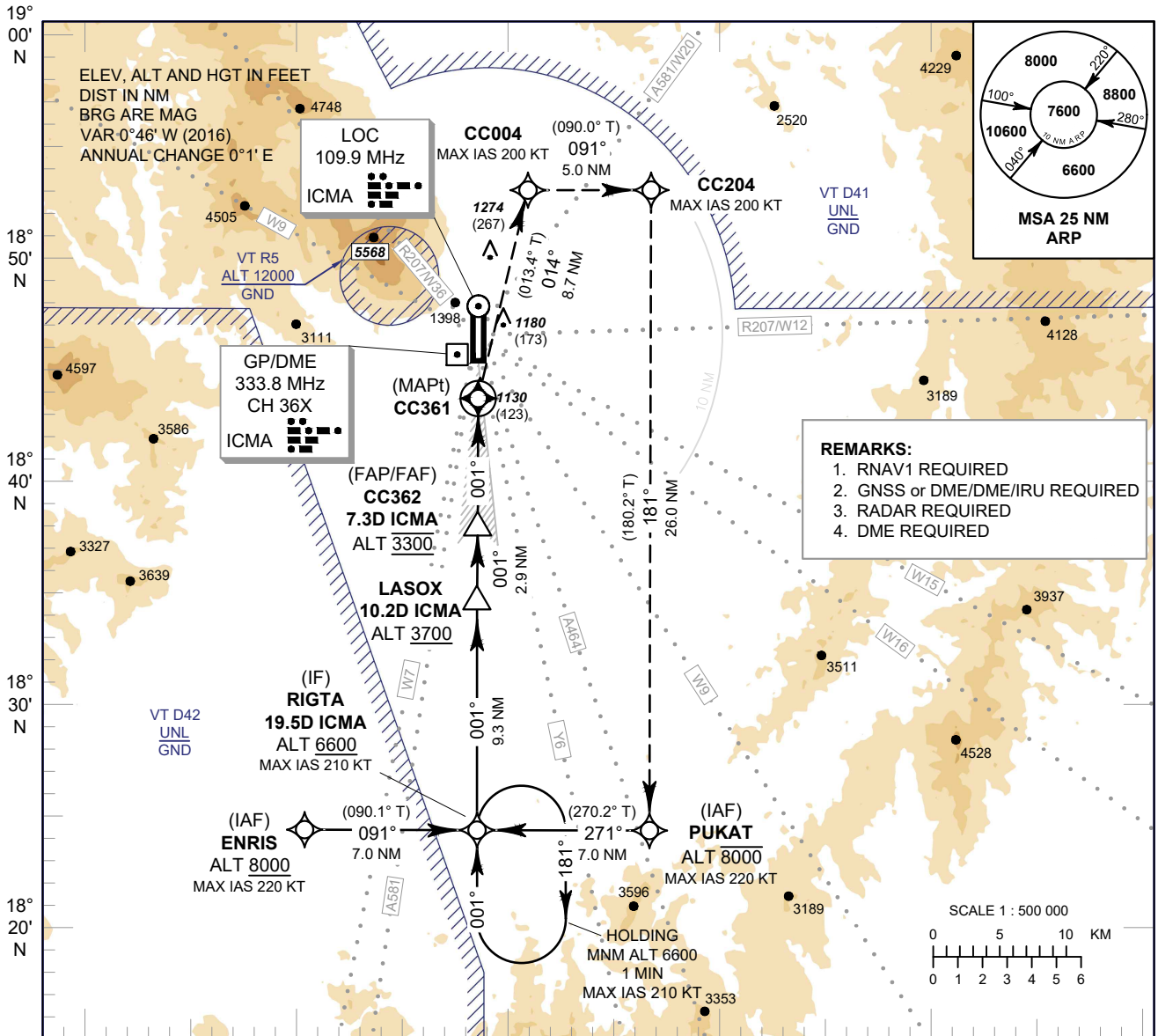


INSTRUMENT APPROACH CHART - ICAO **AERODROME ELEV 1036 FT**
HEIGHTS RELATED TO THR RWY36 - ELEV 1007 FT

APP : 129.6 , 305.4
 TWR : 118.1 , 236.6
 GND : 121.9 , 275.8
 ATIS : 127.2 , 301.5

CHIANG MAI / Chiang Mai Intl (VTCC)

ILS or LOC z RWY36



OCA/H		A	B	C	D	Distance (ICMA)	2 D	3 D	4 D	5 D	6 D	7 D	FAF
Straight-in Approach	CAT I	1420 (413)				Altitude (Height)	1630 (623)	1940 (933)	2260 (1253)	2575 (1568)	2890 (1883)	3205 (2198)	3300 (2293)
	LOC only	1630 (623)				Ground Speed	knot	70	90	100	120	140	160
Circling* (OCH AAL)		2030 (994)	2220 (1184)	2420 (1384)	Rate of Descent	5.2%	ft/min	369	474	527	632	737	843

NOTE: OCA/H 1240 (233) FT of ILS procedure can be achieved for all aircraft categories which can commence a missed approach climb gradient of 4.0% (243 FT/NM) until CC204.

CHANGE: NEW CHART.