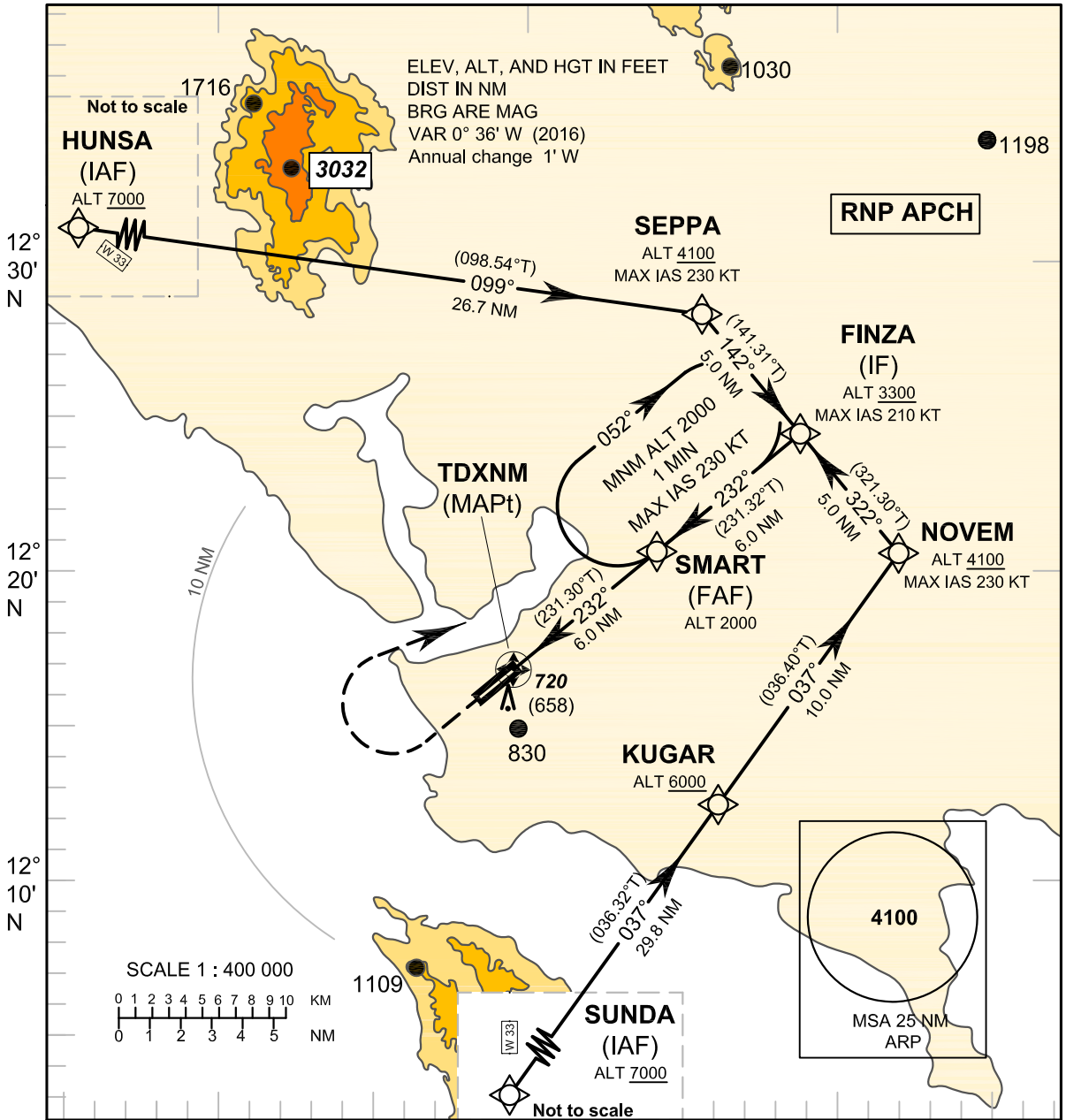


INSTRUMENT APPROACH CHART-ICAO **AERODROME ELEV 82 FT**
HEIGHTS RELATED TO THR RWY23 - ELEV 62 FT

APP : 120.25
 TWR : 122.9

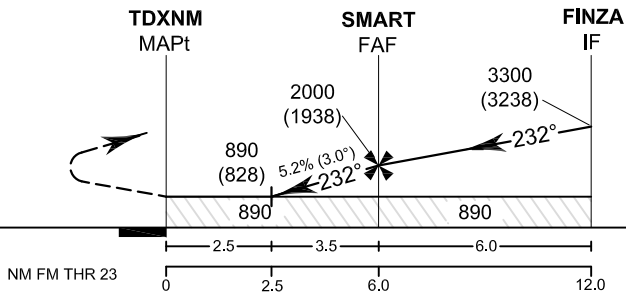
TRAT / Trat (VTBO)
RNP RWY23



102° 10' E 102° 20' E 102° 30' E

TA 11 000

Missed Approach :
No turn before MAPt.
 Climb on track 232° to 1200 FT,
 then turn right direct to **FAF**
 at 2000 FT and hold or as
 directed by ATC.



ELEV 62 FT
 (THR RWY 23)

NM FM THR 23 0 2.5 3.5 6.0 12.0

OCA/H	A	B	C	D	NM to NEXT WPT	2.5 NM	3 NM	4 NM	5 NM	FAF		
LNAV	890 (828)				Altitude (Height)	890 (828)	1060 (998)	1375 (1313)	1690 (1628)	2000 (1938)		
					Ground Speed	knot	70	90	100	120	140	160
Circling (OCH AAL)	1180 (1098)		1280 (1198)		Rate of descent FAF - MAPt 5.2%	(ft/min)	369	474	527	632	737	843

CHANGE: CHART TITLE.