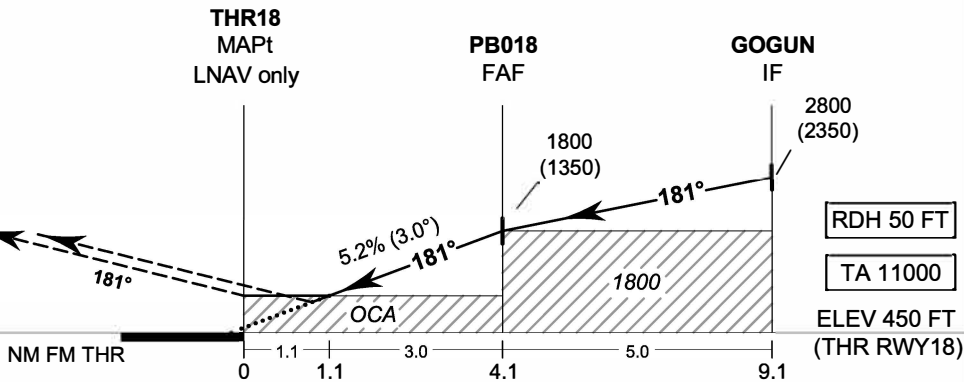


MISSED APPROACH:
No turn before MAPt.
Speed restricted to
MAX IAS 200 KT until after turn.
Climb on track 181° to 1500 FT,
then turn left direct to MAGPU.
Continue to RINRO at 4900 FT
and hold or as directed by ATC.



OCA/H	A	B	C	D	NM to NEXT WPT	1.1 NM	2 NM	3 NM	4 NM	FAF
LNAV / VNAV	720 (270)				Altitude (Height)	850 (400)	1130 (680)	1450 (1000)	1765 (1315)	1800 (1350)
LNAV	850 (400)				Ground speed	knot	70	90	100	120
Circling (OCH AAL)	1200 (750)				Rate of descent (5.2%)	(ft/min)	369	474	527	632
* FOR CIRCLING RESTRICTIONS SEE VERSO										

CHANGE: CHART TITLE.