

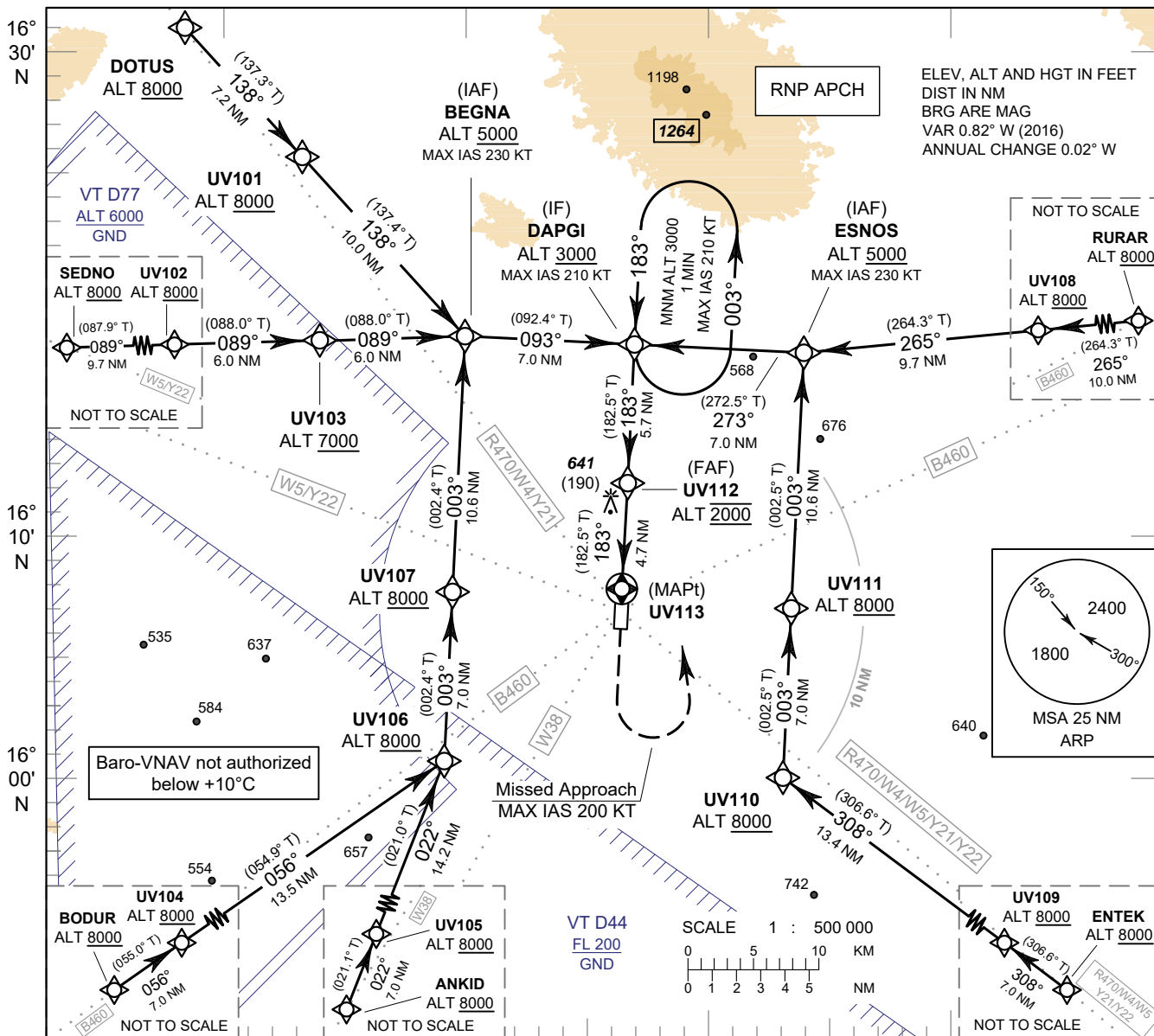
**INSTRUMENT
APPROACH
CHART - ICAO**

**AERODROME ELEV 451 FT
HEIGHTS RELATED TO
THR RWY18 - ELEV 451 FT**

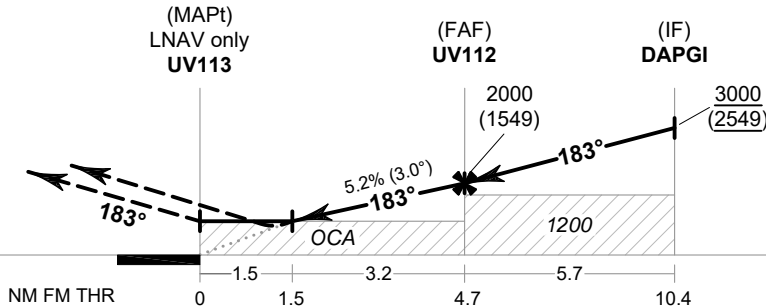
APP : 125.4
TWR : 119.75 , 236.6
ATIS : 128.275

ROI ET / Roi Et (VTUV)

RNP RWY18



MISSED APPROACH :
No turn before MAPt.
Speed restricted to
MAX IAS 200 KT until after turn.
Climb on track 183° to 1500 FT,
then turn left direct to
DAPGI at minimum 3000 FT and
hold or as directed by ATC.



OCA/H	A	B	C	D	NM to NEXT WPT	1.5 NM	2 NM	3 NM	4 NM	FAF			
LNAV/VNAV	750 (299)				Altitude (Height)	970 (519)	1135 (684)	1450 (999)	1765 (1314)	2000 (1549)			
LNAV	970 (519)				Ground Speed	knot	70	90	100	120	140	160	
Circling (OCH AAL)	1200 (749)				Rate of Descent	FAF-MAPt 5.2%	ft/min	369	474	527	632	737	843

CHANGE: ROUTE Y21, Y22 ADDED.