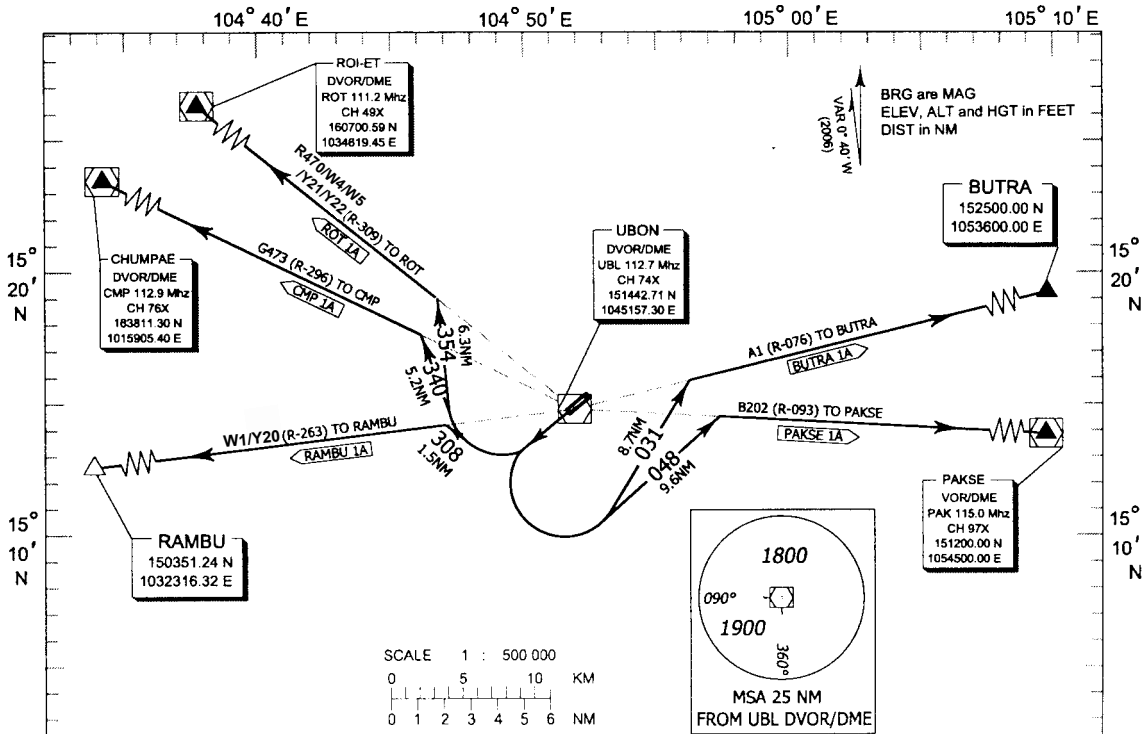


STANDARD INSTRUMENT DEPARTURE CHART
(SID) - ICAO

UBON RATCHATANI / Ubon (VTUU)
RWY 23

APP : 123.5 , 257.8
TWR : 119.9 , 274.5

RAMBU 1A, ROT 1A
CMP 1A, BUTRA 1A
PAKSE 1A



COMMUNICATION FAILURE PROCEDURE
- Squawk A7600
- Comply with last assigned level until next reporting point then climb to flight plan cruising level.

Warning
- No turn before Departure End of Runway
- Procedure Design Gradient = 4.9 % to 1200ft
- Max IAS 230 kts for turning after departure

RAMBU ONE ALPHA : AFTER DEPARTURE CLIMB ON RWY HEADING UNTIL 1200FT OR ABOVE THEN TURN RIGHT HEADING 308 TO INTERCEPT AND PROCEED ON R-263 UBL TO RAMBU
(RAMBU 1A)

CHUMPAE ONE ALPHA : AFTER DEPARTURE CLIMB ON RWY HEADING UNTIL 1200FT OR ABOVE THEN TURN RIGHT HEADING 340 TO INTERCEPT AND PROCEED ON R-296 UBL TO CHUMPAE DVOR/DME
(CMP 1A)

ROIET ONE ALPHA : AFTER DEPARTURE CLIMB ON RWY HEADING UNTIL 1200FT OR ABOVE THEN TURN RIGHT HEADING 354 TO INTERCEPT AND PROCEED ON R-309 UBL TO ROIET DVOR/DME
(ROT 1A)

BUTRA ONE ALPHA : AFTER DEPARTURE CLIMB ON RWY HEADING UNTIL 1200FT OR ABOVE THEN TURN LEFT HEADING 031 TO INTERCEPT AND PROCEED ON R-076 UBL TO BUTRA
(BUTRA 1A)

PAKSE ONE ALPHA : AFTER DEPARTURE CLIMB ON RWY HEADING UNTIL 1200FT OR ABOVE THEN TURN LEFT HEADING 048 TO INTERCEPT AND PROCEED ON R-093 TO PAKSE VOR/DME
(PAKSE 1A)

CHANGE:ROUTE Y20, Y21, Y22 ADDED.