

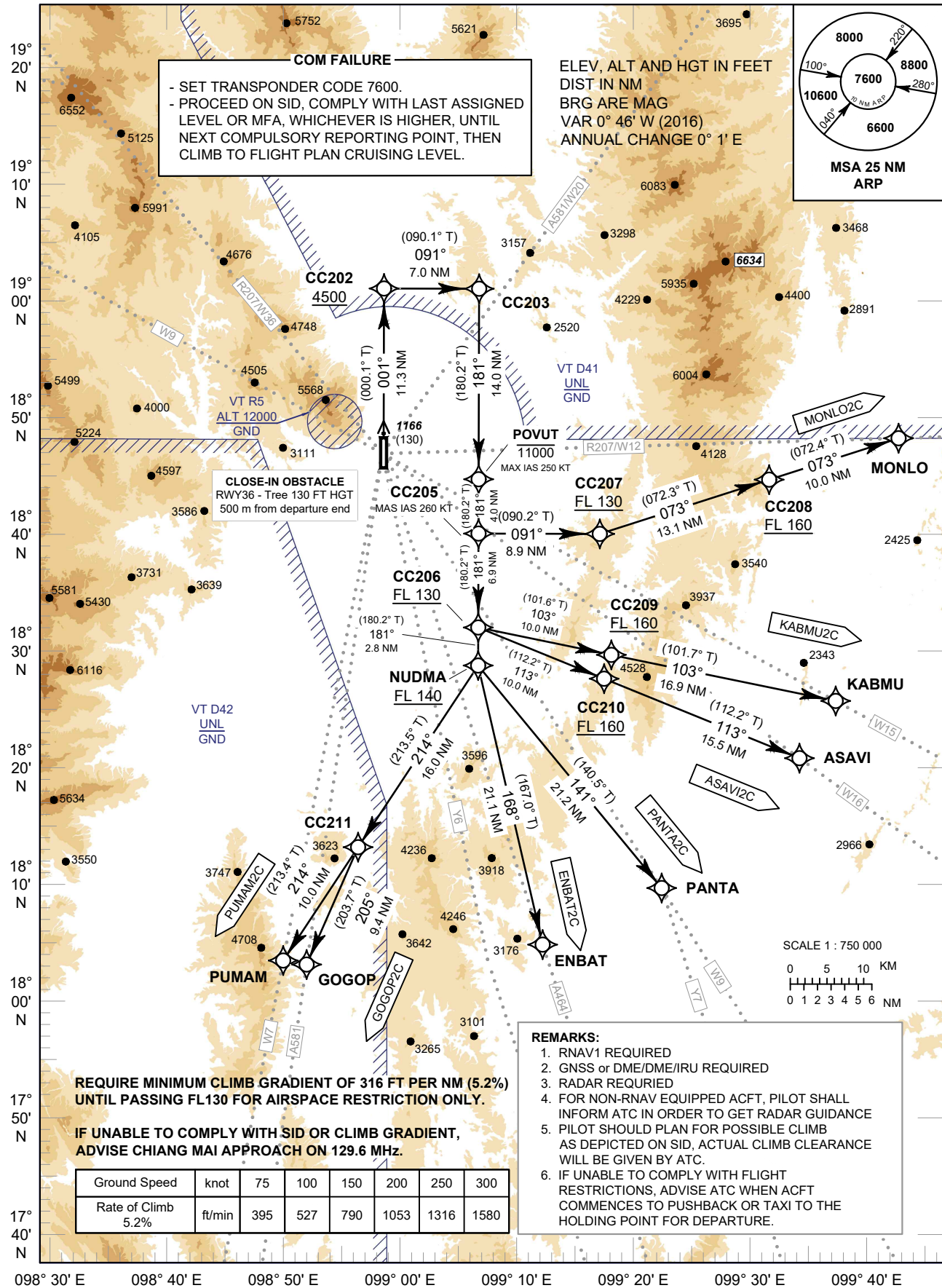
**STANDARD DEPARTURE CHART - INSTRUMENT (SID) - ICAO**

TRANSITION ALTITUDE  
11000 FT

APP : 129.6 , 305.4  
TWR : 118.1 , 236.6  
GND : 121.9 , 275.8  
ATIS : 127.2 , 301.5

**CHIANG MAI / Chiang Mai Intl (VTCC)**

**RNAV RWY36**  
ASAVI2C ENBAT2C GOGOP2C  
KABMU2C MONLO2C PANTA2C PUMAM2C



**REQUIRE MINIMUM CLIMB GRADIENT OF 316 FT PER NM (5.2%) UNTIL PASSING FL130 FOR AIRSPACE RESTRICTION ONLY.**

**IF UNABLE TO COMPLY WITH SID OR CLIMB GRADIENT, ADVISE CHIANG MAI APPROACH ON 129.6 MHz.**

Ground Speed	knot	75	100	150	200	250	300
Rate of Climb 5.2%	ft/min	395	527	790	1053	1316	1580

CHANGE: NEW CHART.