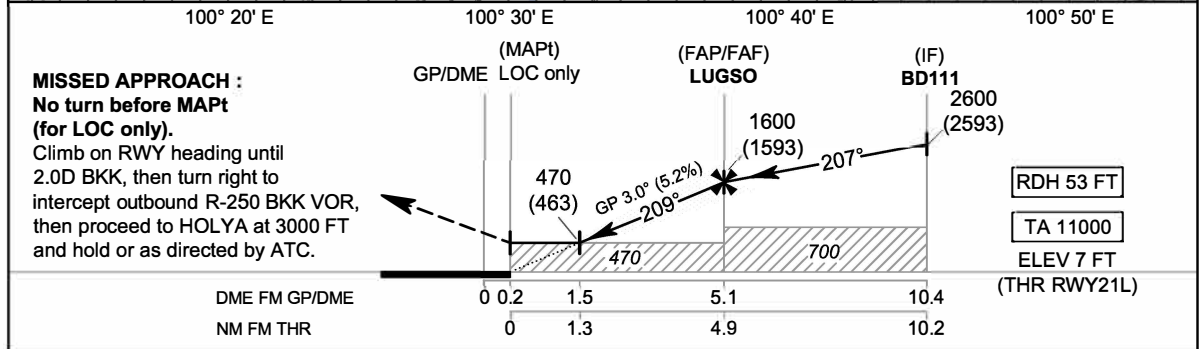
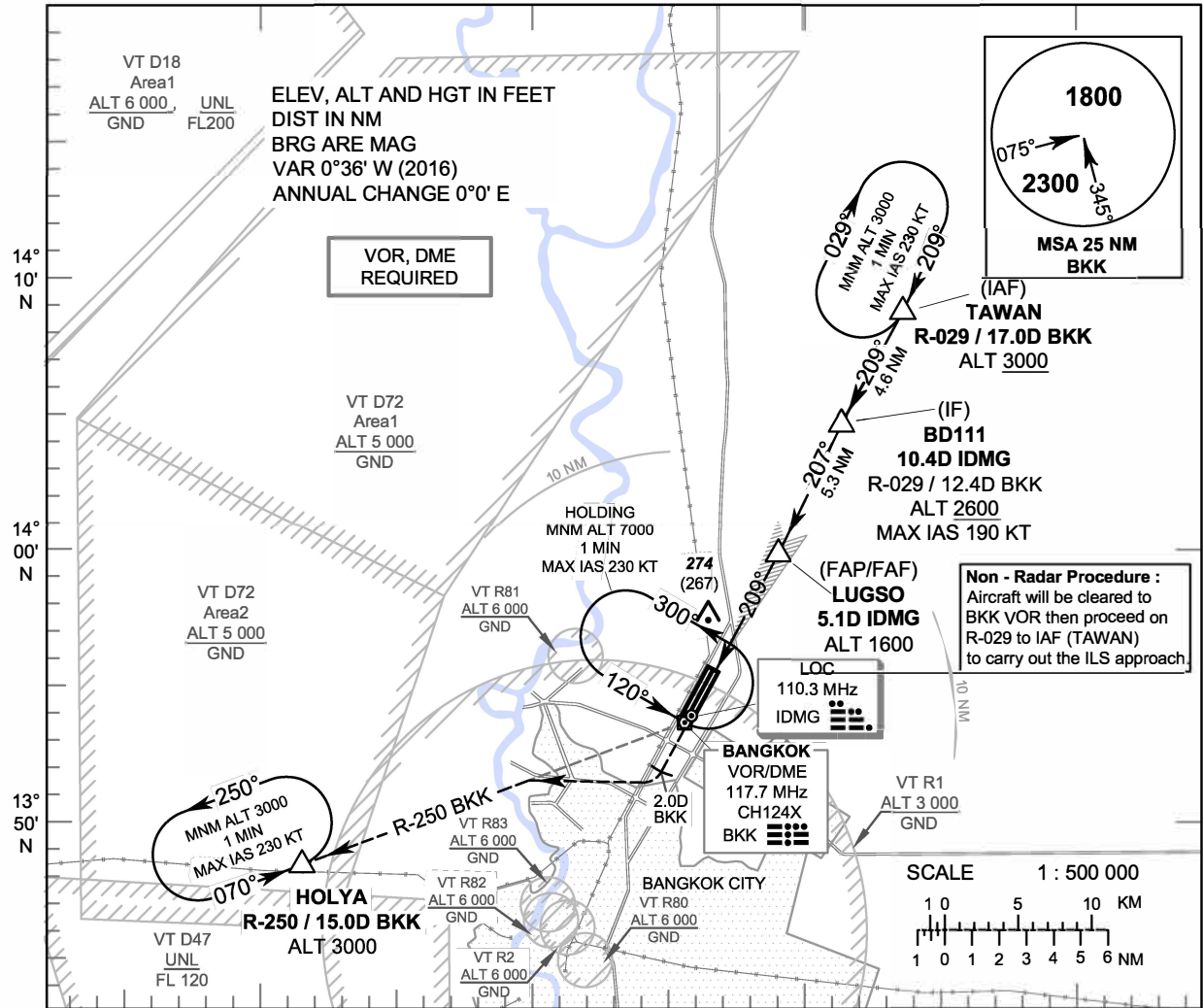


INSTRUMENT APPROACH CHART - ICAO
AERODROME ELEV 9 FT
HEIGHTS RELATED TO THR RWY21L - ELEV 7 FT

APP	: 119.1, 262.5
	: 119.4, 262.5
	: 120.3, 262.5
	: 128.95, 262.5
	: 122.35, 262.5
	: 124.35, 262.5
	: 125.2, 262.5
DAR	: 133.0, 262.5
TWR	: 118.1, 236.6
ATIS	: 126.4, 344.6

BANGKOK / Don Mueang Intl (VTBD)
ILS or LOC y RWY21L



MISSED APPROACH :		(MAPt)	(FAP/FAF)	(IF)									
		GP/DME	LUGSO	BD111									
		LOC only											
		No turn before MAPt (for LOC only).											
		Climb on RWY heading until 2.0D BKK, then turn right to intercept outbound R-250 BKK VOR, then proceed to HOLYA at 3000 FT and hold or as directed by ATC.											
DME FM GP/DME		0	0.2	1.5	5.1	10.4							
NM FM THR		0	1.3	4.9	10.2								
OCA/H		A	B	C	D	GS OUT	Distance (IDMG)	1.5 D	2 D	3 D	4 D	5 D	FAF
Straight - in Approach		220 (213)				GS OUT	Altitude (Height)	470 (463)	625 (618)	940 (933)	1260 (1253)	1575 (1568)	1600 (1593)
LOC only		470 (463)					Ground speed	knot	70	90	100	120	140
Circling (OCH AAL)		800 (791)				Rate of descent (5.2%)	ft/min	369	474	527	632	737	843

CHANGE: CIRCLING ALT.