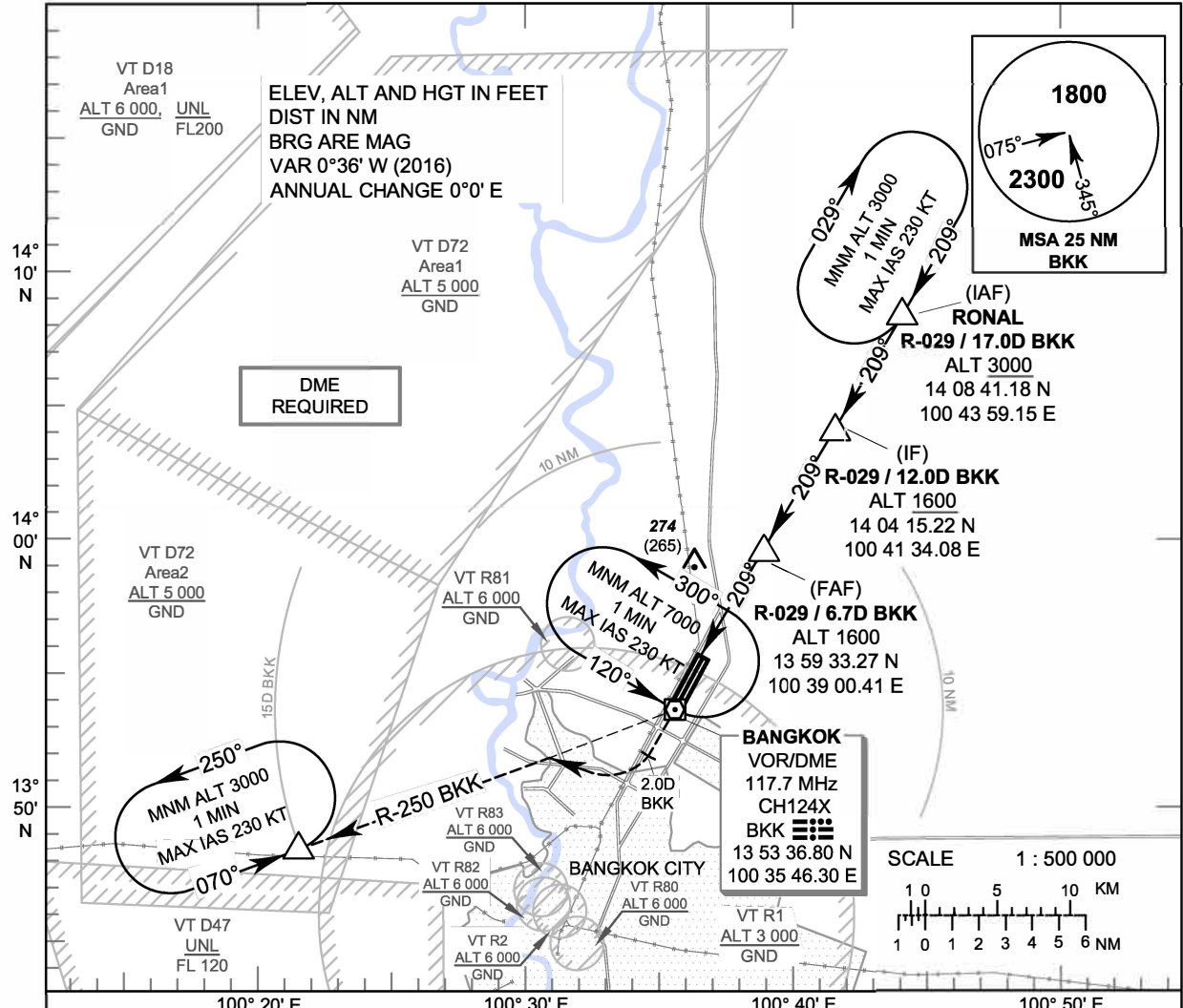


INSTRUMENT APPROACH CHART - ICAO **AERODROME ELEV 9 FT**
HEIGHTS RELATED TO AERODROME ELEV

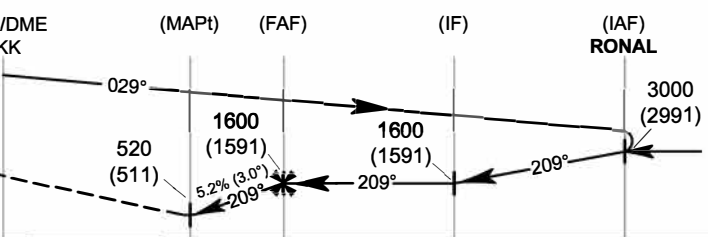
APP	: 119.1, 262.5
	: 119.4, 262.5
	: 120.3, 262.5
	: 128.95, 262.5
	: 122.35, 262.5
	: 124.35, 262.5
	: 125.2, 262.5
DAR	: 133.0, 262.5
TWR	: 118.1, 236.6
ATIS	: 126.4, 344.6

BANGKOK / Don Mueang Intl (VTBD)
VOR RWY21R



MISSED APPROACH :
No turn before MAPt.
 Climb straight ahead to VOR/DME BKK until 2 DME BKK outbound then turn right continue climb on R-250 BKK VOR to 3000 FT and hold at 15 DME BKK VOR or as directed by ATC.

ELEV 7 FT
(THR RWY21R)
TA 11000
NM FM THR 21R
DME FM VOR/DME



OCA/H	A	B	C	D	Distance (BKK)	3.3 DME	4 DME	5 DME	6 DME		
						Altitude (Height)	Altitude (Height)	Altitude (Height)	Altitude (Height)		
Straight - in Approach	520 (511)				520 (511)	730 (721)	1050 (1041)	1360 (1351)			
	Ground speed		knot		100	120	140	160	180	200	
Circling (OCH AAL)	800 (791)				1100 (1091)	2:02	1:42	1:27	1:17	1:08	1:01
	Rate of descent		(ft/min)		531	637	743	849	955	1061	

CHANGE: CIRCLING ALT.