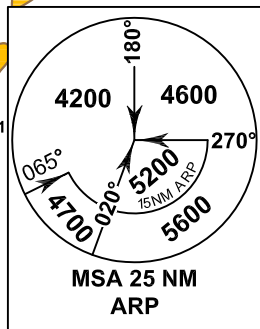
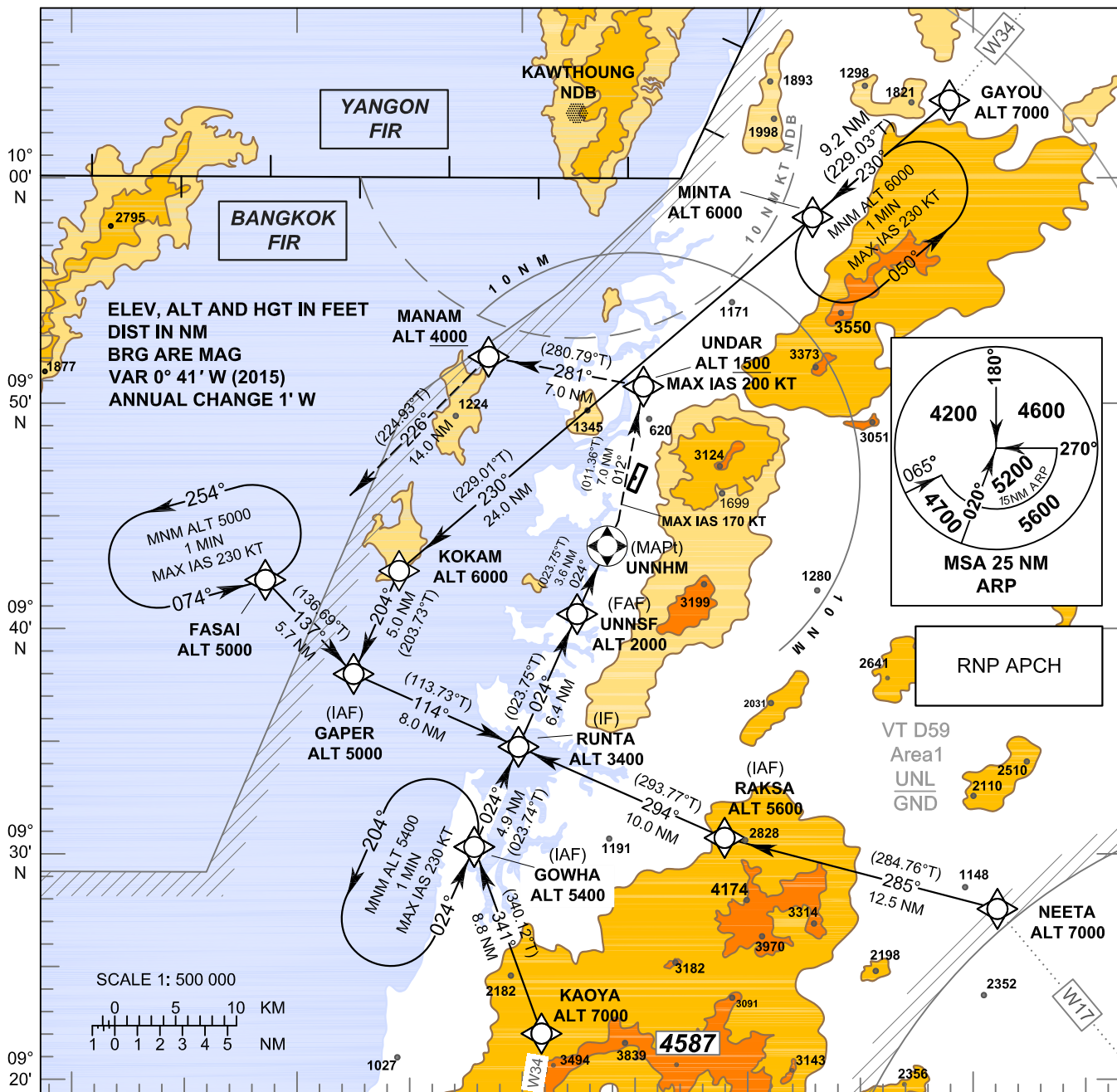


**INSTRUMENT APPROACH CHART - ICAO**

**AERODROME ELEV 57 FT**  
 HEIGHTS RELATED TO  
 THR RWY 02 - ELEV 36 FT

APP : 125.1  
 TWR : 122.25 , 236.6  
 ATIS : 126.475

**RANONG / Ranong (VTSR)**  
 RNP RWY02



<p><b>MISSED APPROACH:</b>          No turn before MAPt.          Speed restricted to MAX IAS 170 KT until UNDAR and 200 KT until after turn.          At MAPt, turn left climb on course 012° to UNDAR at or above 1500 FT and continue to MANAM then FASAI at 5000 FT and hold or as directed by ATC.</p>										
<p>TA 11000          ELEV 36 FT          (THR RWY 02)</p>										
OCA/H	A	B	C	D	NM to THR 02	FAF	5 NM	4 NM	3 NM	2.4 NM
LNAV	850 (814)				Altitude (Height)	2000 (1964)	1665 (1629)	1350 (1314)	1035 (999)	850 (814)
Circling (OCH AAL)	Not Authorized				Ground speed	knot	70	90	100	120
					Rate of descent	(ft/min)	369	474	527	632
							70	90	100	120
							369	474	527	632
							474	527	632	737
							527	632	737	843
<p><b>NOTE : OCA (OCH): 780 (744) FT; MAPt at 2.2 NM FM THR can be achieved for all aircraft categories which can commence a missed approach climb gradient of 5.0% (304 FT/NM) until passing UNDAR.</b></p>										

CHANGE: CHART TITLE: