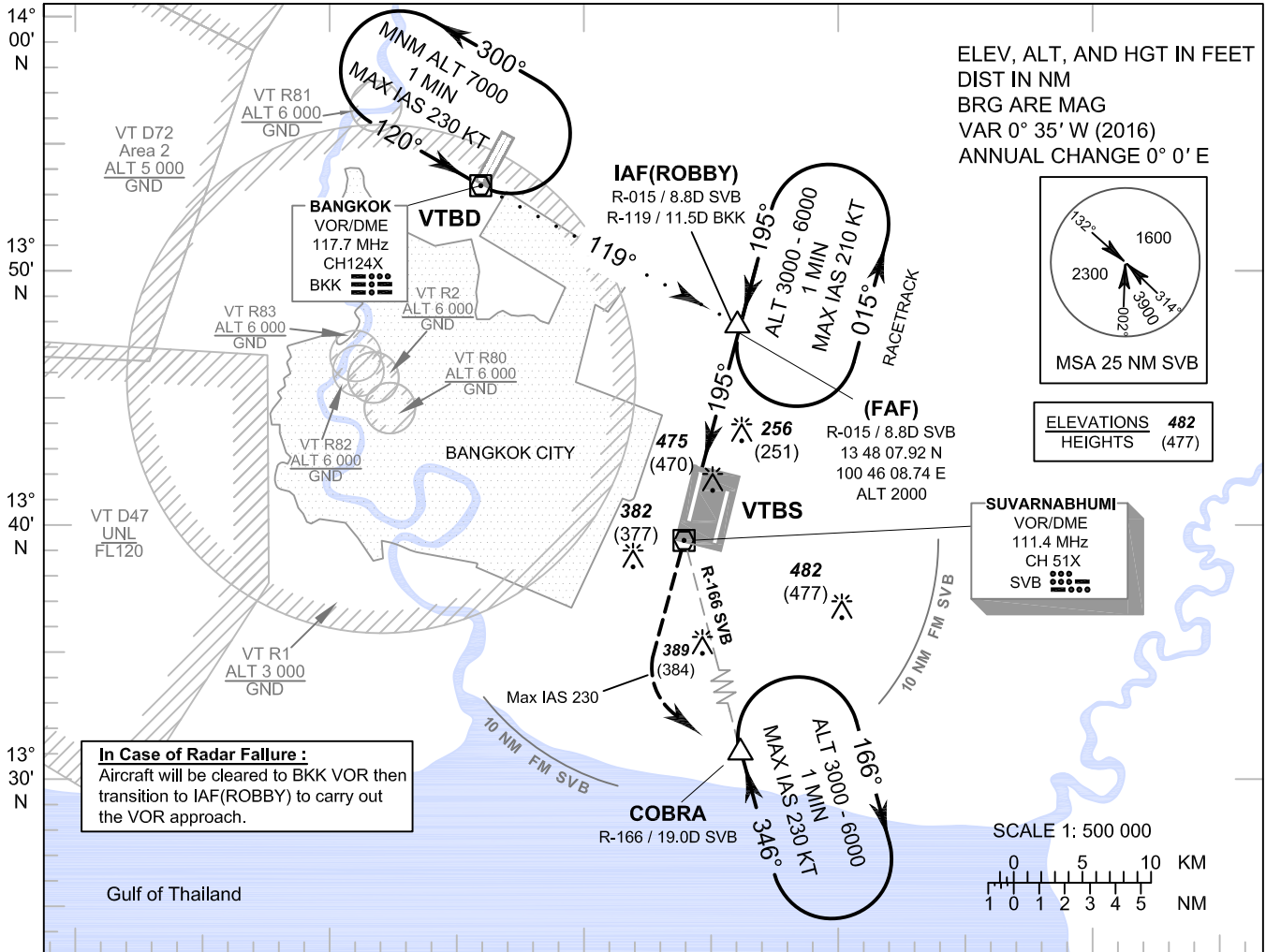


INSTRUMENT APPROACH CHART - ICAO

AERODROME ELEV 5 FT HEIGHTS RELATED TO AERODROME ELEV

BANGKOK / Suvarnabhumi Intl (VTBS)
VOR RWY19R

APP	: 119.1, 262.5
	: 120.3, 262.5
	: 128.95, 262.5
	: 122.35, 262.5
	: 124.35, 262.5
	: 125.2, 262.5
ARR	: 121.1
	: 126.3
TWR	: 118.2, 274.5
	: 119.0
ARR ATIS	: 133.6, 278.6



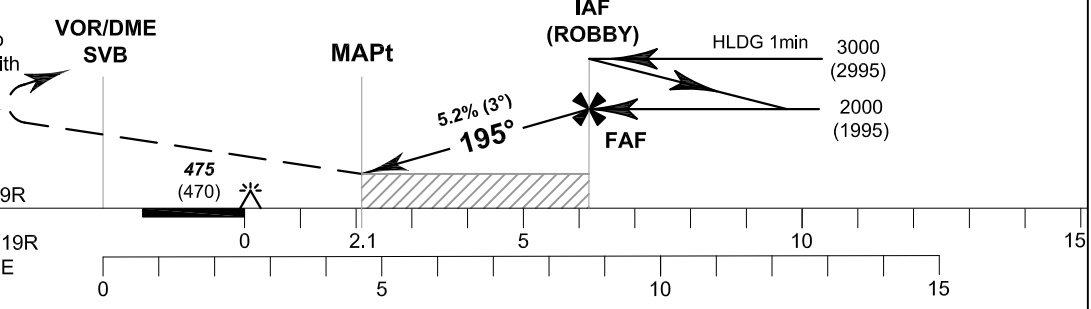
In Case of Radar Failure :
Aircraft will be cleared to BKK VOR then transition to IAF(ROBBY) to carry out the VOR approach.

100° 20' E 100° 30' E 100° 40' E 100° 50' E 101° 00' E

VOR/DME	5D	6D	7D
ALT (HGT) 3° APCH	790 (785)	1100 (1095)	1420 (1415)

TA 11000

MISSED APPROACH:
Climb straight ahead to 3000ft, then turn left with IAS not above 230kt to COBRA and hold or as directed by ATC.



OCA/H	A	B	C	D	Ground Speed	kt	100	120	140	160	180
Straight-in Approach	730 (725)				FAF-MAPt 4.0 NM	m:s	2 : 24	2 : 00	1 : 43	1 : 30	1 : 20
Circling (OCH AAL)	800 (795)	900 (895)			Rate of descent	ft/min	527	632	737	843	948

CHANGE: APP FREQ. ARR ATIS ADDED.