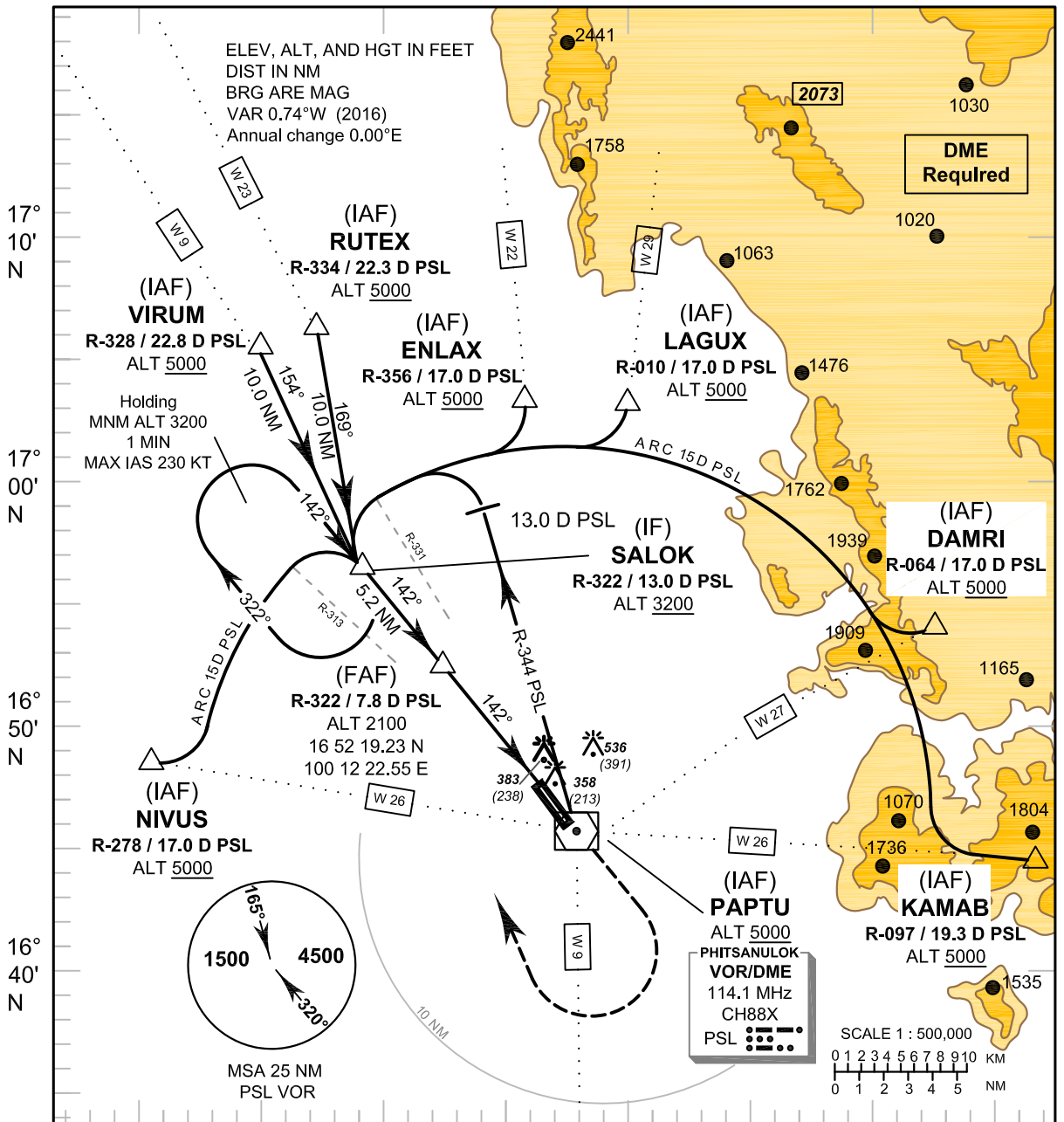


INSTRUMENT AERODROME ELEV 145 FT
APPROACH HEIGHTS RELATED TO
CHART - ICAO AERODROME ELEV

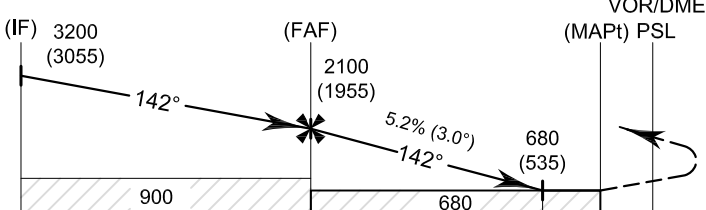
APP : 120.7, 284.0
 TWR : 118.9, 236.6
 GND : 121.9

PHITSANULOK/Phitsanulok (VTPP)
VOR RWY14



TA 11000

Missed Approach :
No turn before MAPt.
 Climb on R-322 to PSL VOR, then climb straight ahead to 1600 FT, and turn right to intercept outbound R-322 PSL VOR, then proceed to **SALOK** at 3200 FT and hold or as directed by ATC.



ELEV 145 FT (THR RWY 14)
 NM FM THR 14
 DME FM VOR/DME

OCA/H	A	B	C	D	Distance (PSL)	FAF	7 D	6 D	5 D	4 D	3.3 D	
Straight - in approach	680 (535)				Altitude (Height)	2100 (1955)	1835 (1690)	1520 (1375)	1205 (1060)	890 (745)	680 (535)	
					Ground Speed	knot	70	90	100	120	140	160
Circling (OCH AAL)	840 (695)	930 (785)			Rate of descent (5.2%)	ft/min	369	474	527	632	737	843

CHANGE: MORSE CODE OF RADIO NAVIGATION AIDS ADDED. WPT NAME.