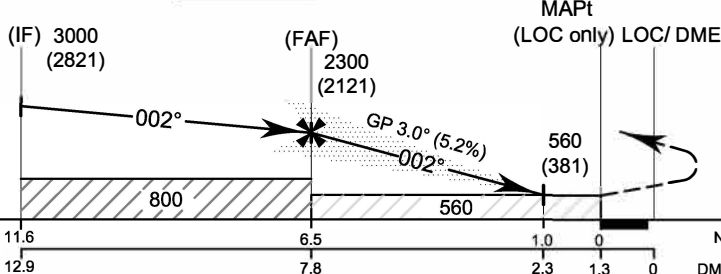


099° 30' E 099° 40' E 099° 50' E 100° 00' E

TA 11000 **RDH 50 FT**



Missed Approach :
No turn before MAPt (for LOC only).
Speed restricted to
MAX IAS 210 KT until after turn.
Climb on track 002° to 3700 FT, then
turn left direct to VEGTO at 5200 FT
and hold or as directed by ATC.

| OCA/H | A | B | C | D | GS out | Distance (ISKT) | FAF | 7 D | 6 D | 5 D | 4 D | 3 D | 2.3 D |
|----------------------------|-----------|-----------|---|---|--------|------------------------|-------------|-------------|-------------|-------------|------------|-----------|-----------|
| | | | | | | Altitude (Height) | 2300 (2121) | 2030 (1851) | 1715 (1536) | 1400 (1221) | 1080 (901) | 765 (586) | 560 (381) |
| Straight-in approach CAT I | 390 (211) | | | | | knot | 70 | 90 | 100 | 120 | 140 | 140 | 160 |
| LOC Only | 560 (381) | | | | | Rate of descent (3.0°) | (ft/min) | 372 | 478 | 531 | 637 | 743 | 849 |
| Circling (OCH AAL) | 790 (611) | 890 (711) | | | | | | | | | | | |