

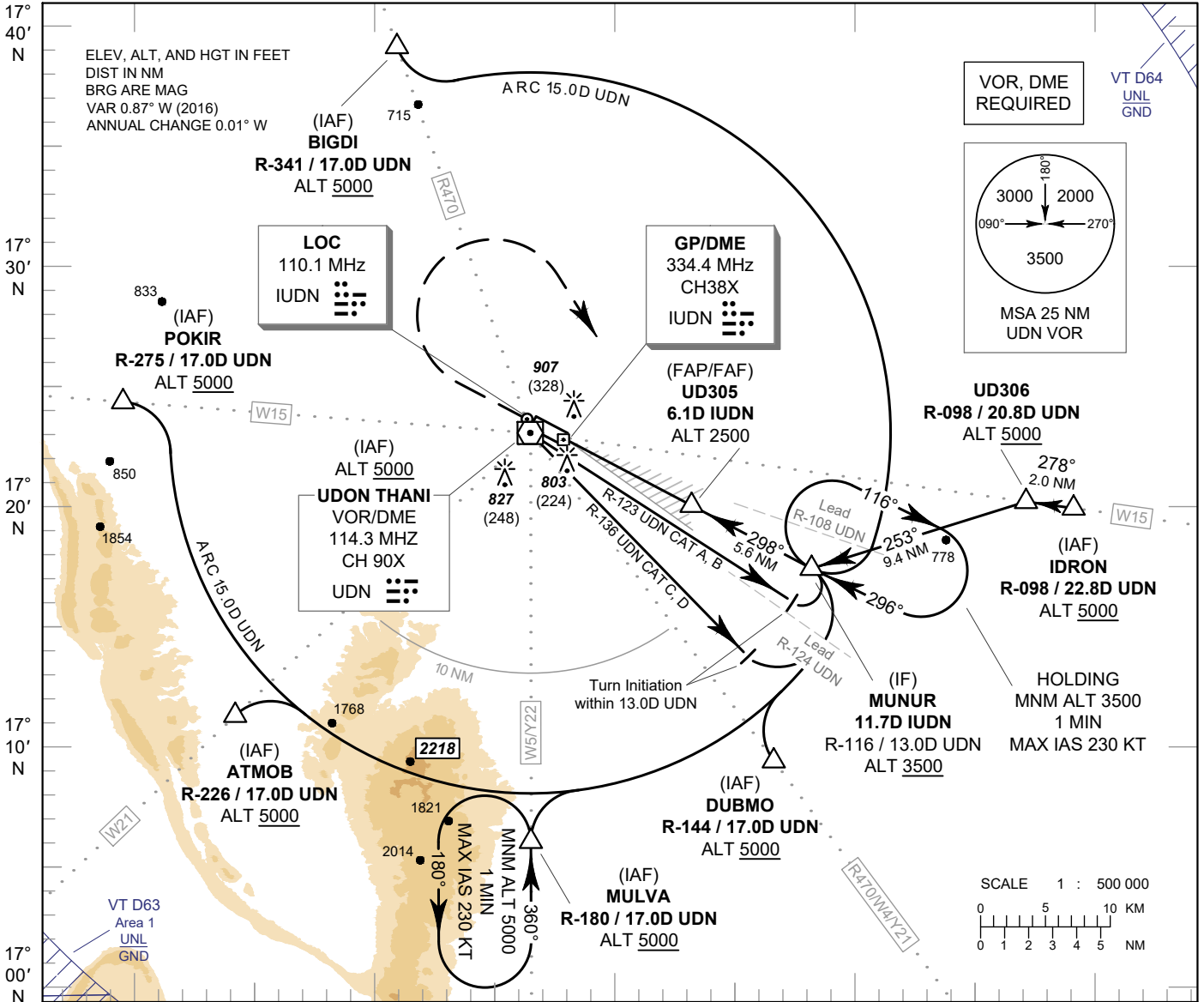
INSTRUMENT APPROACH CHART - ICAO

AERODROME ELEV 579 FT
 HEIGHTS RELATED TO
 THR RWY30 - ELEV 579 FT

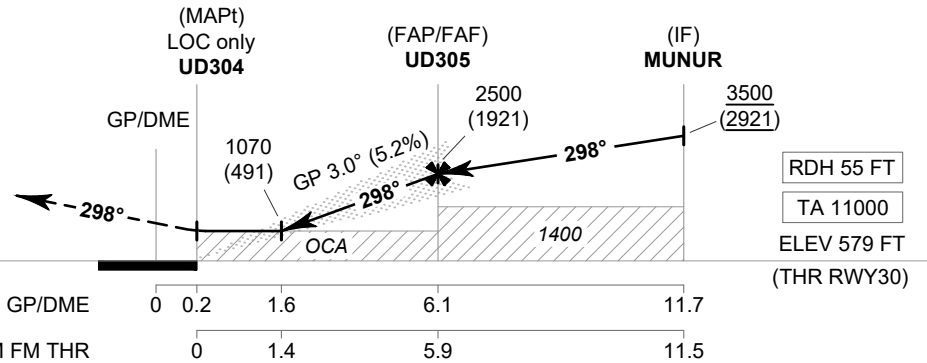
APP : 126.2, 265.9
 TWR : 122.5, 355.4
 GND : 121.9, 275.8
 ATIS : 127.6

UDON THANI / Udon Thani (VTUD)

ILS or LOC y RWY30



MISSED APPROACH :
No turn before MAPt (for LOC only).
 Climb straight ahead to 1500 FT,
 then turn right to intercept outbound
 R-116 UDN VOR, then proceed to
 MUNUR at minimum 3500 FT and
 hold or as directed by ATC.



DME FM GP/DME 0 0.2 1.6 6.1 11.7
 NM FM THR 0 1.4 5.9 11.5

OCA/H		A	B	C	D	GS OUT	Distance (IUDN)	1.6D	2D	3D	4D	5D	6D	FAF
Straight - in Approach	CAT I	860 (281)	870 (291)	880 (301)	890 (311)		Altitude (Height)	1070 (491)	1200 (621)	1515 (936)	1830 (1251)	2145 (1566)	2460 (1881)	2500 (1921)
LOC only		1070 (491)				Ground Speed	knot	70	90	100	120	140	160	
Circling* (OCH AAL)		1300 (721)				Rate of Descent 5.2%	ft/min	369	474	527	632	737	843	

*FOR CIRCLING RESTRICTIONS SEE VERSO

CHANGE: ROUTE Y21, Y22 ADDED.