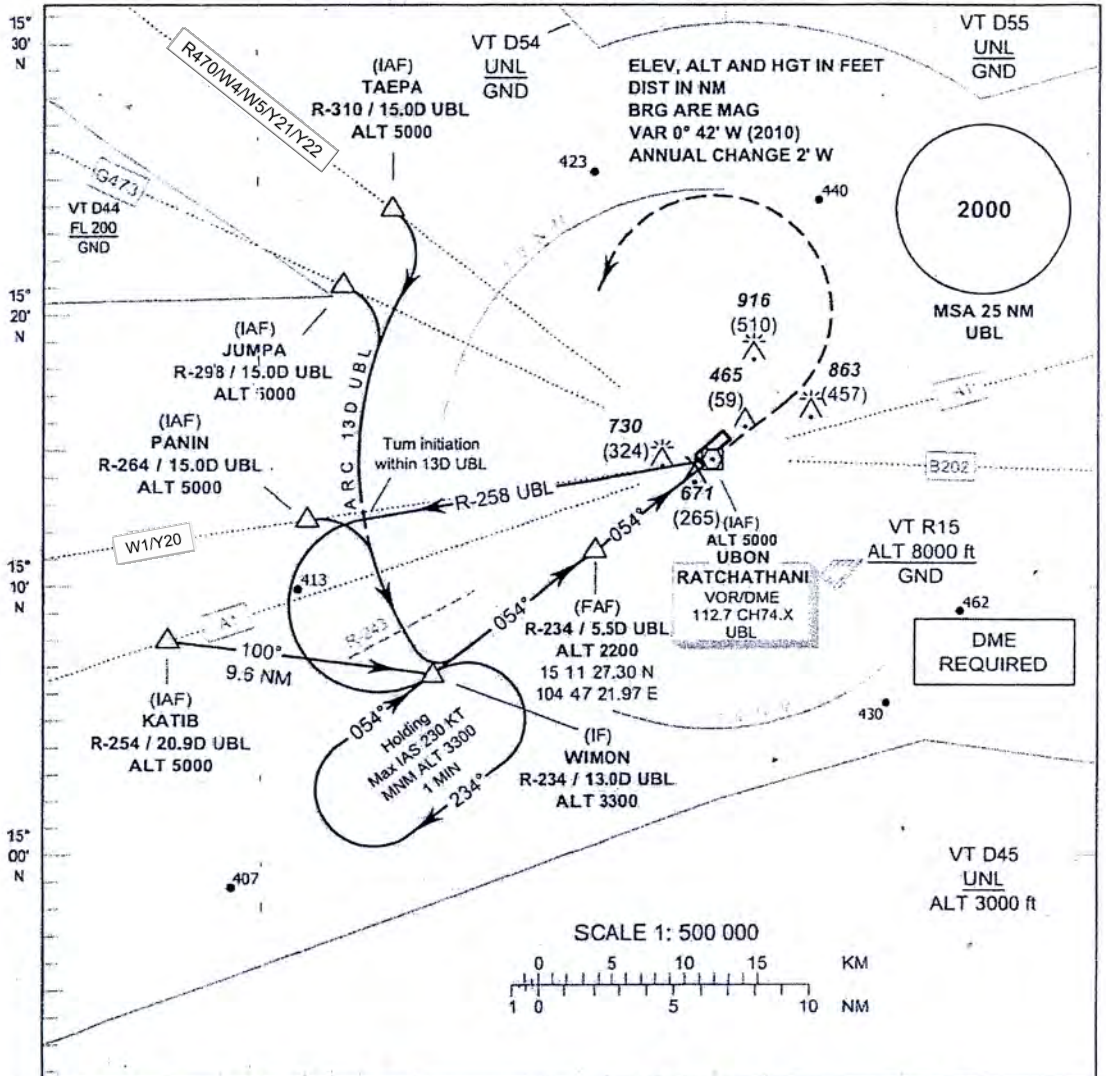


**INSTRUMENT
APPROACH
CHART - ICAO**

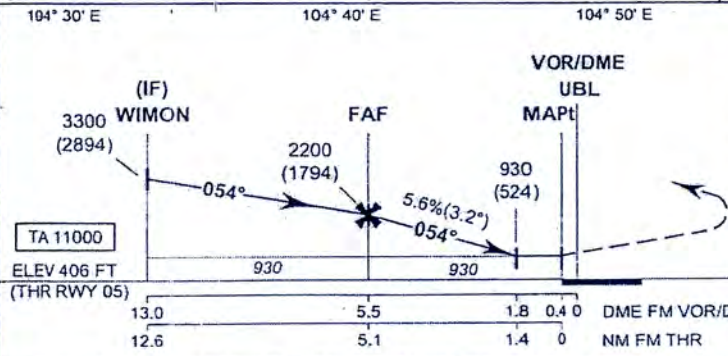
**AERODROME ELEV 406 FT
HEIGHTS RELATED TO
AERODROME ELEV**

APP : 123.5 , 257.8
TWR : 119.9 , 274.5
GND : 121.9 , 275.8

**UBON RATCHATHANI /
Ubun Ratchathani (VTUU)
VOR RWY05**



MISSED APPROACH:
No turn before MAPt.
Climb straight ahead to 1400 (994) FT then turn left to intercept R-234 UBL VOR then proceed to IF at 3300 (2894) FT and hold or as directed by ATC.
Descent gradient not coincident with PAPI (3.0%).



OCA/H	A	B	C	D	Distance (UBL)	FAF	5 D	4 D	3 D	2 D	1.8 D	
Straight - in Approach	930 (524)				Altitude (Height)	2200 (1794)	2020 (1614)	1680 (1274)	1340 (934)	1000 (594)	930 (524)	
					Ground speed (GS)	knot	100	120	140	160	180	200
	Circling (OCH AAL)				1350 (944)	Rate of descent	(ft/min)	565	680	795	905	1020

CHANGE:ROUTE Y20, Y21, Y22 ADDED.