

AERODROME GROUND MOVEMENT CHART-ICAO

**APRON ELEV
90 FT**

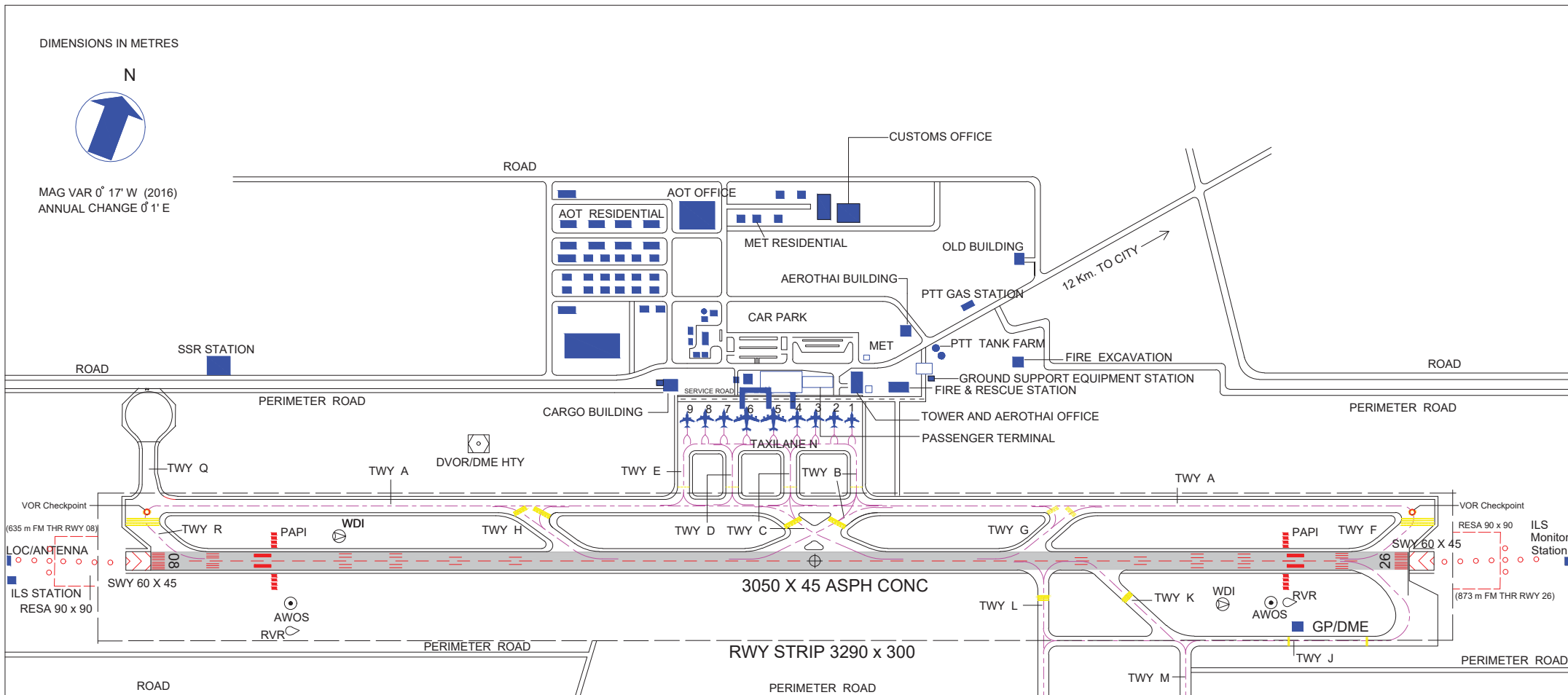
TWR : 118.1, 275.8
 APP : 126.7, 301.5
 GND : 121.9, 257.8
 EMERGENCY : 121.5, 243.0
 ATIS : 128.8

SONGKHLA / Hat Yai Intl

DIMENSIONS IN METRES



MAG VAR 0° 17' W (2016)
 ANNUAL CHANGE 0' 1" E



REMARKS

- SITE OF ARP : CENTRE LINE OF RUNWAY 1,600 m FROM THRESHOLD RUNWAY 08
- TAXIWAY WIDTH : A 23 m. B,C,D 26 m. E 30 m. F,R 27 m. G,H 24 m. , Q 30 m. TAXIWAY J,K,L,M FOR MILITARY USE
- CONCRETE / ASPHALT SURFACE , PCN 60/R/C/X/T , PCN 60/F/C/X/T
- APRON SURFACE / STRENGTH : CONCRETE / PCN 60/R/C/X/T
- AIRCRAFT STAND NR 1,9 FOR ACFT UP TO CODE C MAX WINGSPAN 29 M.
- AIRCRAFT STAND NR 2, 3, 4, 7, 8 FOR ACFT UP TO CODE C MAX WINGSPAN < 36 M.
- AIRCRAFT STAND NR 5 FOR ACFT UP TO CODE E MAX WINGSPAN < 65 M.
- AIRCRAFT STAND NR 6 FOR ACFT UP TO CODE E MAX WINGSPAN 64 M.
- AIRCRAFT STAND NR 4,5 and 6 PASSENGER-LOADING BRIDGES AND VDGS AVAILABLE
- TAXIWAY A AND J NOT AVAILABLE WHEN AIRCRAFT WITH CODE LETTER C, D OR E TAKE-OFF OR LANDING , DUE TO THE DISTANCE BETWEEN THE RUNWAY CENTRE LINE AND THE TAXIWAY CENTRE LINES ARE LESS THAN MINIMUM REQUIRED
- TAXILANE N NOT AVAILABLE FOR AIRCRAFT CODE E TAXI BEHIND AIRCRAFT STAND NR 5,6 WHEN AIRCRAFT CODE E PARKED AT STAND NR 5,6

LEGEND

AERODROME REFERENCE POINT	06 55 58 N 100 23 42 E	
BUILDING OR LARGE STRUCTURE		
TAXI ROUTES		
AIRCRAFT STAND AND IDENTIFICATION		
HOLDING POSITION		

SCALE 1 : 10 000

CHANGE : TWY I AMEND TO READ TWY R.