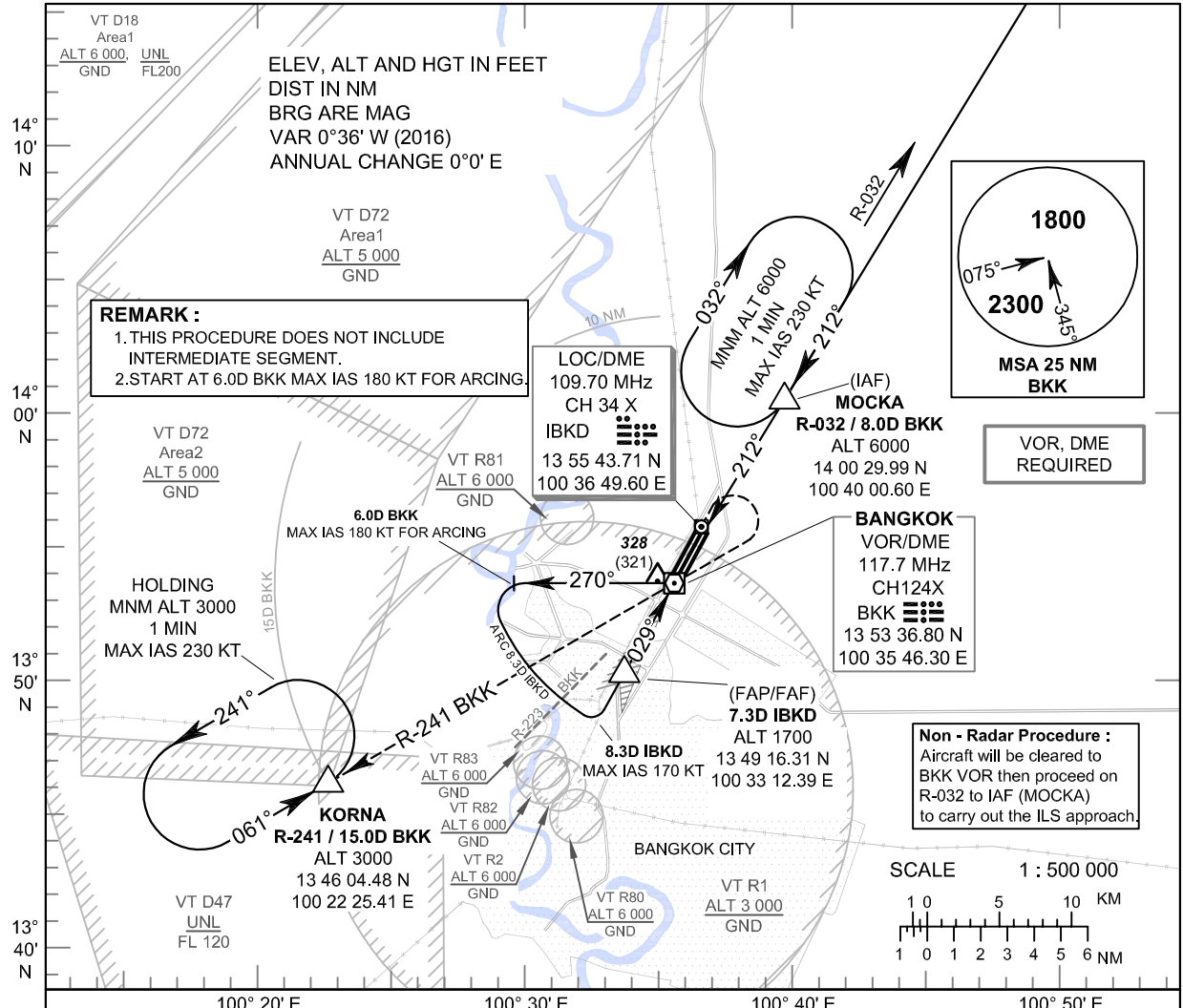


INSTRUMENT APPROACH CHART - ICAO **AERODROME ELEV 9 FT**
HEIGHTS RELATED TO
THR RWY03L - ELEV 7 FT

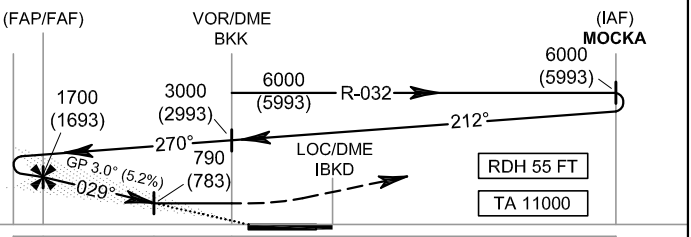
APP	: 119.1, 262.5
	: 119.4, 262.5
	: 120.3, 262.5
	: 128.95, 262.5
	: 122.35, 262.5
	: 124.35, 262.5
	: 125.2, 262.5
DAR	: 133.0, 262.5
TWR	: 118.1, 236.6
ATIS	: 126.4, 344.6

BANGKOK / Don Mueang Intl (VTBD)
ILS or LOC y RWY03L



CHANGE: CHART TITLE, CIRCLING ALT., OCA ALT. NON-RADAR INSTRUCTION.

MISSED APPROACH :
No turn before MAPt (for LOC only).
 Climb on track 029° direct to the LOC/DME then climb outbound on R-029 BKK VOR to 1500 FT then turn right to VOR/DME BKK and continue climb on R-241 BKK VOR to 15 DME BKK VOR FIX at 3000 FT and hold or as directed by ATC.



OCA/H		A	B	C	D	Distance (IBKD)	7 DME	6 DME	5 DME	4 DME	3.4 DME	
Straight - in Approach	CAT I	220 (213)				Altitude (Height)	1605 (1598)	1290 (1283)	975 (968)	660 (653)	470 (463)	
		790 (783)				Ground speed	100	120	140	160	180	200
LOC only		790 (783)				FAF-MAPt 3.9 NM (min:s)	2:20	1:57	1:40	1:28	1:18	1:10
Circling (OCH AAL)		800 (791)	1100 (1091)			Rate of descent (ft/min)	530	637	743	849	955	1061