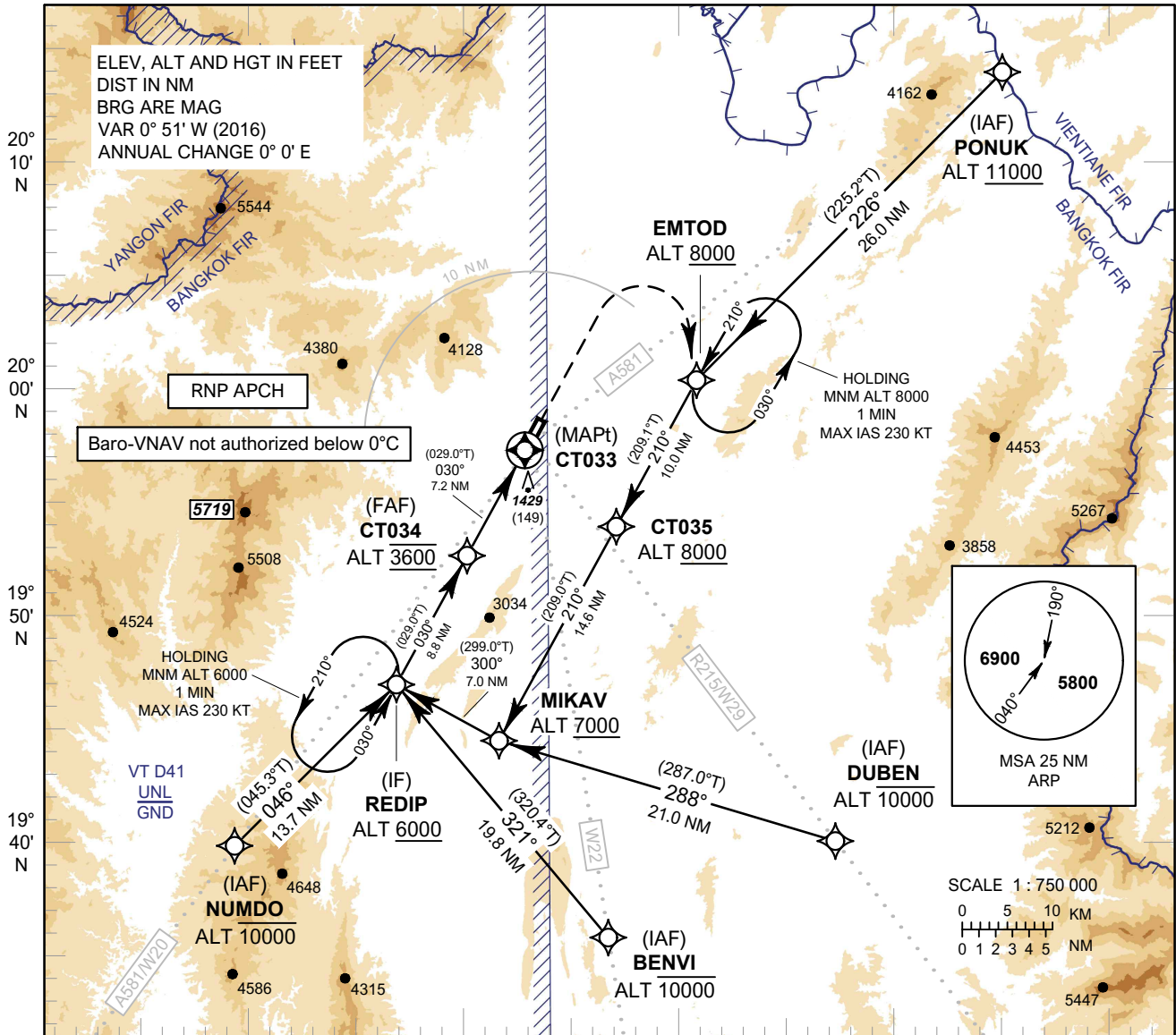


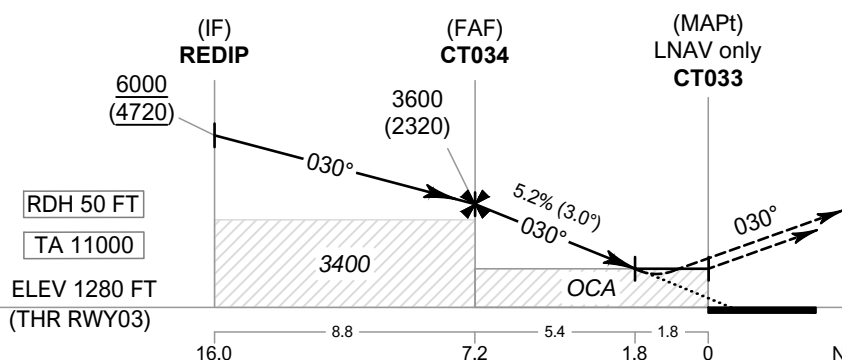
**INSTRUMENT APPROACH CHART - ICAO**  
**AERODROME ELEV 1280 FT**  
 HEIGHTS RELATED TO THR RWY03 - ELEV 1280 FT

APP : 120.05 , 257.8  
 TWR : 118.4 , 236.6  
 ATIS : 127.85

**CHIANG RAI / Mae Fah Luang-Chiang Rai Intl (VTCT)**  
**RNP RWY03**



099° 40' E      099° 50' E      100° 00' E      100° 10' E      100° 20' E



**MISSED APPROACH :**  
**No turn before MAPt.**  
 Climb on track 030° to 4500 FT, then turn right direct to EMTOD at minimum 8000 FT and hold or as directed by ATC.

OCA/H	A	B	C	D	NM to NEXT WPT	FAF	7 NM	6 NM	5 NM	4 NM	3 NM	2 NM	1.8 NM
LNAV / VNAV	1900 (620)				Altitude (Height)	3600 (2320)	3540 (2260)	3225 (1945)	2910 (1630)	2595 (1315)	2280 (1000)	1960 (680)	1900 (620)
LNAV					Ground Speed	knot	70	90	100	120	140	160	
Circling (OCH AAL)	1900 (620)		3070 (1790)		Rate of Descent FAF-MAPt 5.2%	ft/min	369	474	527	632	737	843	

**NOTE :**

- OCA/H 1600 (320) FT of LNAV/VNAV procedure** can be achieved for all aircraft categories which can commence a missed approach climb gradient of **3.5% (213 FT/NM)** until after turn.
- OCA/H 1680 (400) FT of LNAV procedure** can be achieved for all aircraft categories which can commence a missed approach climb gradient of **3.5% (213 FT/NM)** until after turn.

CHANGE: REVISED CHART. INTERMEDIATE APPROACH SEGMENT - NO HORIZONTAL DISTANCE 1.5 NM DUE TO TERRAIN RESTRICTIONS.