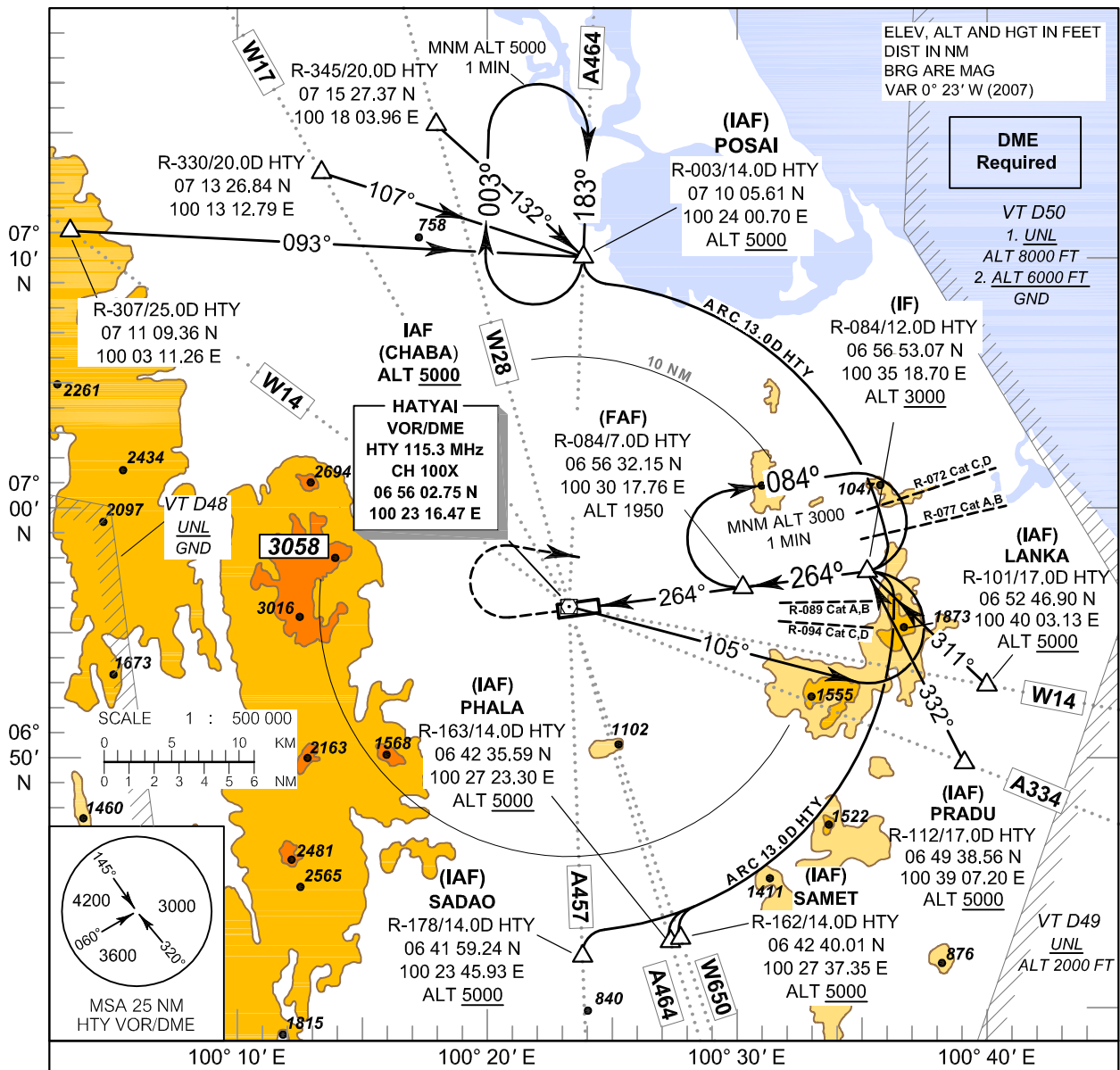


INSTRUMENT **AERODROME ELEV 90 FT**
 APPROACH **HEIGHTS RELATED TO**
 CHART - ICAO **THR RWY26 - ELEV 58 FT**

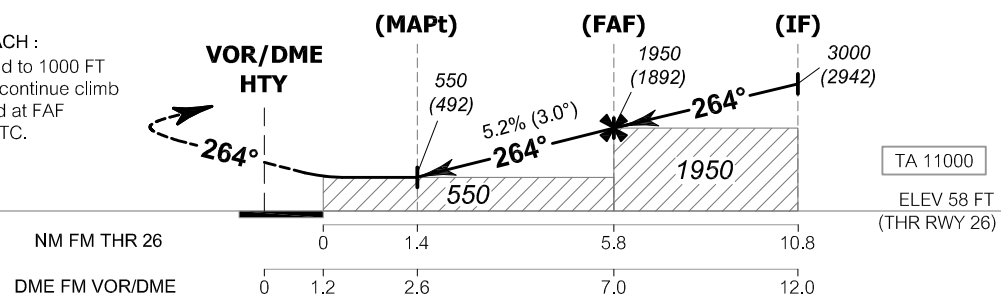
APP : 126.7, 301.5
 TWR : 118.1, 275.8
 GND : 121.9, 257.8
 ATIS : 128.8

SONGKHLA / Hat Yai INTL (VTSS)

VOR RWY26



MISSED APPROACH :
 Climb straight ahead to 1000 FT
 then turn right and continue climb
 to 3000 FT and hold at FAF
 or as directed by ATC.



CHANGE : APP FREQUENCIES, TWR FREQUENCIES, ADDED GND FREQUENCIES.

OCA/H	A	B	C	D	Distance (HTY)	2.6D	3D	4D	5D	6D	FAF	
Straight - in approach	550 (492)				Altitude (Height)	550 (492)	680 (622)	995 (937)	1310 (1252)	1625 (1567)	1950 (1892)	
					Ground speed	knot	70	90	100	120	140	160
Circling (OCH AAL)	550 (460)	680 (590)	780 (690)	780 (690)	Rate of descent	(ft/min)	369	474	527	632	737	843