

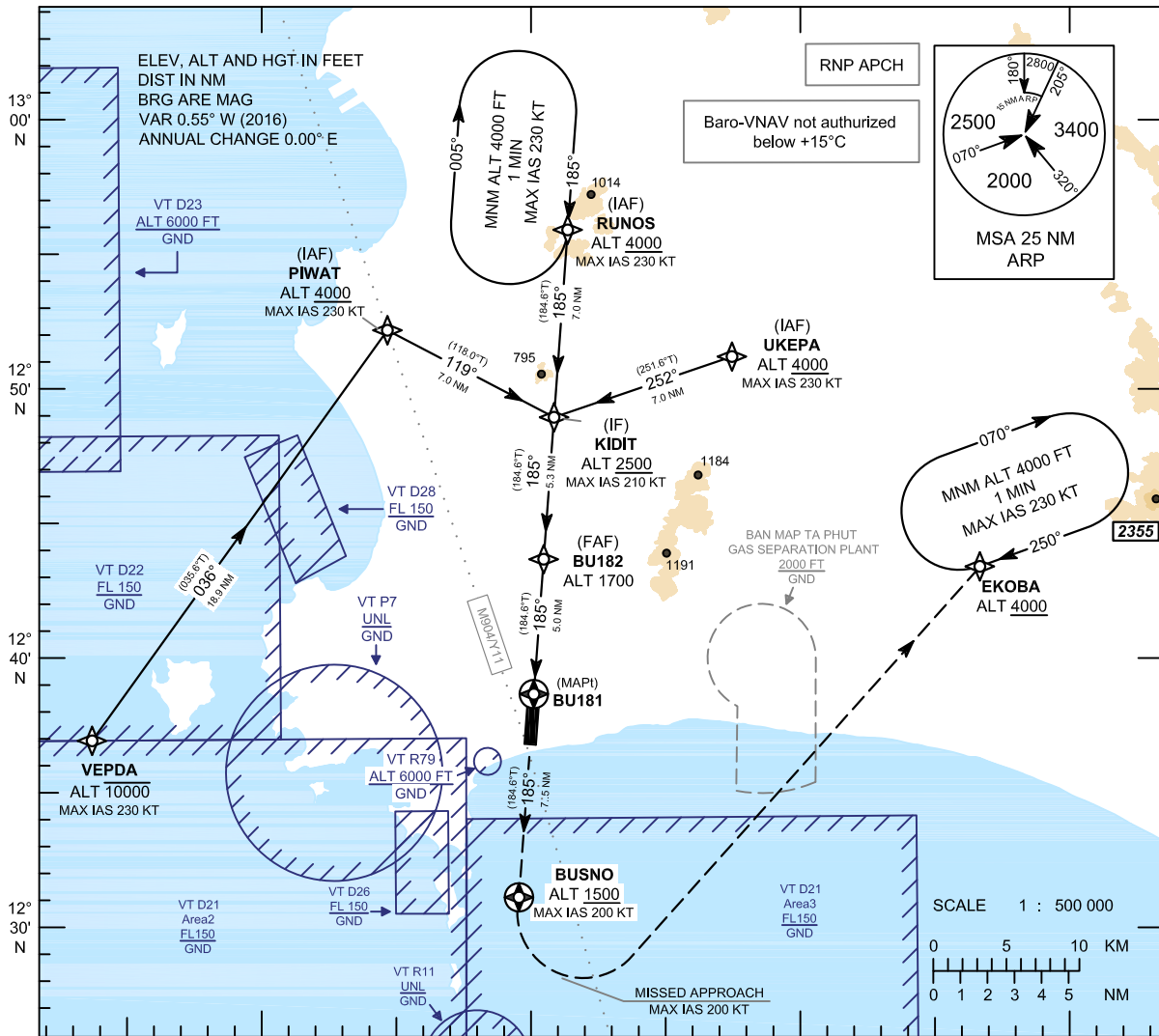
**INSTRUMENT  
APPROACH  
CHART - ICAO**

**AERODROME ELEV 59 FT**  
HEIGHTS RELATED TO  
THR RWY18 - ELEV 59 FT

APP : 119.7 , 134.5  
238.3 , 273.3  
TWR : 118.3 , 227.0  
GND : 121.9 , 275.8  
ATIS : 127.2

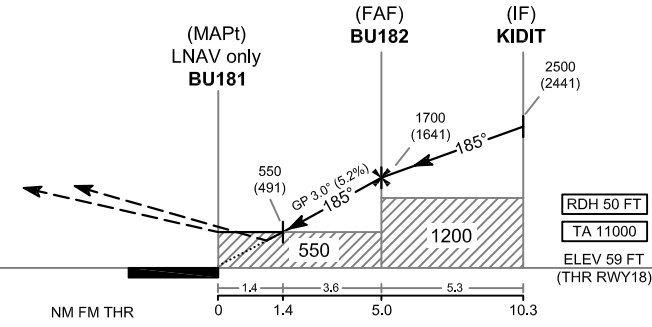
**RAYONG / U-TAPAO RAYONG  
PATTAYA INTL (VTBU)**

**RNP RWY18**



**CAUTION : Aircraft shall avoid entering VT R11**

**MISSED APPROACH :**  
**No turn before MAPt.**  
**Speed restricted to**  
**MAX IAS 200 KT until after turn.**  
climb on track 185° to BUSNO at or above  
1500 FT, After BUSNO turn left direct to  
EKOKBA at ALT 4000FT or above and hold  
or as directed by ATC.



CHANGE/REVISE CHART.

OCA/H	A	B	C	D	NM to NEXT WPT	1.4 NM	2 NM	3 NM	4 NM	5 NM	FAF
LNAV/VNAV	410 (351)				Altitude (Height)	550 (491)	680 (621)	995 (936)	1310 (1251)	1700 (1641)	
LNAV	550 (491)				Ground speed	knot	70	90	100	120	140
Circling (OCH AAL)	1200 (1141)	1450 (1391)			Rate of descent (5.2%)	ft/min	369	474	527	632	737