

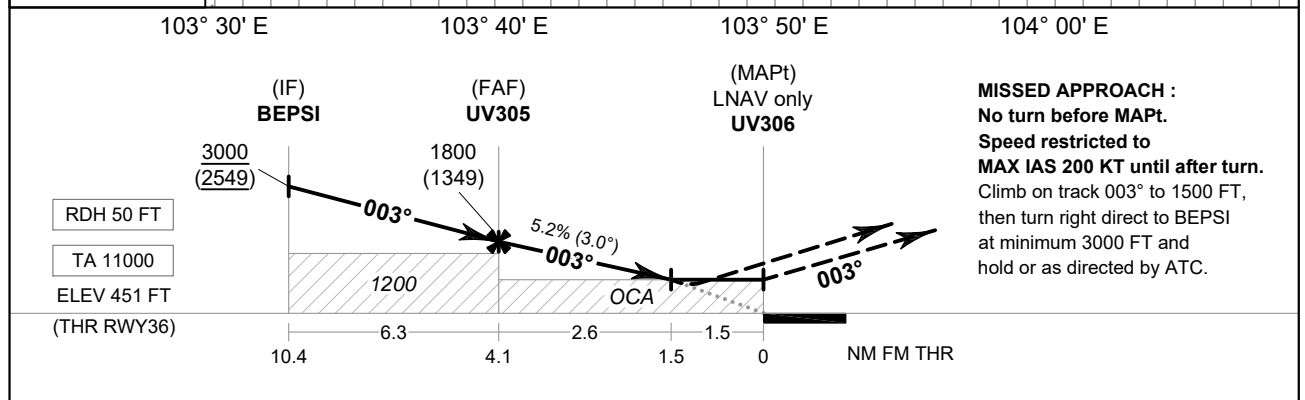
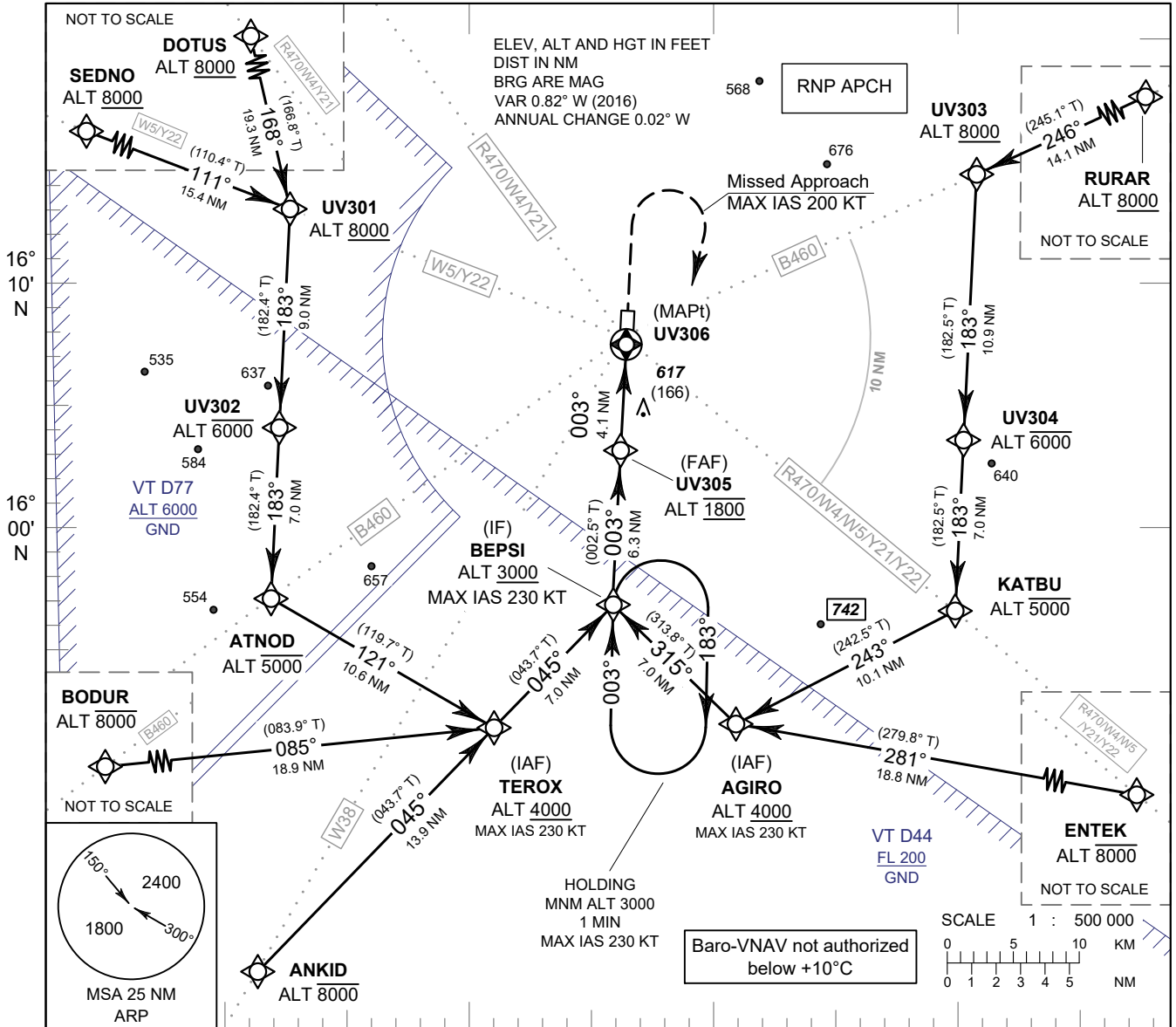
**INSTRUMENT  
APPROACH  
CHART - ICAO**

**AERODROME ELEV 451 FT  
HEIGHTS RELATED TO  
THR RWY36 - ELEV 451 FT**

APP : 125.4  
TWR : 119.75 , 236.6  
ATIS : 128.275

**ROI ET / Roi Et (VTUV)**

**RNP RWY36**



**MISSED APPROACH :**  
No turn before MAPt.  
Speed restricted to  
MAX IAS 200 KT until after turn.  
Climb on track 003° to 1500 FT,  
then turn right direct to BEPSI  
at minimum 3000 FT and  
hold or as directed by ATC.

OCA/H	A	B	C	D	NM to NEXT WPT	FAF	4 NM	3 NM	2 NM	1.5 NM		
LNVA/VNAV	800 (349)				Altitude (Height)	1800 (1349)	1765 (1314)	1450 (999)	1135 (684)	970 (519)		
LNVA	970 (519)				Ground Speed	knot	70	90	100	120	140	160
Circling (OCH AAL)	1200 (749)				Rate of Descent	ft/min	369	474	527	632	737	843

CHANGE: ROUTE Y21, Y22 ADDED.