

**STANDARD DEPARTURE CHART -
INSTRUMENT (SID) - ICAO**

TRANSITION ALTITUDE
11000 FT

APP : 125.4
TWR : 119.75 , 236.6
ATIS : 128.275

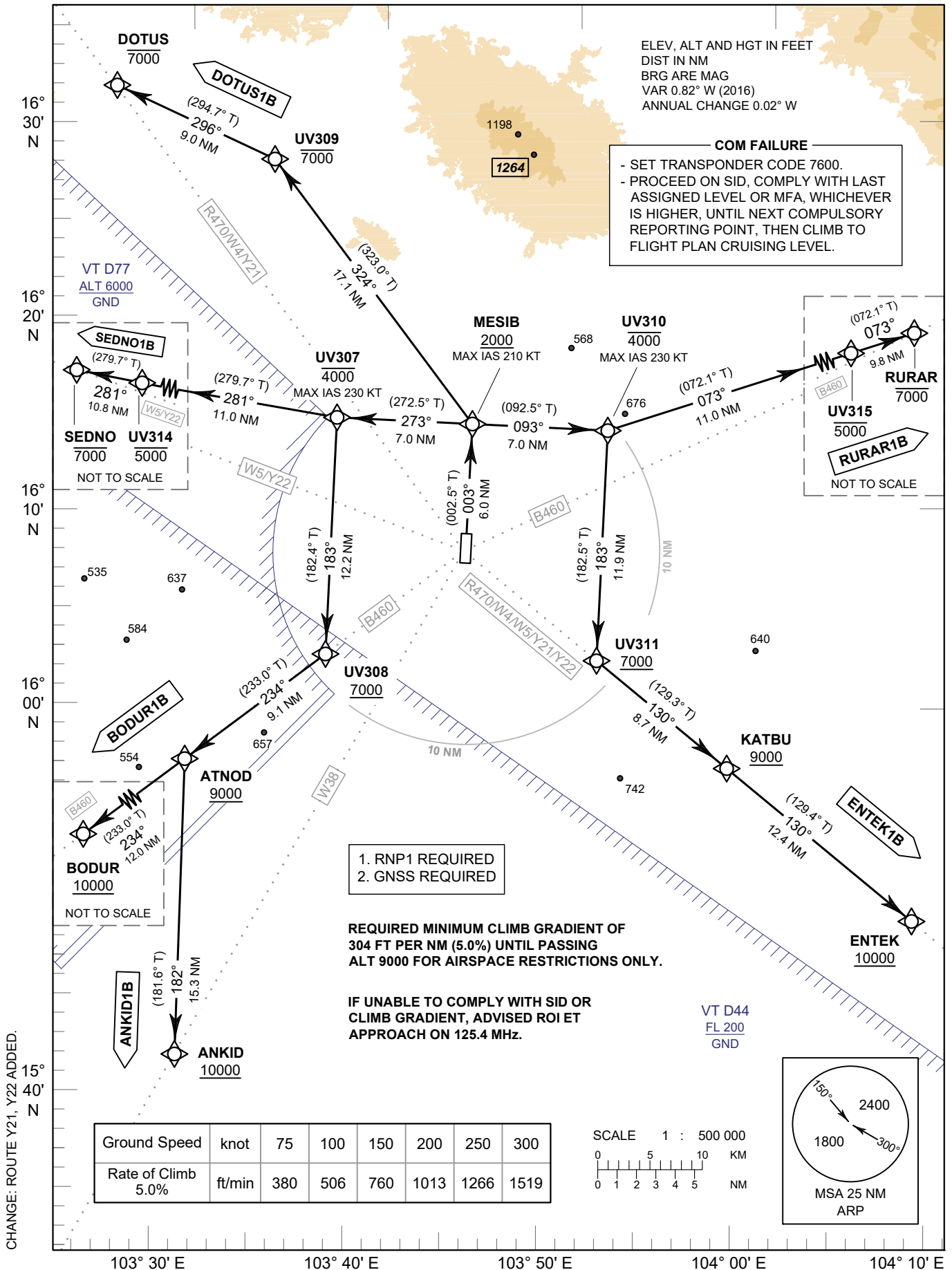
**ROI ET / Roi Et (VTUV)
RNAV RWY36**

ANKID1B BODUR1B DOTUS1B
ENTEK1B RURAR1B SEDNO1B

ELEV, ALT AND HGT IN FEET
DIST IN NM
BRG ARE MAG
VAR 0.82° W (2016)
ANNUAL CHANGE 0.02° W

COM FAILURE

- SET TRANSPONDER CODE 7600.
- PROCEED ON SID, COMPLY WITH LAST ASSIGNED LEVEL OR MFA, WHICHEVER IS HIGHER, UNTIL NEXT COMPULSORY REPORTING POINT, THEN CLIMB TO FLIGHT PLAN CRUISING LEVEL.



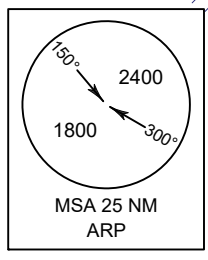
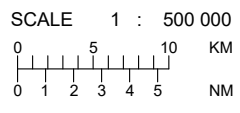
1. RNP1 REQUIRED
2. GNSS REQUIRED

**REQUIRED MINIMUM CLIMB GRADIENT OF
304 FT PER NM (5.0%) UNTIL PASSING
ALT 9000 FOR AIRSPACE RESTRICTIONS ONLY.**

**IF UNABLE TO COMPLY WITH SID OR
CLIMB GRADIENT, ADVISED ROI ET
APPROACH ON 125.4 MHz.**

VT D44
FL 200
GND

Ground Speed	knot	75	100	150	200	250	300
Rate of Climb	ft/min	380	506	760	1013	1266	1519



CHANGE: ROUTE Y21, Y22 ADDED.