

**STANDARD ARRIVAL CHART -  
INSTRUMENT (STAR) - ICAO**

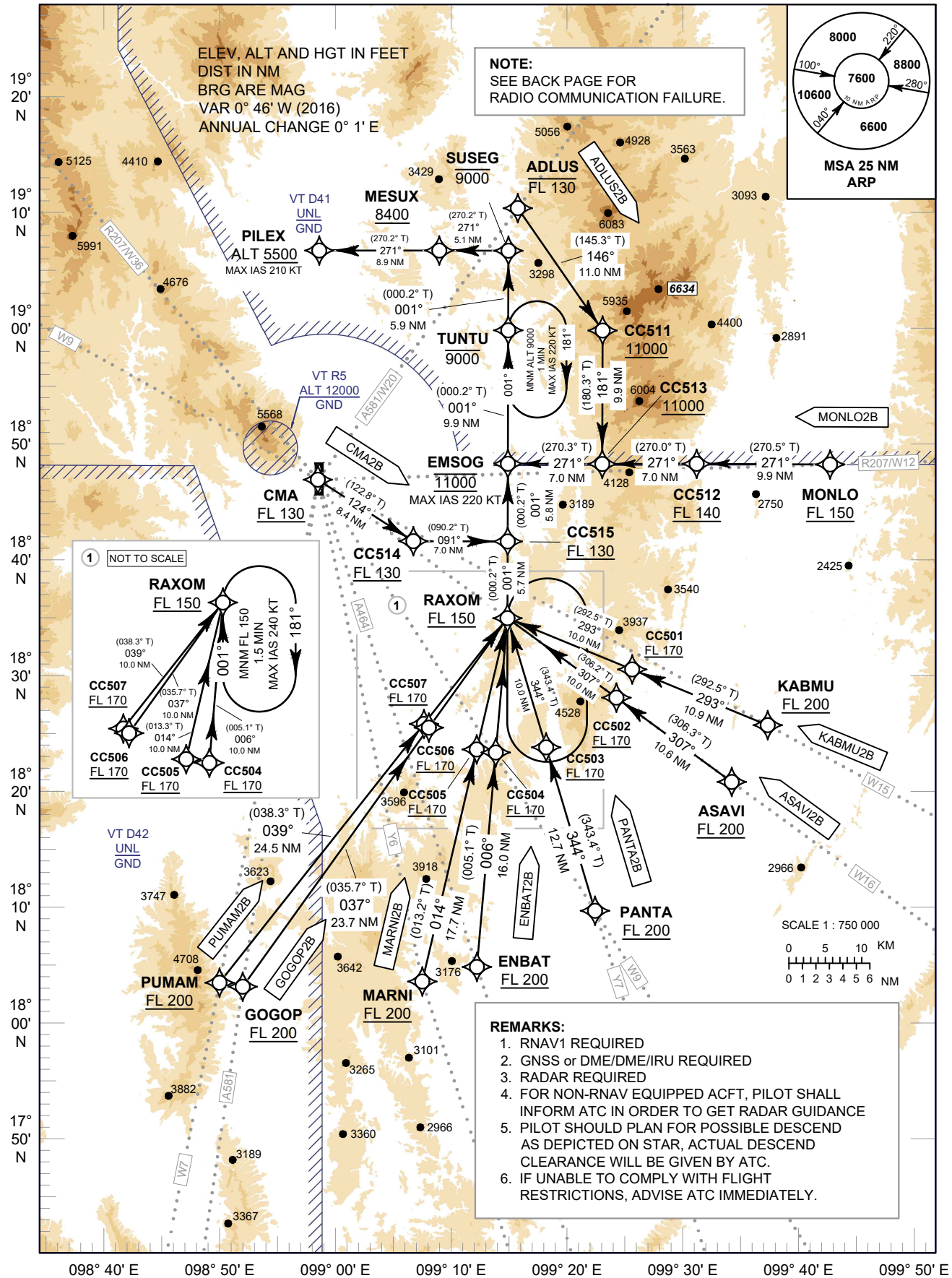
TRANSITION ALTITUDE  
11000 FT

APP : 129.6 , 305.4  
TWR : 118.1 , 236.6  
GND : 121.9 , 275.8  
ATIS : 127.2 , 301.5

**CHIANG MAI / Chiang Mai Intl (VTCC)**

**RNAV RWY18**

ADLUS2B ASAVI2B CMA2B ENBAT2B GOGOP2B  
KABMU2B MARNI2B MONLO2B PANTA2B  
PUMAM2B



CHANGE: NEW CHART.