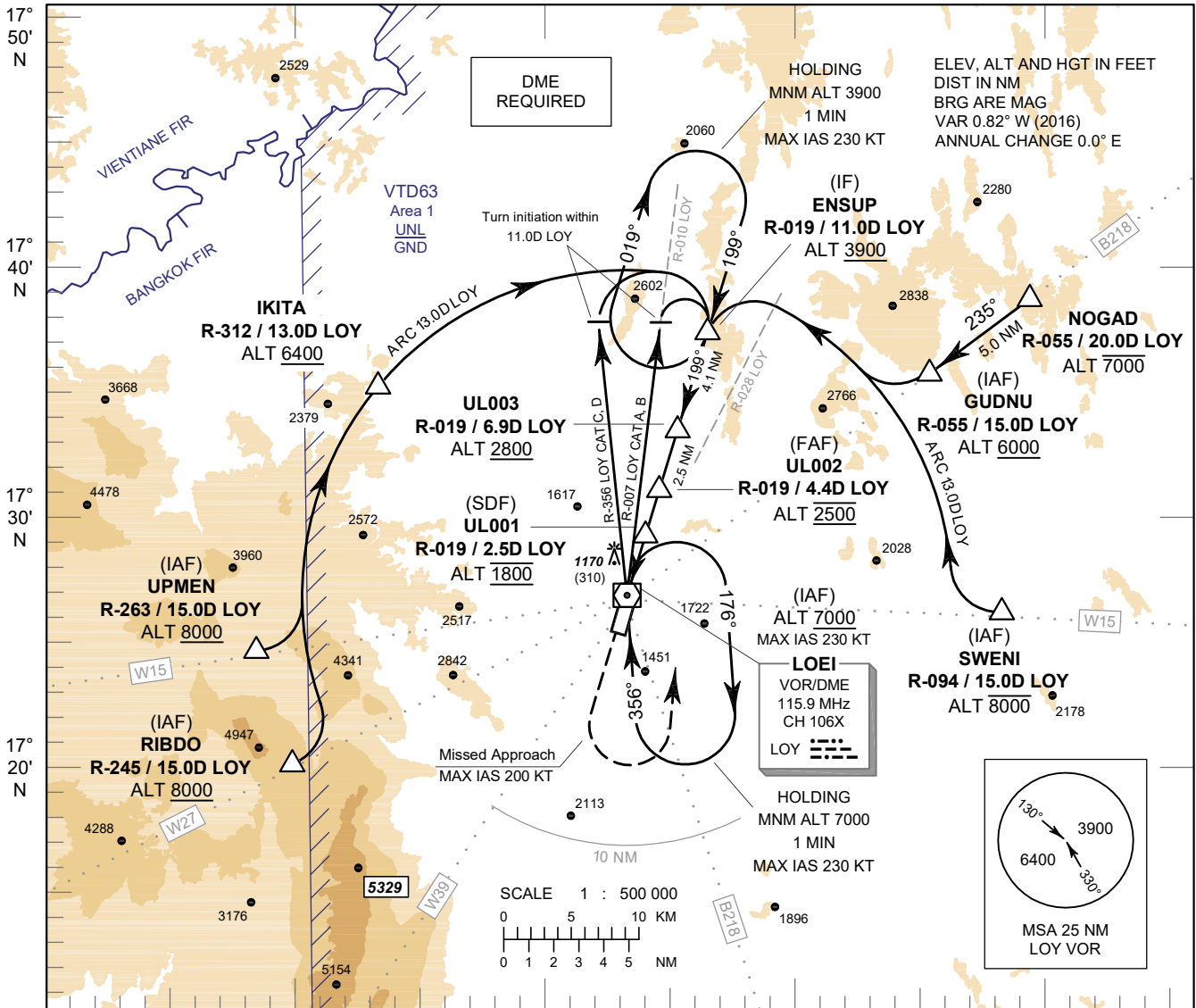


**INSTRUMENT  
APPROACH  
CHART - ICAO**

**AERODROME ELEV 860 FT  
HEIGHT RELATED TO  
AERODROME ELEV**

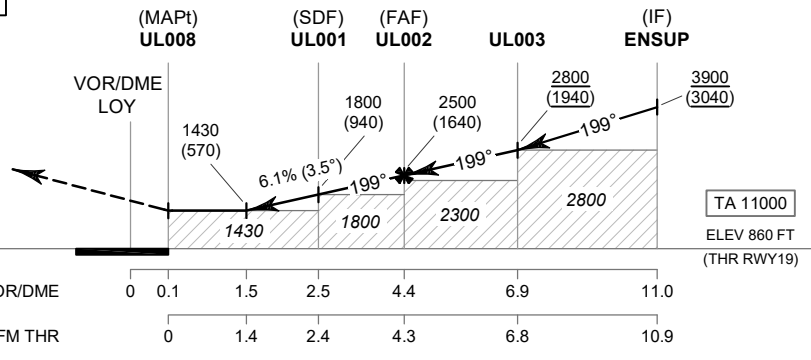
APP : 122.55  
TWR : 118.35, 236.6  
ATIS : 126.25

**LOEI / Loei (VTUL)  
VOR RWY19**



**MISSED APPROACH :**

**No turn before MAPt.**  
**Speed restricted to MAX IAS 200 KT until after turn.**  
Climb straight ahead to 2000 FT, then turn left to intercept outbound R-019 LOY VOR and continue climb to ENSUP at minimum 3900 FT and hold or as directed by ATC.



CHANGE : MAPt NAME, SDF ALTITUDE.