

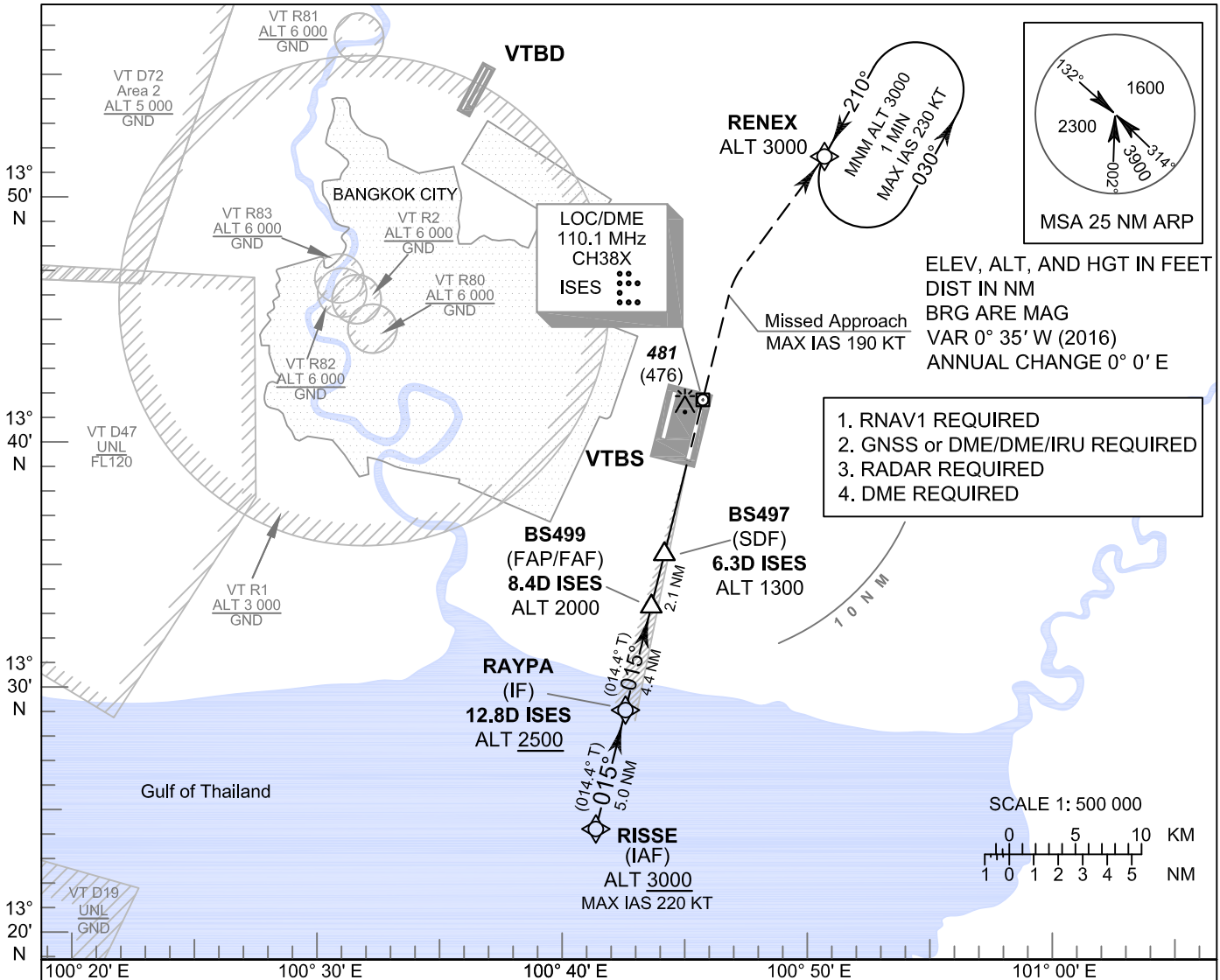
**INSTRUMENT  
APPROACH  
CHART - ICAO**

**AERODROME ELEV 5 FT  
HEIGHTS RELATED TO  
THR RWY01R - ELEV 5 FT**

APP	: 119.1, 262.5
	: 120.3, 262.5
	: 128.95, 262.5
	: 122.35, 262.5
	: 124.35, 262.5
	: 125.2, 262.5
ARR	: 121.1
	: 126.3
TWR	: 118.2, 274.5
	: 119.0
ARR ATIS	: 133.6, 278.6

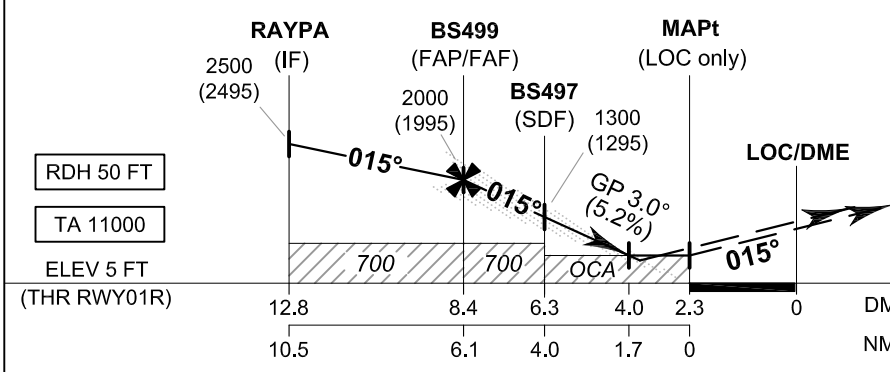
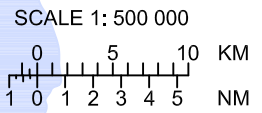
**BANGKOK / Suvarnabhumi Intl (VTBS)**

**ILS or LOC z RWY01R  
CAT II**



1. RNAV1 REQUIRED
2. GNSS or DME/DME/IRU REQUIRED
3. RADAR REQUIRED
4. DME REQUIRED

ELEV, ALT, AND HGT IN FEET  
DIST IN NM  
BRG ARE MAG  
VAR 0° 35' W (2016)  
ANNUAL CHANGE 0° 0' E



**MISSED APPROACH:**  
No turn before MAPt (for LOC only).  
Speed restricted to  
**MAX IAS 190 KT** until after turn.  
Climb to 1000 FT on track 015°, then climbing right turn direct to RENEX at 3000 FT and hold or as directed by ATC.  
(If unable to reach 3000 FT at RENEX, continue climb in the holding pattern.)

OCA/H		A	B	C	D	GS OUT	Distance (ISES)	FAF	8 D	7 D	6 D	5 D	4 D
Straight-in Approach	CAT I	205 (200)					Distance (ISES)	2000	1855	1540	1225	910	600
	CAT II	105 (100)				Altitude (Height)		(1995)	(1850)	(1535)	(1220)	(905)	(595)
LOC only		600 (595)				Ground speed	knot	70	90	100	120	140	160
Circling (OCH AAL)		800 (795)	900 (895)			Rate of descent (5.2%)	ft/min	369	474	527	632	737	843

CHANGE: APP FREQ. ARR ATIS ADDED.