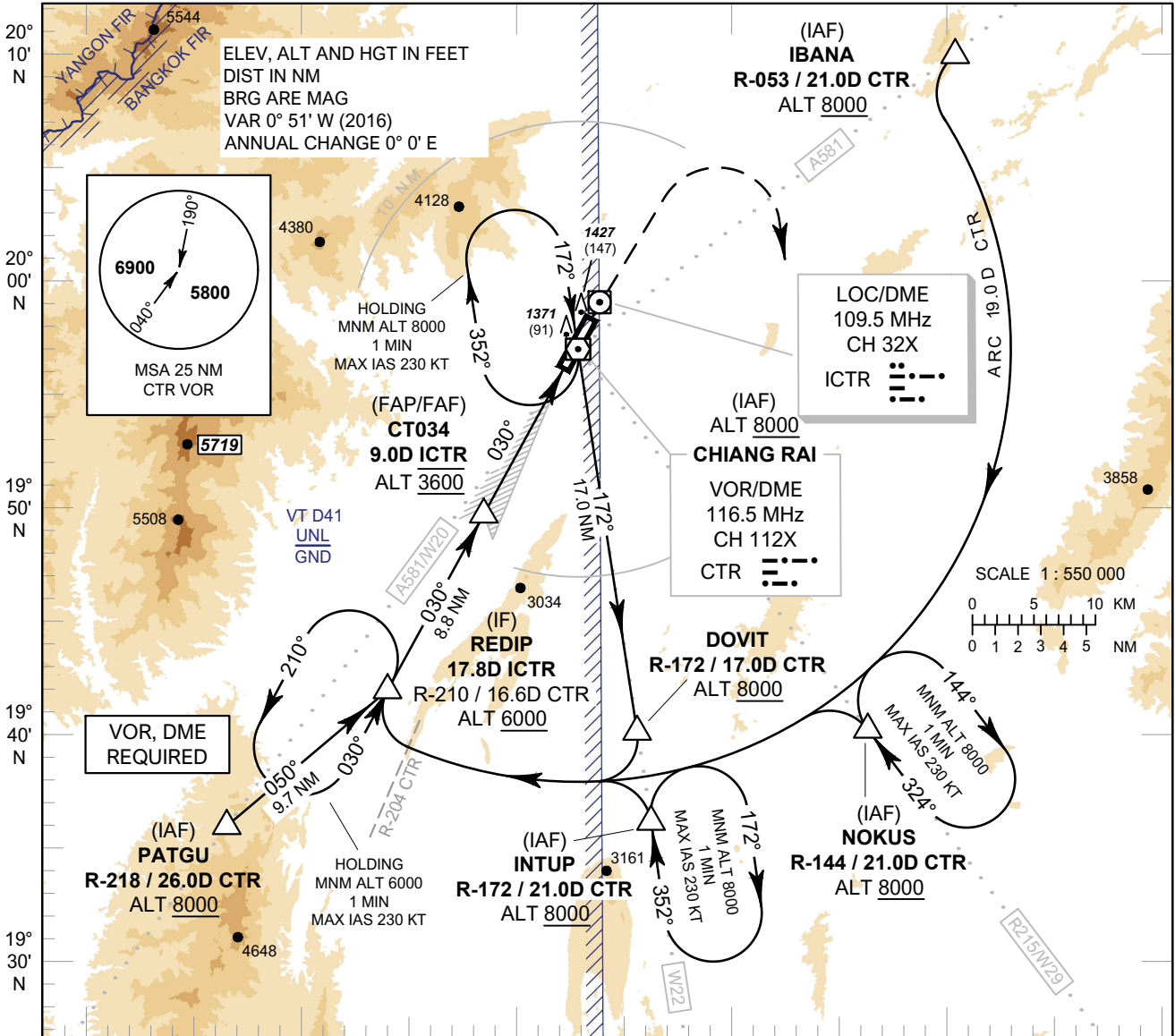


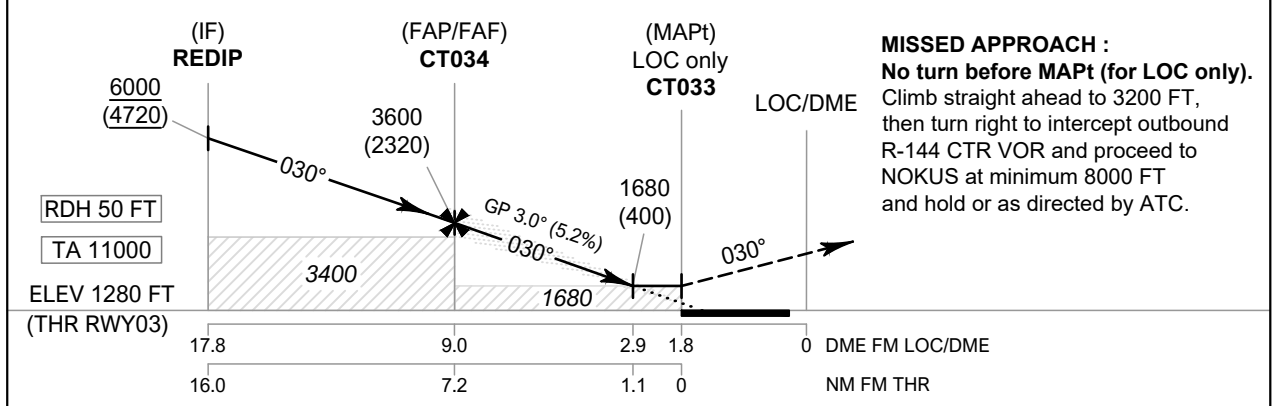
INSTRUMENT APPROACH CHART - ICAO
AERODROME ELEV 1280 FT
 HEIGHTS RELATED TO THR RWY03 - ELEV 1280 FT

APP : 120.05 , 257.8
 TWR : 118.4 , 236.6
 ATIS : 127.85

CHIANG RAI / Mae Fah Luang-Chiang Rai Intl (VTCT)
 ILS or LOC y RWY03



099° 30' E 099° 40' E 099° 50' E 100° 00' E 100° 10' E 100° 20' E



MISSED APPROACH :
 No turn before MAPt (for LOC only).
 Climb straight ahead to 3200 FT,
 then turn right to intercept outbound
 R-144 CTR VOR and proceed to
 NOKUS at minimum 8000 FT
 and hold or as directed by ATC.

OCA/H		A	B	C	D	GS OUT	Distance (ICTR)	FAF	8 D	7 D	6 D	5 D	4 D	3 D	2.9 D
Straight-in Approach	CAT I	1480 (200)						Altitude (Height)	3600 (2320)	3290 (2010)	2975 (1695)	2655 (1375)	2340 (1060)	2025 (745)	1710 (430)
LOC only		1680 (400)					Ground Speed	knot		70	90	100	120	140	160
Circling (OCH AAL)		1900 (620)	3070 (1790)				Rate of Descent	ft/min		369	474	527	632	737	843

CHANGE: CTR VOR HOLDING MNM ALT.
 INTERMEDIATE APPROACH SEGMENT - NO HORIZONTAL DISTANCE 1.5 NM
 DUE TO TERRAIN RESTRICTIONS.