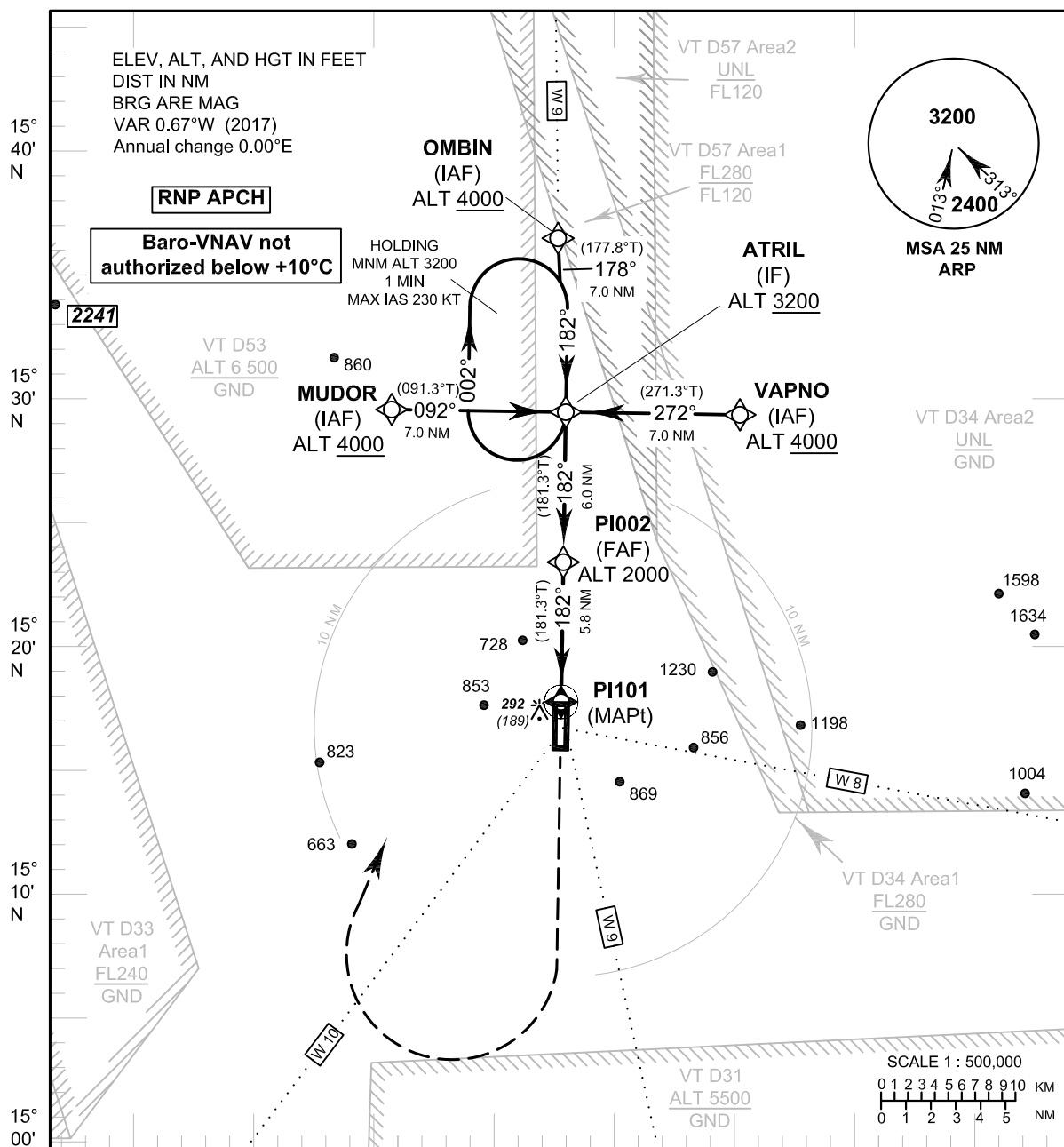


**INSTRUMENT AERODROME ELEV 103 FT**  
**APPROACH HEIGHTS RELATED TO**  
**CHART-ICAO THR RWY18 - ELEV 103 FT**

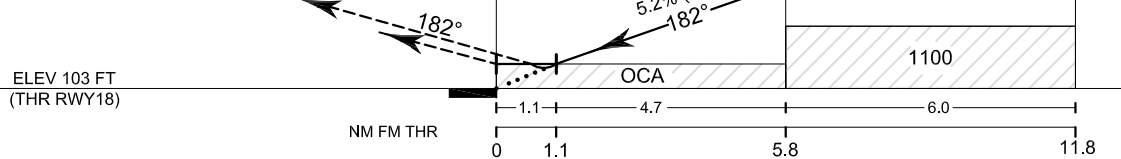
APP : 124.0, 325.0  
 TWR : 133.25, 241.5  
 GND : 121.75, 257.8

**NAKHON SAWAN/Takhli (VTPI)**  
**RNAV (GNSS) RWY18**



**TA 11 000** **RDH 50 FT**

**Missed Approach :**  
**No turn before MAPt.**  
 Climb on track 182° to 3000 FT,  
 then turn right direct to IF at 3200 FT  
 and hold as directed by ATC.



OCA/H	A	B	C	D	NM to NEXT WPT	Altitude (Height)					FAF		
						1.1 NM	2 NM	3 NM	4 NM	5 NM			
LNAV/VNAV		430 (327)				490 (387)	785 (682)	1100 (997)	1415 (1312)	1735 (1632)	2000 (1897)		
LNAV		490 (387)				Ground Speed	knot	70	90	100	120	140	160
Circling (OCH AAL)		1380 (1277)				Rate of descent FAF-MAPt (5.2%)	ft/min	369	474	527	632	737	843

CHANGE: PROFILE VIEW REVISED.