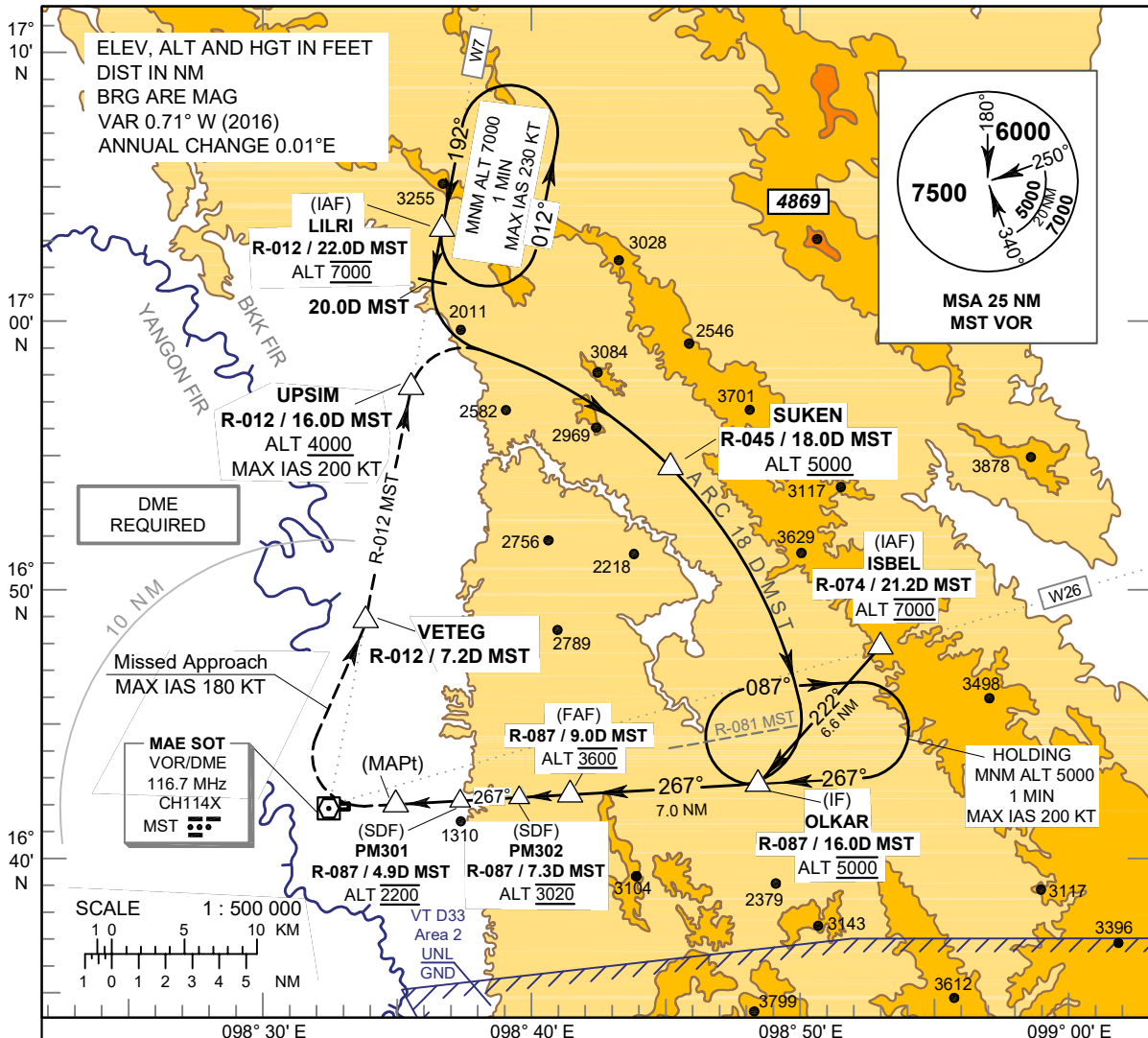


INSTRUMENT APPROACH CHART - ICAO

AERODROME ELEV 690 FT
 HEIGHTS RELATED TO THR RWY27 - ELEV 676 FT

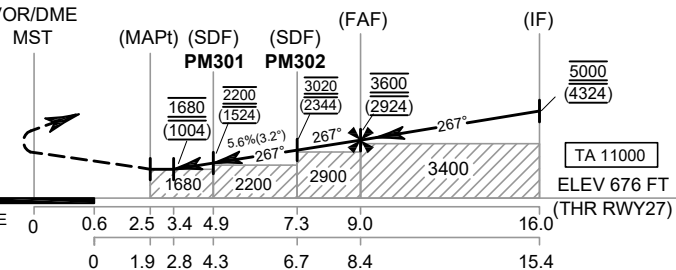
APP : 120.65 MHz
 TWR : 118.35 , 236.6 MHz
 ATIS : 316.0 KHz

TAK / Mae Sot (VTPM)
VOR RWY27



**CAUTION : 1. Descent gradient not coincident with PAPI
 2. Missed approach procedure shall be within BKK FIR only**

MISSED APPROACH :
No turn before MAPt.
Speed restricted to MAX IAS 180 KT until after turn.
 At MAPt, turn right climb to intercept outbound R-012 MST VOR at VETEG, then proceed on R-012 MST VOR to UPSIM and follow ARC 18 D MST to SUKEN, then to OLKAR at 5000 FT and hold or as directed by ATC.



CHANGE NEW PROCEDURES.

OCA/H	A	B	C	Distance (MST)	3.4D	4 D	PM301	6 D	PM302	8 D	FAF	
Straight-in Approach	1680 (1004)			Altitude (Height)	1680 (1004)	1880 (1204)	2200 (1524)	2565 (1889)	3020 (2344)	3245 (2569)	3600 (2924)	
				Ground speed	knot		70	90	100	120	140	160
Circling (OCH AAL)	NOT AUTHORIZED			Rate of descent (5.6%)	ft/min		397	510	567	681	794	907