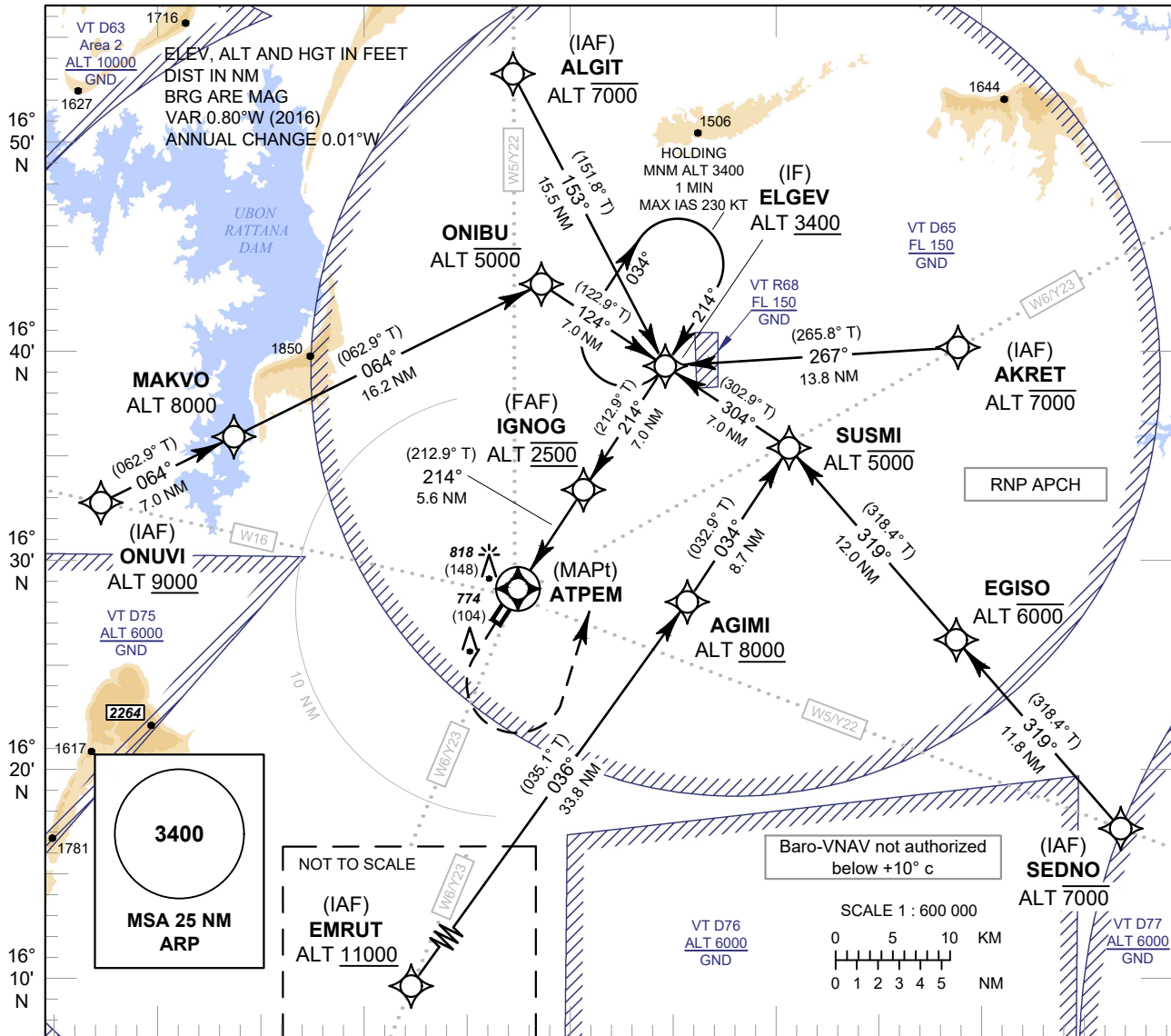


**INSTRUMENT  
APPROACH  
CHART - ICAO**

**AERODROME ELEV 670 FT  
HEIGHTS RELATED TO  
THR RWY21 - ELEV 670 FT**

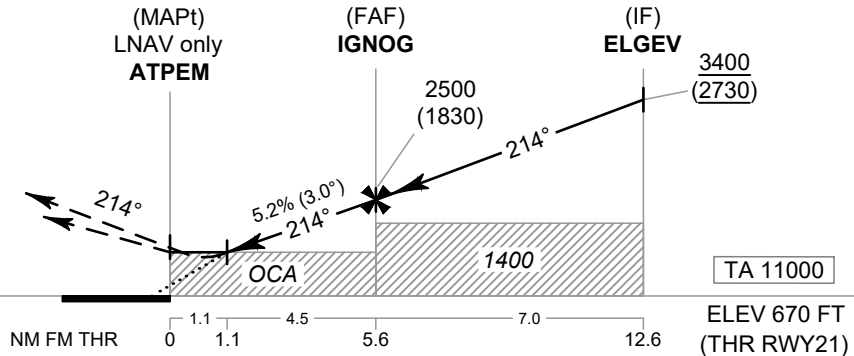
APP : 123.4 , 240.0  
TWR : 122.25 , 236.6  
GND : 121.9  
ATIS : 126.85

**KHON KAEN /  
Khon Kaen (VTUK)  
RNP RWY21**



**MISSED APPROACH :**  
**No turn before MAPt.**

Climb on track 214° to 1500 FT,  
then turn left direct to ELGEV  
at minimum 3400 FT and hold or  
as directed by ATC.



OCA/H	A	B	C	D	NM to NEXT WPT	1.1 NM	2 NM	3 NM	4 NM	5 NM	FAF	
LNAV / VNAV	1000 (330)				Altitude (Height)	1070 (400)	1350 (680)	1665 (995)	1985 (1315)	2300 (1630)	2500 (1830)	
LNAV	1070 (400)				Ground Speed	knot	70	90	100	120	140	160
Circling (OCH AAL)	1500 (830)				Rate of Descent 5.2%	ft/min	369	474	527	632	737	843

CHANGE: ROUTE Y22, Y23 ADDED.