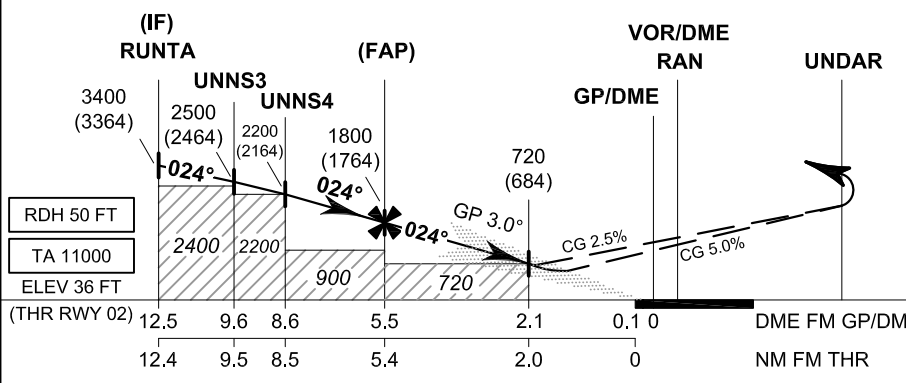
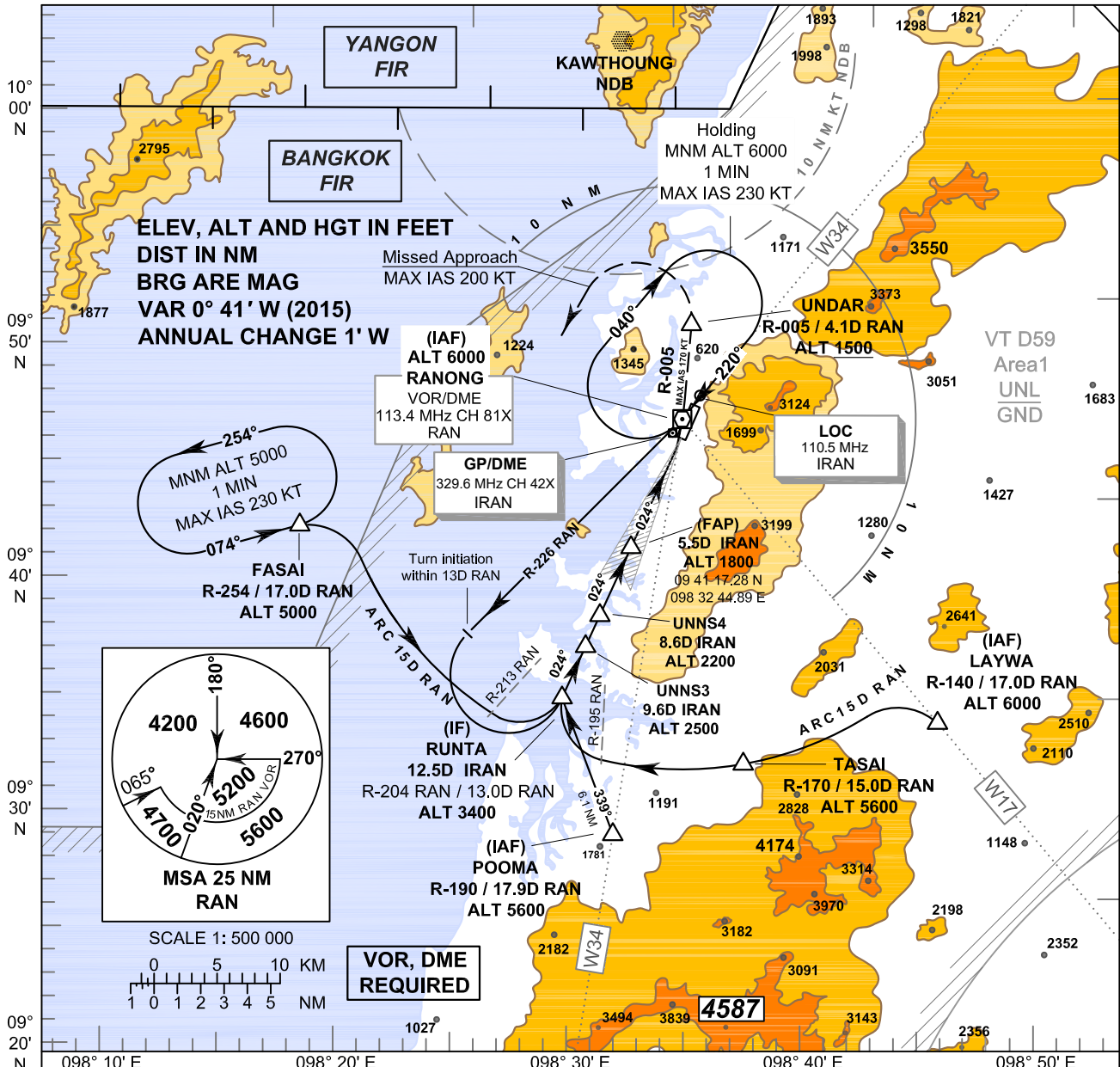


**INSTRUMENT APPROACH CHART - ICAO**

**AERODROME ELEV 57 FT  
HEIGHTS RELATED TO THR RWY 02 - ELEV 36 FT**

APP : 125.1  
TWR : 122.25 , 236.6  
ATIS : 126.475

**RANONG / Ranong (VTSR)  
ILS RWY02**



**MISSED APPROACH:**  
Speed restricted to MAX IAS 170 KT until UNNDAR and 200 KT until after turn.  
At OCA, turn left climb to intercept R-005 RAN VOR until UNNDAR at or above 1500 FT.  
After UNNDAR, turn left to intercept outbound R-254 RAN VOR, then proceed to FASAI at 5000 FT and hold as directed by ATC.

OCA/H	A	B	C	D	Ground speed	knot	70	90	100	120	140	160	
Straight - in Approach	CAT I	720 (684)				Rate of descent (3.0°)	(ft/min)	372	478	531	637	743	849
Circling (OCH AAL)	Not Authorized												

**NOTE : OCA (OCH): 510 (474) FT can be achieved for all aircraft categories which can commence a missed approach climb gradient of 5.0%(304 FT/NM) until passing UNNDAR.**

CHANGE: GP/DME FREQUENCY AND LOCATION, LOC ID AND LOCATION, TWR FREQUENCY, ATIS FREQUENCY ADDED.