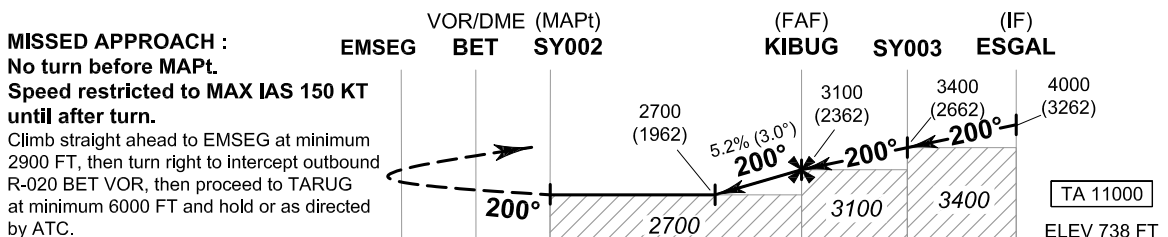
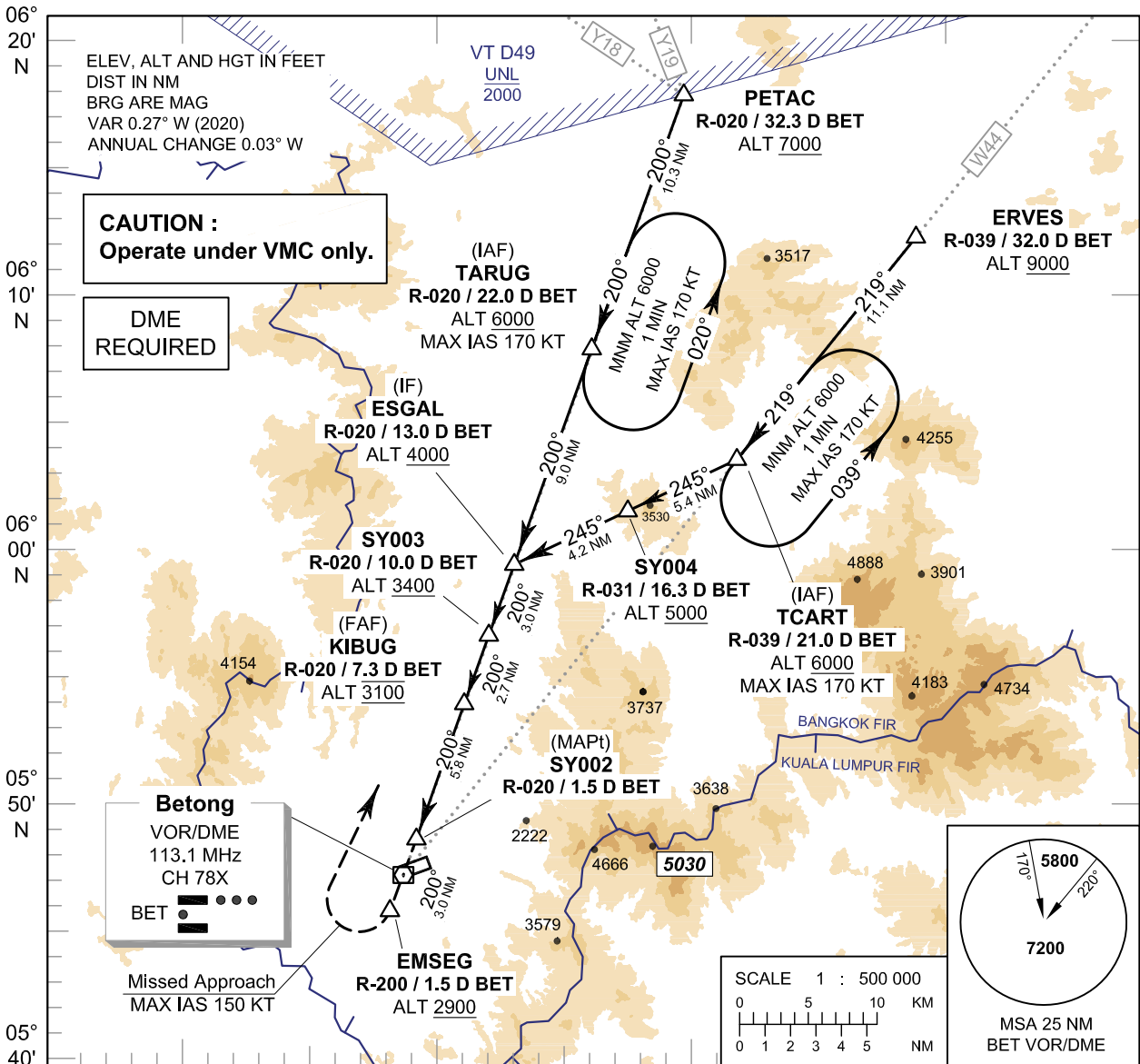


INSTRUMENT APPROACH CHART - ICAO **AERODROME ELEV 738 FT**
HEIGHTS RELATED TO AERODROME ELEV

APP : 125.55
 TWR : 124.15, 236.6
 GND : 122.15
 ATIS : 128.50

YALA / Betong (VTSY)
VOR a



MISSED APPROACH :
 No turn before MAPt.
 Speed restricted to MAX IAS 150 KT until after turn.
 Climb straight ahead to EMSEG at minimum 2900 FT, then turn right to intercept outbound R-020 BET VOR, then proceed to TARUG at minimum 6000 FT and hold or as directed by ATC.

OCA/H	VOR/DME (MAPt)			Distance (BET)	(FAF)			(IF)			
	EMSEG	BET	SY002		KIBUG	SY003	ESGAL				
				6.1 D	7.0 D		FAF				
Straight - in approach	Not authorized			Altitude (Height)	2700 (1962)	3000 (2262)	3100 (2362)				
				Ground speed	knot	70	90	100	120	140	160
Circling (OCH AAL)	2700 (1962)			Rate of descent (5.2%)	ft/min	369	474	527	632	737	843

REMARK : 1. FOR CIRCLING RESTRICTION, SEE VERSO.
 2. TAKE CAUTION TO REMAIN WITHIN BANGKOK FIR WHILE CIRCLING AND MISSED APPROACH DUE TO PROXIMITY OF KUALA LUMPUR FIR.
 3. LANDING DISTANCE AVAILABLE (LDA) IS 1,800 m.

CHANGE: NEW CHART.