

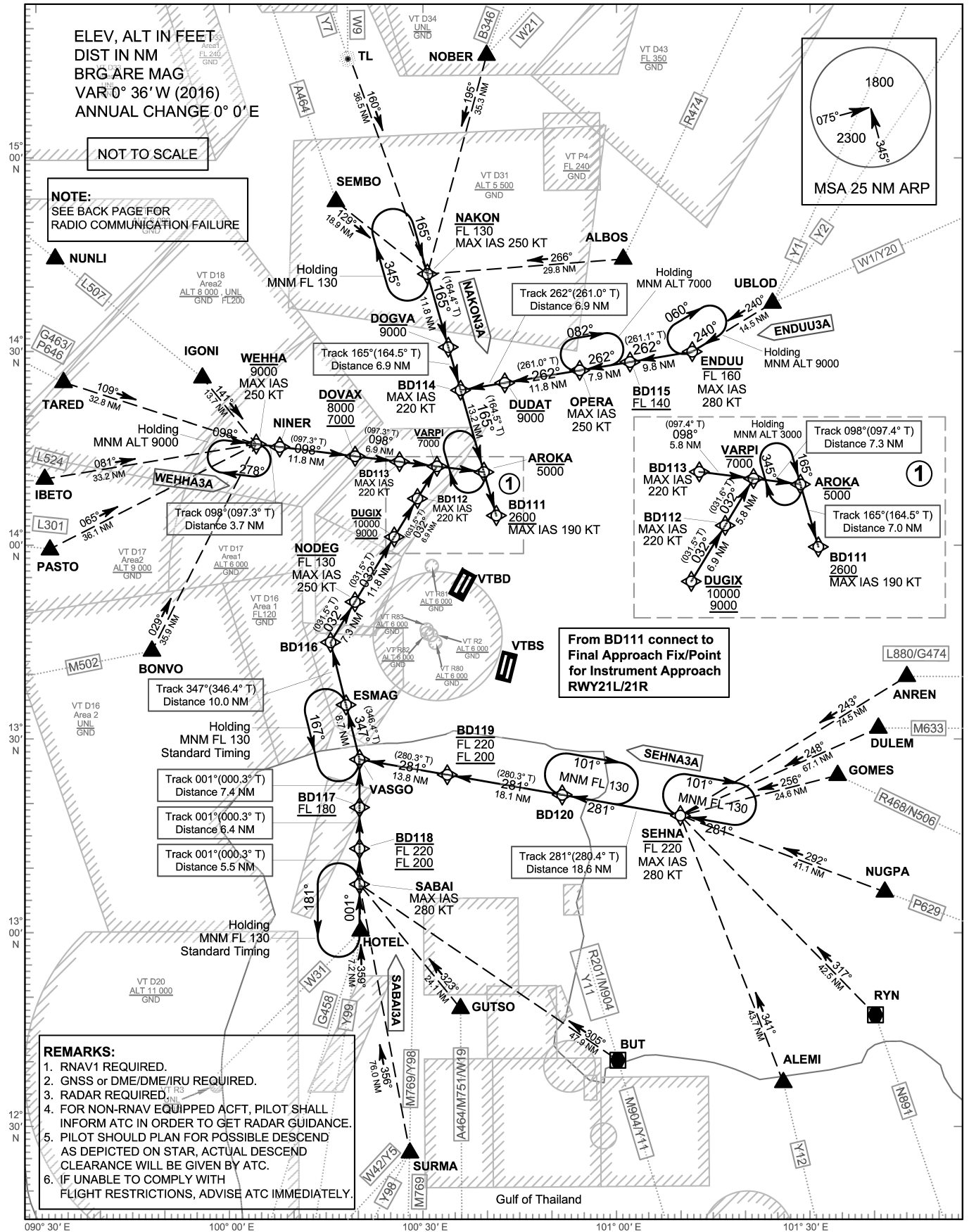
**STANDARD ARRIVAL CHART-
INSTRUMENT (STAR) - ICAO**

| |
|--|
| TRANSITION ALTITUDE 11000 FT |
| SPEED RESTRICTION MAX IAS 250 KT AT OR BELOW ALT 10000 FT UNLESS OTHERWISE AUTHORIZED BY ATC. |

| | |
|--------|-----------------|
| APP : | 119.1, 262.5 |
| | : 119.4, 262.5 |
| | : 120.3, 262.5 |
| | : 128.95, 262.5 |
| | : 122.35, 262.5 |
| | : 124.35, 262.5 |
| | : 125.2, 262.5 |
| DAR : | 133.0, 262.5 |
| TWR : | 118.1, 236.6 |
| ATIS : | 126.4, 344.6 |

**BANGKOK/Don Mueang Intl (VTBD)
RNAV RWY21L/21R**

ENDUU3A NAKON3A
SABAI3A SEHNA3A WEHHA3A



CHANGE: ROUTE Y20 ADDED.