

**STANDARD DEPARTURE CHART -  
INSTRUMENT (SID) - ICAO**

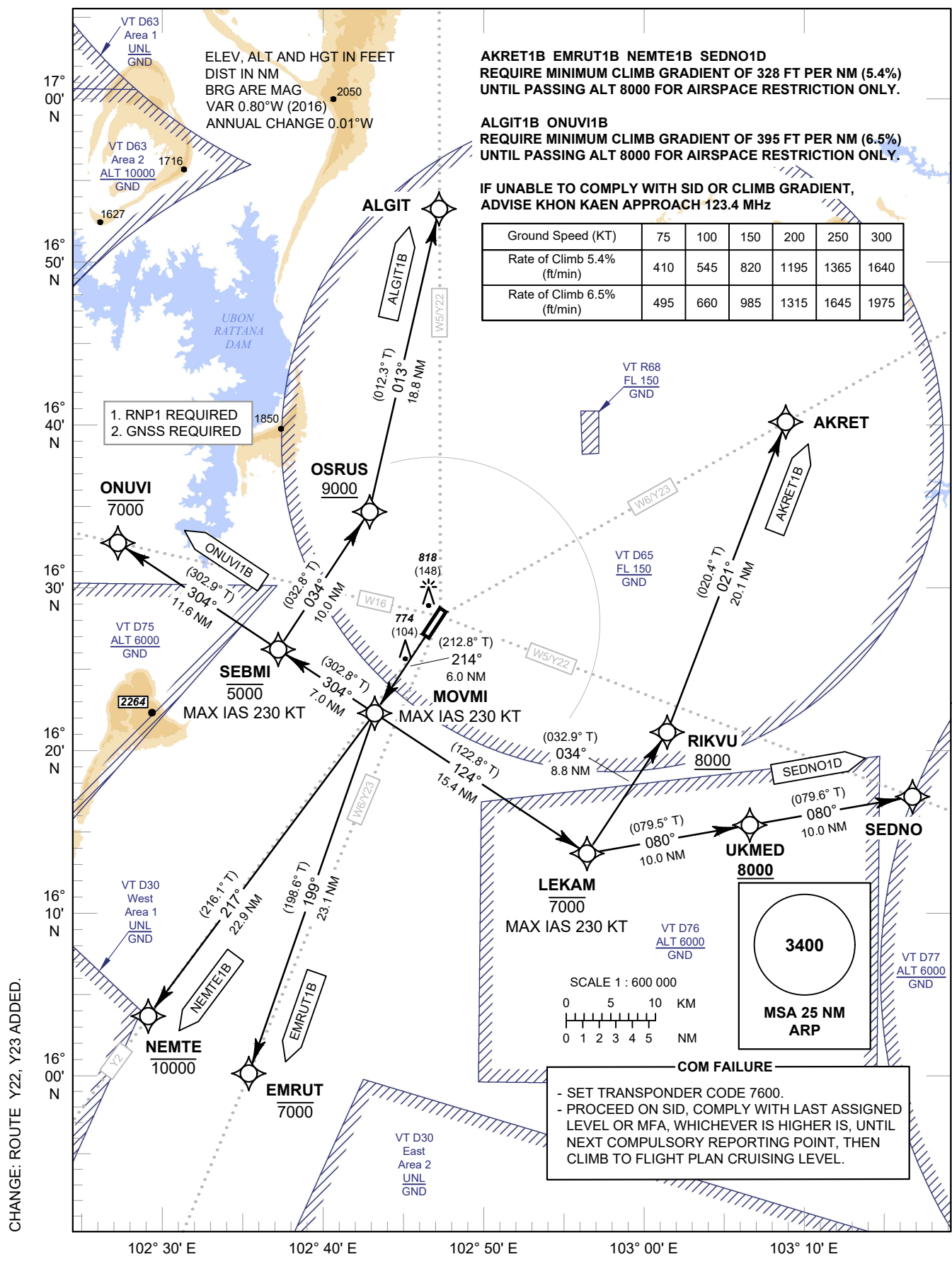
TRANSITION ALTITUDE  
11000 FT

APP : 123.4 , 240.0  
TWR : 122.25 , 236.6  
GND : 121.9  
ATIS : 126.85

**KHON KAEN /  
Khon Kaen (VTUK)**

**RNAV RWY21**

**AKRET1B ALGIT1B EMRUT1B  
NEMTE1B ONUVI1B SEDNO1D**



CHANGE: ROUTE Y22, Y23 ADDED.