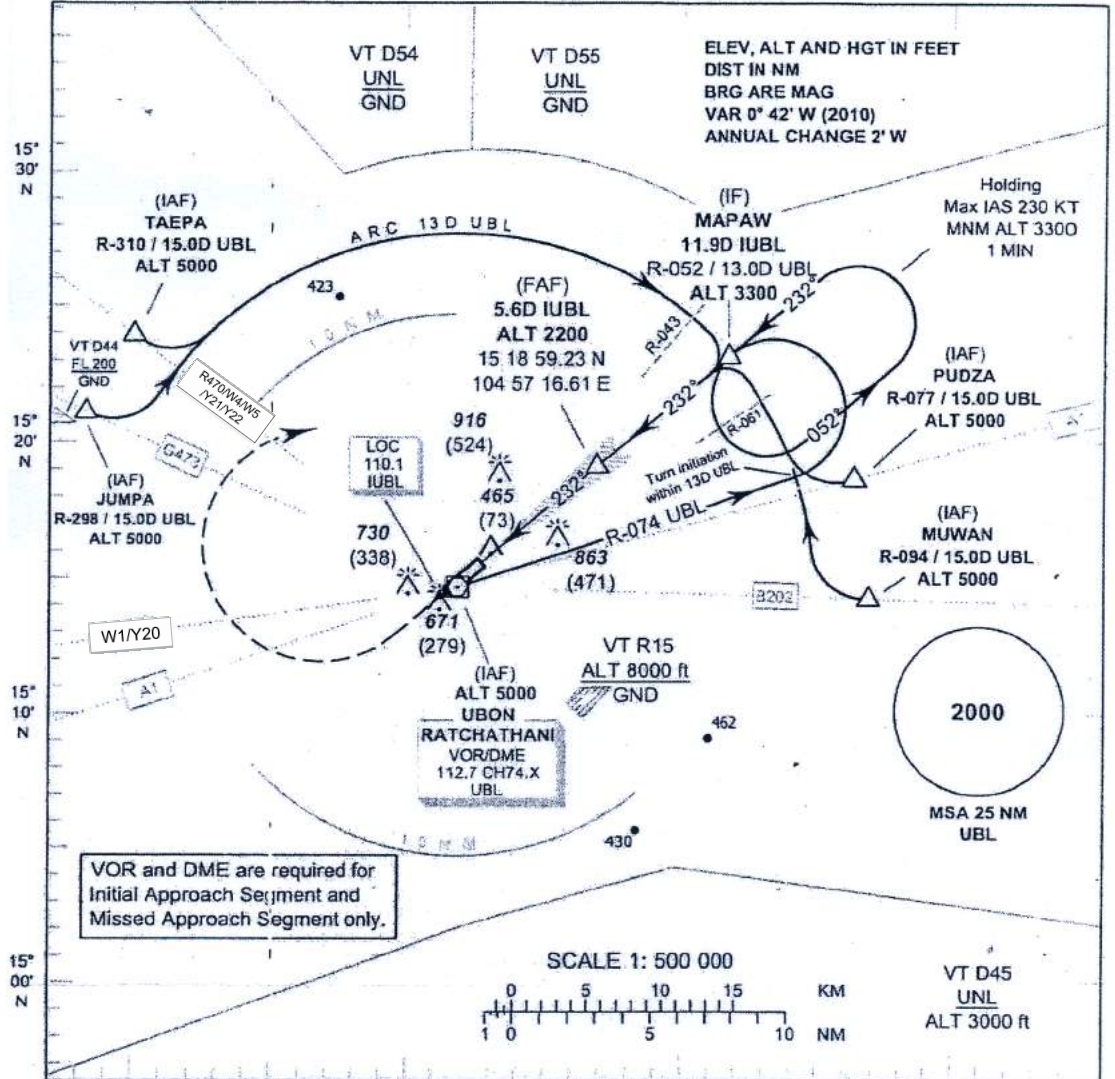


INSTRUMENT APPROACH CHART - ICAO
AERODROME ELEV 406 FT
HEIGHTS RELATED TO THR RWY 23 - ELEV 392 FT

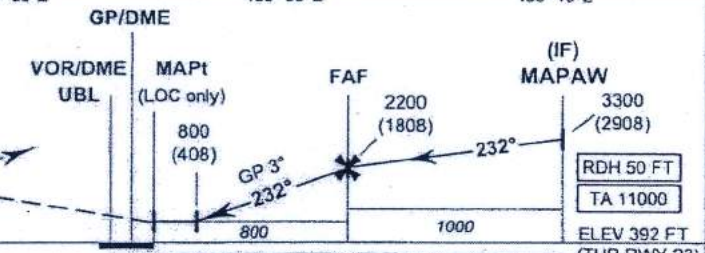
APP : 123.5 , 257.8
 TWR : 119.9 , 274.5
 GND : 121.9 , 275.8

UBON RATCHATHANI /
Ubon Ratchathani (VTUU)
ILS or LOC RWY23



VOR and DME are required for Initial Approach Segment and Missed Approach Segment only.

MISSED APPROACH:
 No turn before MAPt for LOC only.
 Climb straight ahead to 1400 (1008) FT then turn right to intercept R-052 UBL VOR then proceed to IF at 3300 (2908) FT and hold or as directed by ATC.



OCA/H	A	B	C	D	Distance (IUUBL)	1.2 D	2 D	3 D	4 D	5 D	FAF		
Straight-in Approach	CAT I	650 (258)	660 (268)	670 (278)	680 (288)	800 (408)	1040 (648)	1360 (968)	1675 (1283)	1990 (1598)	2200 (1808)		
LOC only		800 (408)				Ground speed (GS)	knot	100	120	140	160	180	200
Circling (OCH AAL)		1350 (944)				Rate of descent	(ft/min)	530	630	740	845	950	1055

CHANGE:ROUTE Y20, Y21, Y22 ADDED.