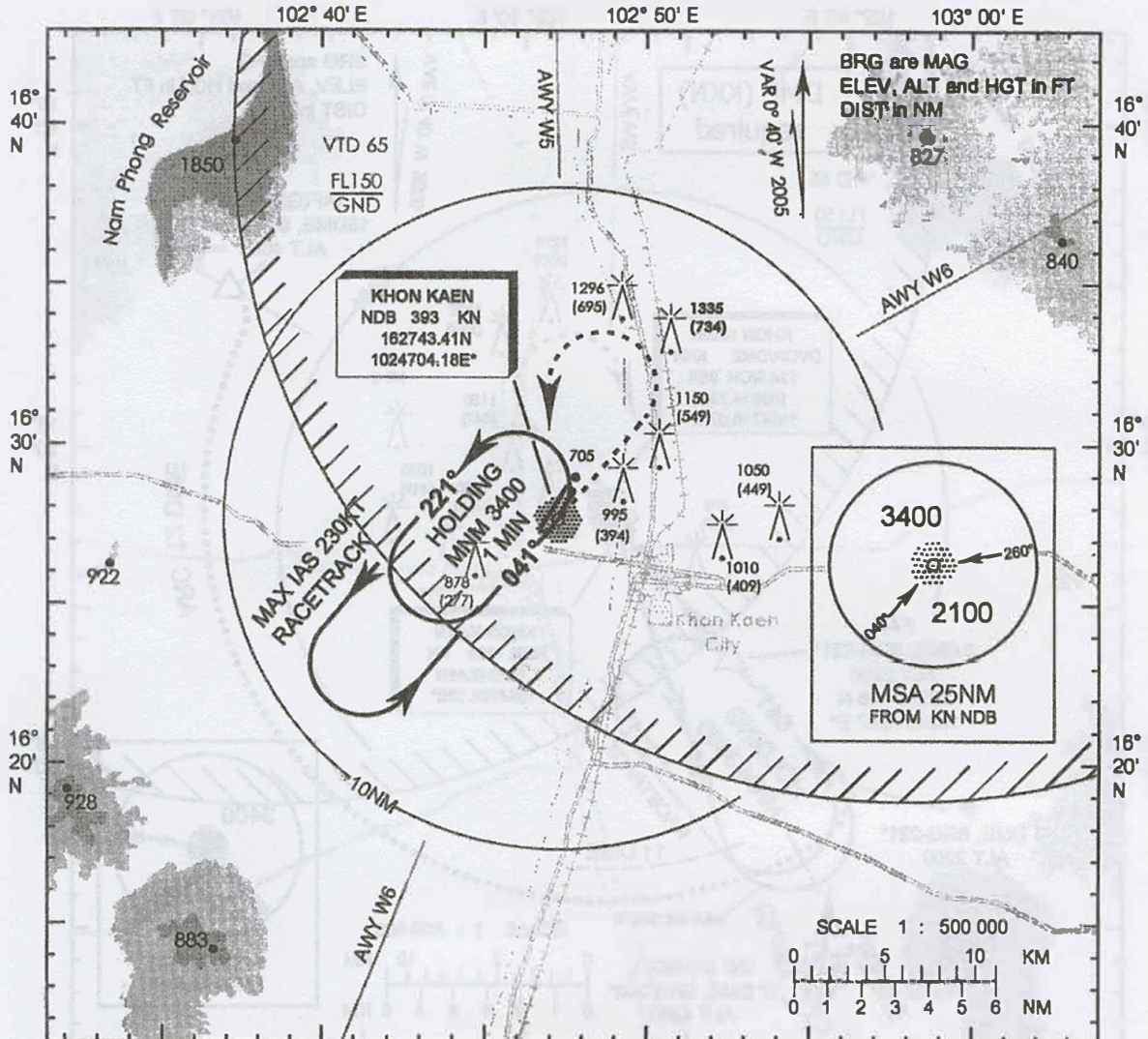


**INSTRUMENT  
APPROACH  
CHART - ICAO**

**AERODROME ELEV 670 FT  
HEIGHTS RELATED TO  
THR RWY 03 - ELEV 601 FT**

APP : 123.4, 240.0  
TWR : 122.25, 236.6  
GND : 121.9  
ATIS : 126.85

**KHON KAEN / Khon Kaen**  
**NDB z**  
**RWY 03**



**TA 11000 FT**



**MISSED APPROACH :**  
Climb straight ahead to  
2000 FT then turn left  
continue climbing to  
3400 FT back to NDB  
and hold or as directed  
by ATC.

CHANGE: CIRCLING ALT.

OCA/H	A	B	C	D
Straight - In Approach		1200 (599)		
Circling		1500 (830)		